

À des fins de recherche uniquement

Anticorps Polyclonal de lapin anti-WWP2



Numéro de catalogue: 12197-1-AP

Phare

13 Publications

Informations de base

Numéro de catalogue:
12197-1-AP

Taille:
150ul, Concentration: 800 µg/ml by
Nanodrop;

Hôte:
Lapin

Isotype:
IgG

Immunogen Catalog Number:
AG2835

Numéro d'acquisition GenBank:
BC013645

Identification du gène (NCBI):
11060

Nom complet:
WW domain containing E3 ubiquitin
protein ligase 2

MW calculé
870 aa, 99 kDa

MW observés:
110-115 kDa

Méthode de purification:
Purification par affinité contre
l'antigène

Dilutions recommandées:
WB 1:500-1:1000
IP 0.5-4.0 ug for IP and 1:500-1:2000
for WB
IHC 1:20-1:200

Applications

Applications testées:
IHC, IP, WB, ELISA

Demandes citées:
CoIP, IF, IHC, IP, WB

Spécificité de l'espèce:
Humain, rat, souris

Espèces citées:
Humain, souris

Contrôles positifs:

WB : tissu hépatique de souris, cellules A549, cellules
HepG2

IP : cellules A549,

IHC : tissu de cancer du pancréas humain,

**Remarque-IHC: il est suggéré de démasquer
l'antigène avec un tampon de TE buffer pH
9,0; (*) À défaut, le démasquage de
l'antigène peut être effectué avec un
tampon citrate pH 6,0.**

Informations générales

WWP2(WW domain-containing protein 2) is also named as AIP2 and belongs to the NEDD4-like protein family. It functions as an E3 ubiquitin ligase for PTEN that plays a vital role in tumour-cell survival and is also involved in regulating transcription, embryonic stem-cell fate, cellular transport and T-cell activation processes(PMID:21532586).WWP2, which specifically interacted with ES cell-specific transcription factor Oct-4 and promoted its ubiquitination both in vitro and in vivo, is a ubiquitously expressed protein and exists in both cytoplasmic and nuclear compartments in ES cells(PMID:15047715).

Publications notables

Autrice	Pubmed ID	Journal	Application
Jing Yan	36211818	Oxid Med Cell Longev	WB
Xinxin Lu	36257929	Cell Death Discov	WB,IF,IP
Mao-Xu Ge	31621893	Br J Pharmacol	WB

Stockage

Stockage:

Stocker à -20°C. Stable pendant un an après l'expédition.

Tampon de stockage:

PBS avec azoture de sodium à 0,02 % et glycérol à 50 % pH 7,3

L'aliquotage n'est pas nécessaire pour le stockage à -20C

*** Les 20ul contiennent 0,1% de BSA.

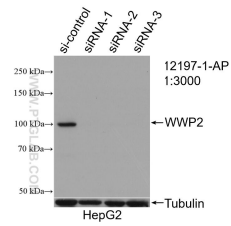
For technical support and original validation data for this product please contact:

T: 1 (888) 4PTGLAB (1-888-478-4522) (toll free
in USA), or 1(312) 455-8498 (outside USA)

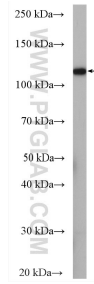
E: proteintech@ptglab.com
W: ptglab.com

This product is exclusively available under Proteintech Group brand and is not available to purchase from any other manufacturer.

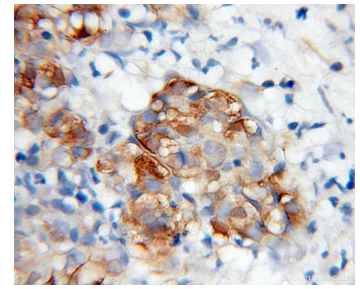
Données de validation sélectionnées



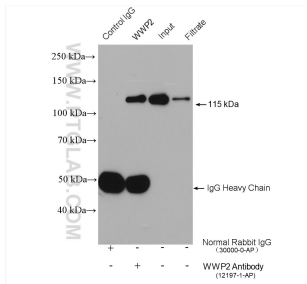
WB result of WWP2 antibody (12197-1-AP; 1:3000; incubated at room temperature for 1.5 hours) with sh-Control and sh-WWP2 transfected HepG2 cells.



mouse liver tissue were subjected to SDS PAGE followed by western blot with 12197-1-AP (WWP2 antibody) at dilution of 1:500 incubated at room temperature for 1.5 hours.



Immunohistochemical analysis of paraffin-embedded human pancreas cancer using 12197-1-AP (WWP2 antibody) at dilution of 1:100 (under 40x lens).



IP result of anti-WWP2 (IP:12197-1-AP, 4 μ g; Detection:12197-1-AP 1:1000) with A549 cells lysate 800 μ g.