

À des fins de recherche uniquement

Anticorps Polyclonal de lapin anti-USP25



Numéro de catalogue: 12199-1-AP

Phare

4 Publications

Informations de base

Numéro de catalogue:
12199-1-AP

Taille:
150ul, Concentration: 400 µg/ml by Nanodrop and 173 µg/ml by Bradford method using BSA as the standard;

Hôte:
Lapin

Isotype:
IgG

Immunogen Catalog Number:
AG2837

Numéro d'acquisition GenBank:
BC015930

Identification du gène (NCBI):
29761

Nom complet:
ubiquitin specific peptidase 25

MW calculé
125 kDa

MW observés:
125 kDa

Méthode de purification:
Purification par affinité contre l'antigène

Dilutions recommandées:
WB 1:500-1:2000
IP 0.5-4.0 ug for IP and 1:200-1:1000 for WB
IHC 1:200-1:800

Applications

Applications testées:
IHC, IP, WB, ELISA

Demandes citées:
IHC, WB

Spécificité de l'espèce:
Humain, souris

Espèces citées:
Humain, souris

Remarque-IHC: il est suggéré de démasquer l'antigène avec un tampon de TE buffer pH 9.0; (*) A défaut, le démasquage de l'antigène peut être effectué avec un tampon citrate pH 6,0.

Contrôles positifs:

WB : cellules BxPC-3, cellules K-562, tissu de cervelet de souris

IP : cellules RAW 264.7,

IHC : tissu de cancer du poumon humain,

Informations générales

Ubiquitin carboxyl-terminal hydrolase 25, encoded by USP25 gene, has three isoforms by alternative splicing. Isoform USP25a is found in most adult and fetal tissues; Isoform USP25b is found in all tissues except heart and skeletal muscle. Isoform USP25m is heart and skeletal muscle specific, and is upregulated during myogenesis, therefore, may have a role in the regulation of muscular differentiation and function. USP25, as deubiquitinating enzyme that hydrolyzes ubiquitin moieties conjugated to substrates, functions to process newly synthesized Ubiquitin, to recycle ubiquitin molecules or to edit polyubiquitin chains and prevents proteasomal degradation of substrates.

Publications notables

Autrice	Pubmed ID	Journal	Application
Ying Ren	36442624	Biochem Pharmacol	WB
Shuoyi Jiang	33963175	Cell Death Dis	WB
Xiaofei Zhang	28190767	Mol Cell	WB

Stockage

Stockage:

Stocker à -20°C. Stable pendant un an après l'expédition.

Tampon de stockage:

PBS avec azoture de sodium à 0,02 % et glycérol à 50 % pH 7,3

L'aliquoteage n'est pas nécessaire pour le stockage à -20C

*** Les 20ul contiennent 0,1% de BSA.

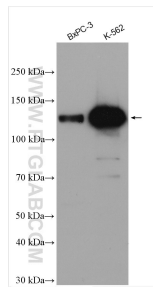
For technical support and original validation data for this product please contact:

T: 1 (888) 4PTGLAB (1-888-478-4522) (toll free in USA), or 1(312) 455-8498 (outside USA)

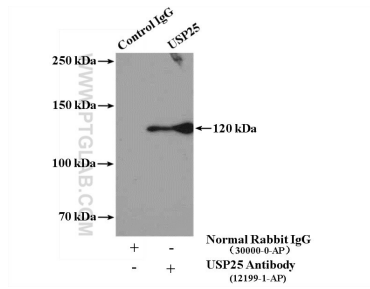
E: proteintech@ptglab.com
W: ptglab.com

This product is exclusively available under Proteintech Group brand and is not available to purchase from any other manufacturer.

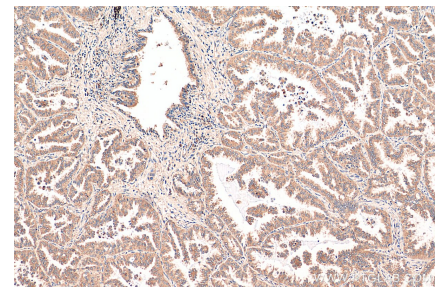
Données de validation sélectionnées



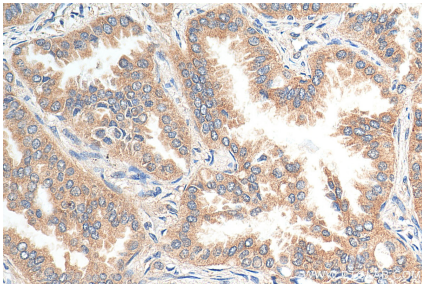
Various lysates were subjected to SDS PAGE followed by western blot with 12199-1-AP (USP25 antibody) at dilution of 1:1000 incubated at room temperature for 1.5 hours.



IP Result of anti-USP25 (IP:12199-1-AP, 4ug; Detection:12199-1-AP 1:300) with RAW 264.7 cells lysate 1600ug.



Immunohistochemical analysis of paraffin-embedded human lung cancer tissue slide using 12199-1-AP (USP25 antibody) at dilution of 1:400 (under 10x lens). Heat mediated antigen retrieval with Tris-EDTA buffer (pH 9.0).



Immunohistochemical analysis of paraffin-embedded human lung cancer tissue slide using 12199-1-AP (USP25 antibody) at dilution of 1:400 (under 40x lens). Heat mediated antigen retrieval with Tris-EDTA buffer (pH 9.0).