

À des fins de recherche uniquement

Anticorps Polyclonal de lapin anti-ABHD5



Numéro de catalogue: 12201-1-AP

Phare

24 Publications

Informations de base

Numéro de catalogue:

12201-1-AP

Taille:

150ul, Concentration: 600 µg/ml by Nanodrop;

Hôte:

Lapin

Isotype:

IgG

Immunogen Catalog Number:

AG2840

Numéro d'acquisition GenBank:

BC021958

Identification du gène (NCBI):

51099

Nom complet:

abhydrolase domain containing 5

MW calculé

349 aa, 39 kDa

MW observés:

39 kDa

Méthode de purification:

Purification par affinité contre l'antigène

Dilutions recommandées:

WB 1:1000-1:6000

IP 0.5-4.0 ug for IP and 1:500-1:1000 for WB

IHC 1:20-1:200

IF 1:10-1:100

Applications

Applications testées:

IF, IHC, IP, WB, ELISA

Demandes citées:

CoIP, IF, IP, WB

Spécificité de l'espèce:

Humain, souris

Espèces citées:

Humain, porc, souris

Contrôles positifs:

WB : cellules A431, cellules A549, cellules HCT 116, cellules HeLa, cellules HepG2, cellules LNCaP, cellules NIH/3T3

IP : cellules Jurkat,

IHC : tissu de muscle squelettique humain, tissu hépatique humain

IF : cellules MCF-7,

Remarque-IHC: il est suggéré de démasquer l'antigène avec un tampon de TE buffer pH 9.0; (*) À défaut, le démasquage de l'antigène peut être effectué avec un tampon citrate pH 6.0.

Informations générales

ABHD5, also named as NCIE2 and CGI-58, belongs to the peptidase S33 family. ABHD4/ABHD5 subfamily. It is a Lysophosphatidic acid acyltransferase which functions in phosphatidic acid biosynthesis. ABHD5 may regulate the cellular storage of triacylglycerol through activation of the phospholipase PNPLA2. It is involved in keratinocyte differentiation. ABHD5 is an evolutionarily conserved protein that acts as a potent activator of Atp1. Abhd5 is expressed in several tissues that lack Plin, raising the possibility that this co-activator might interact with additional PAT proteins. Abhd5 and Mldp are highly colocalized on individual lipid droplets. (PMID:19064991) Defects in ABHD5 are the cause of Chanarin-Dorfman syndrome (CDS).

Publications notables

Autrice	Pubmed ID	Journal	Application
Ximing Du	31653673	J Cell Biol	WB
Xiaodong Zhang	25315694	Am J Physiol Endocrinol Metab	WB
Guohua Chen	33460940	J Biol Chem	WB

Stockage

Stockage:

Stocker à -20°C. Stable pendant un an après l'expédition.

Tampon de stockage:

PBS avec azoture de sodium à 0,02 % et glycérol à 50 % pH 7,3

L'aliquotage n'est pas nécessaire pour le stockage à -20C

*** Les 20ul contiennent 0,1% de BSA.

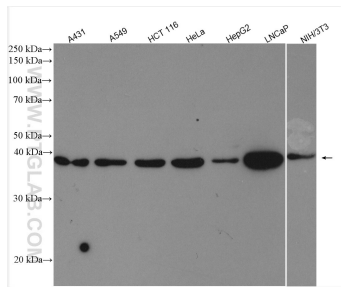
For technical support and original validation data for this product please contact:

T: 1 (888) 4PTGLAB (1-888-478-4522) (toll free in USA), or 1(312) 455-8498 (outside USA)

E: proteintech@ptglab.com
W: ptglab.com

This product is exclusively available under Proteintech Group brand and is not available to purchase from any other manufacturer.

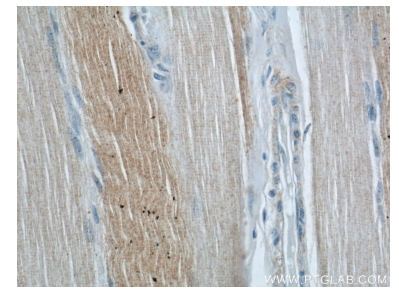
Données de validation sélectionnées



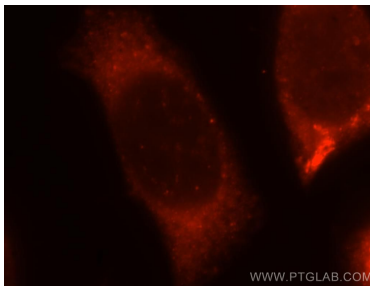
Various lysates were subjected to SDS PAGE followed by western blot with 12201-1-AP (ABHD5 antibody) at dilution of 1:3000 incubated at room temperature for 1.5 hours.



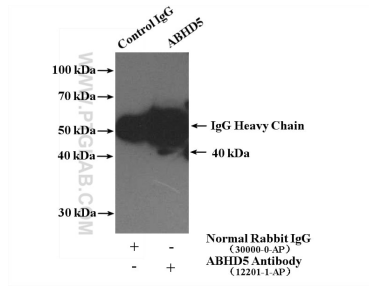
Immunohistochemical analysis of paraffin-embedded human skeletal muscle using 12201-1-AP (ABHD5 antibody) at dilution of 1:50 (under 10x lens).



Immunohistochemical analysis of paraffin-embedded human skeletal muscle using 12201-1-AP (ABHD5 antibody) at dilution of 1:50 (under 40x lens).



Immunofluorescent analysis of MCF-7 cells, using ABHD5 antibody 12201-1-AP at 1:25 dilution and Rhodamine-labeled goat anti-rabbit IgG (red).



IP Result of anti-ABHD5 (IP:12201-1-AP, 4ug; Detection:12201-1-AP 1:500) with Jurkat cells lysate 4000ug.