

À des fins de recherche uniquement

Anticorps Polyclonal de lapin anti-MATR3



Numéro de catalogue: 12202-2-AP

9 Publications

Informations de base

Numéro de catalogue:
12202-2-AP

Taille:
150ul, Concentration: 350 µg/ml by Nanodrop and 333 µg/ml by Bradford method using BSA as the standard;

Hôte:
Lapin

Isotype:
IgG

Immunogen Catalog Number:
AG2843

Numéro d'acquisition GenBank:
BC015031

Identification du gène (NCBI):
9782

Nom complet:
matrin 3

MW calculé
847 aa, 95 kDa

MW observés:
125 kDa

Méthode de purification:
Purification par affinité contre l'antigène

Dilutions recommandées:
WB 1:500-1:2000
IHC 1:250-1:1000
IF 1:10-1:100

Applications

Applications testées:
IF, IHC, WB, ELISA

Demandes citées:
IF, IP, WB

Spécificité de l'espèce:
Humain, rat, souris

Espèces citées:
Humain, souris

Remarque-IHC: il est suggéré de démasquer l'antigène avec un tampon de TE buffer pH 9,0; (*) À défaut, 'le démasquage de l'antigène peut être 'effectué avec un tampon citrate pH 6,0.

Contrôles positifs:

WB : cellules MCF-7,

IHC : tissu de cancer du poumon humain, tissu testiculaire de souris

IF : cellules HepG2, cellules HEK-293

Informations générales

MATR3, known as KIAA0723, is a 847 amino acid protein, which may play a role in transcription or may interact with other nuclear matrix proteins to form the internal fibrogranular network. MATR3 was originally identified as a nuclear matrix protein containing both DNA and RNA binding domains (PMID: 2033075) with a wide variety of functions ranging from DNA damage response to transcriptional and post-transcriptional regulation of cellular and viral RNAs (PMID: 21771346). the calculated molecular weight of MATR3 is 94 kDa, but we detect a 125 kDa protein as result from PMID: 28977530.

Publications notables

Autrice	Pubmed ID	Journal	Application
Haiyan An	31636118	J Cell Biol	WB
Hiroaki Suzuki	31582731	Cell Death Dis	WB
Zewei Sun	36368640	Clin Immunol	WB,IF,IP

Stockage

Stockage:

Stocker à -20°C. Stable pendant un an après l'expédition.

Tampon de stockage:

PBS avec azoture de sodium à 0,02 % et glycérol à 50 % pH 7,3

L'aliquotage n'est pas nécessaire pour le stockage à -20C

*** Les 20ul contiennent 0,1% de BSA.

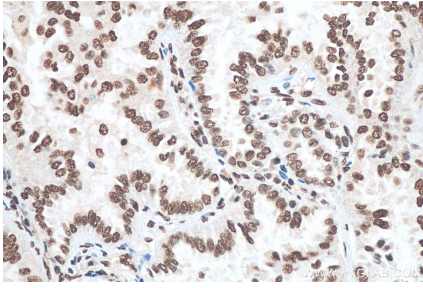
For technical support and original validation data for this product please contact:

T: 1 (888) 4PTGLAB (1-888-478-4522) (toll free in USA), or 1(312) 455-8498 (outside USA)

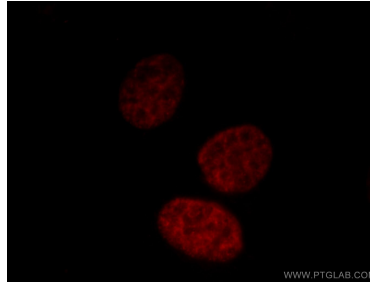
E: proteintech@ptglab.com
W: ptglab.com

This product is exclusively available under Proteintech Group brand and is not available to purchase from any other manufacturer.

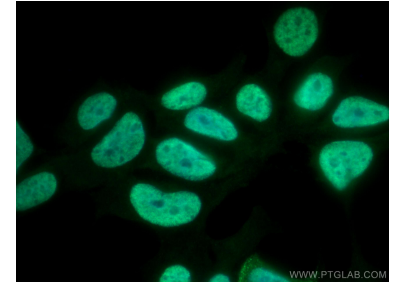
Données de validation sélectionnées



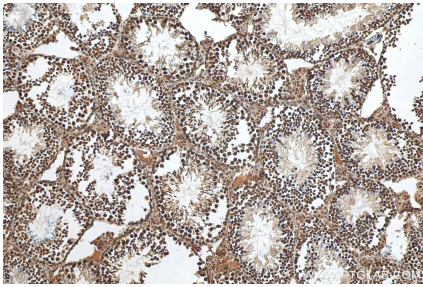
Immunohistochemical analysis of paraffin-embedded human lung cancer tissue slide using 12202-2-AP (MATR3 antibody) at dilution of 1:500 (under 40x lens). Heat mediated antigen retrieval with Tris-EDTA buffer (pH 9.0).



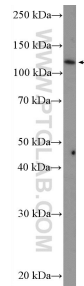
Immunofluorescent analysis of () fixed HepG2 cells using 12202-2-AP (MATR3 antibody) at dilution of 1:25.



Immunofluorescent analysis of (4% PFA) fixed HEK-293 cells using MATR3 antibody (12202-2-AP) at dilution of 1:400 and CoraLite®488-Conjugated AffiniPure Goat Anti-Rabbit IgG(H+L).



Immunohistochemical analysis of paraffin-embedded mouse testis tissue slide using 12202-2-AP (MATR3 antibody) at dilution of 1:500 (under 10x lens). Heat mediated antigen retrieval with Tris-EDTA buffer (pH 9.0).



MCF-7 cells were subjected to SDS PAGE followed by western blot with 12202-2-AP (MATR3 Antibody) at dilution of 1:1000 incubated at room temperature for 1.5 hours.