

À des fins de recherche uniquement

Anticorps Polyclonal de lapin anti-Syntaxin 8



Numéro de catalogue: 12206-1-AP

2 Publications

Informations de base

Numéro de catalogue:
12206-1-AP

Taille:
150ul, Concentration: 550 µg/ml by Nanodrop and 320 µg/ml by Bradford method using BSA as the standard;

Hôte:
Lapin

Isotype:
IgG

Immunogen Catalog Number:
AG2850

Numéro d'acquisition GenBank:
BC009713

Identification du gène (NCBI):
9482

Nom complet:
syntaxin 8

MW calculé
236 aa, 27 kDa

MW observés:
27 kDa

Méthode de purification:
Purification par affinité contre l'antigène

Dilutions recommandées:
WB 1:500-1:1000
IP 0.5-4.0 ug for IP and 1:500-1:1000 for WB
IF 1:10-1:100

Applications

Applications testées:
FC, IF, IP, WB, ELISA

Demandes citées:
ColP, WB

Spécificité de l'espèce:
Humain, rat, souris

Espèces citées:
rat, souris

Contrôles positifs:

WB : tissu cardiaque humain, cellules A375, tissu cérébral humain, tissu hépatique humain, tissu pancréatique de souris, tissu placentaire humain, tissu pulmonaire humain, tissu rénal humain

IP : cellules A375,

IF : cellules HepG2,

Informations générales

Syntaxin 8 (STX8), also known as CIP-1-associated regulator of cyclin B (CARB), is a protein belongs to the syntaxin family. The gene of STX8 maps to chromosomal band 17p12 and it encodes a 236-amino-acid protein containing 1 t-SNARE coiled-coil homology domain. STX8 mRNA is broadly expressed in multiple human tissues, including heart, brain, kidney, liver, lung, placenta, skeletal muscle, spleen and pancreas (PMID: 10198254). STX8 is involved in protein trafficking from early to late endosomes via vesicle fusion and exocytosis.

Publications notables

Autrice	Pubmed ID	Journal	Application
Mona Abed	30951545	PLoS One	
Min Li	36053215	J Cell Biol	WB, ColP

Stockage

Stockage:

Stocker à -20°C. Stable pendant un an après l'expédition.

Tampon de stockage:

PBS avec azoture de sodium à 0,02 % et glycérol à 50 % pH 7,3

L'aliquotage n'est pas nécessaire pour le stockage à -20C

*** Les 20ul contiennent 0,1% de BSA.

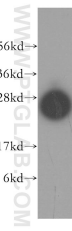
For technical support and original validation data for this product please contact:

T: 1 (888) 4PTGLAB (1-888-478-4522) (toll free in USA), or 1(312) 455-8498 (outside USA)

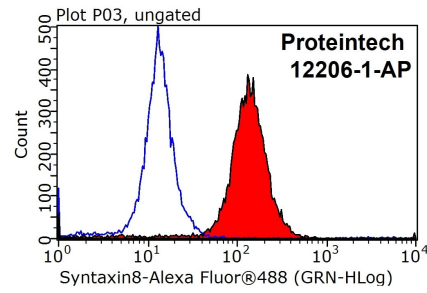
E: proteintech@ptglab.com
W: ptglab.com

This product is exclusively available under Proteintech Group brand and is not available to purchase from any other manufacturer.

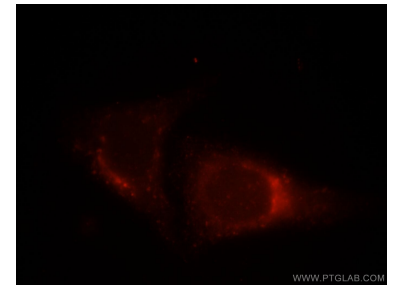
Données de validation sélectionnées



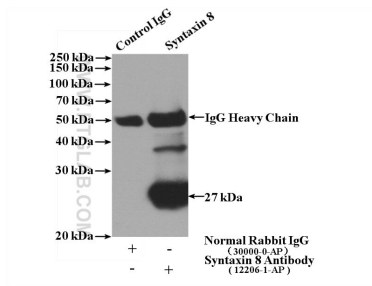
human heart tissue were subjected to SDS PAGE followed by western blot with 12206-1-AP (Syntaxin 8 antibody) at dilution of 1:500 incubated at room temperature for 1.5 hours.



1X10⁶ HepG2 cells were stained with 0.2ug Syntaxin 8 antibody (12206-1-AP, red) and control antibody (blue). Fixed with 90% MeOH blocked with 3% BSA (30 min). Alexa Fluor 488-conjugated AffiniPure Goat Anti-Rabbit IgG(H+L) with dilution 1:1000.



Immunofluorescent analysis of HepG2 cells, using STX8 antibody 12206-1-AP at 1:25 dilution and Rhodamine-labeled goat anti-rabbit IgG (red).



IP Result of anti-Syntaxin 8 (IP:12206-1-AP, 4ug; Detection:12206-1-AP 1:500) with A375 cells lysate 3600ug.