

À des fins de recherche uniquement

# Anticorps Polyclonal de lapin anti-SSBP1



Numéro de catalogue: 12212-1-AP

Phare

23 Publications

## Informations de base

<b>Numéro de catalogue:</b> 12212-1-AP	<b>Numéro d'acquisition GenBank:</b> BC000895	<b>Méthode de purification:</b> Purification par affinité contre l'antigène
<b>Taille:</b> 150ul, Concentration: 800 µg/ml by Nanodrop and 267 µg/ml by Bradford method using BSA as the standard;	<b>Identification du gène (NCBI):</b> 6742	<b>Dilutions recommandées:</b> WB 1:500-1:1000 IF 1:50-1:500
<b>Hôte:</b> Lapin	<b>Nom complet:</b> single-stranded DNA binding protein 1	
<b>Isotype:</b> IgG	<b>MW calculé:</b> 148 aa, 17 kDa	
<b>Immunogen Catalog Number:</b> AG2860	<b>MW observés:</b> 17 kDa	

## Applications

### Applications testées:

IF, WB, ELISA

### Demandes citées:

ChIP, IF, IHC, WB

### Spécificité de l'espèce:

Humain, rat, souris

### Espèces citées:

Humain, souris

### Contrôles positifs:

WB : cellules A549, cellules A375, cellules Caco-2, tissu pancréatique de rat, tissu pancréatique de souris

IF : cellules A375,

## Informations générales

SSBP1 is a housekeeping gene involved in mitochondrial biogenesis. It binds preferentially and cooperatively to ss-DNA in the maintenance of genome stability. SSBP1 acted as a homotetramer to stabilize the displaced single strand of the normal and expanded displacement loop (D loop) during mtDNA replication, thus preventing formation of secondary single-stranded DNA structures, which could stop the gamma-DNA polymerase

## Publications notables

Autrice	Pubmed ID	Journal	Application
Timo Rey	32989247	Nat Cell Biol	WB
Margaret A Gustafson	31479473	PLoS One	WB
Aindrija Chatterjee	27768893	Cell	WB

## Stockage

### Stockage:

Stocker à -20°C. Stable pendant un an après l'expédition.

### Tampon de stockage:

PBS avec azote de sodium à 0,02 % et glycérol à 50 % pH 7,3

L'aliquotage n'est pas nécessaire pour le stockage à -20C

\*\*\* Les 20ul contiennent 0,1% de BSA.

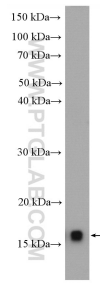
For technical support and original validation data for this product please contact:

T: 1 (888) 4PTGLAB (1-888-478-4522) (toll free in USA), or 1(312) 455-8498 (outside USA)

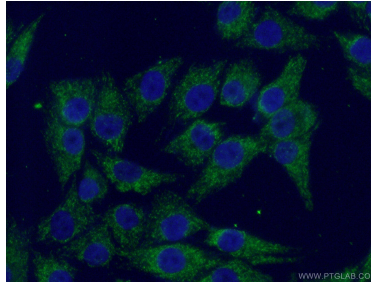
E: [proteintech@ptglab.com](mailto:proteintech@ptglab.com)  
W: [ptglab.com](http://ptglab.com)

This product is exclusively available under Proteintech Group brand and is not available to purchase from any other manufacturer.

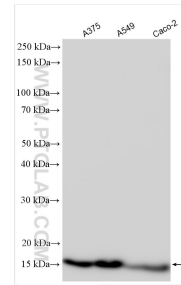
## Données de validation sélectionnées



A549 cells were subjected to SDS PAGE followed by western blot with 12212-1-AP (SSBP1 antibody) at dilution of 1:600 incubated at 4 degree celsius over night.



Immunofluorescent analysis of (4% PFA) fixed A375 cells using 12212-1-AP (SSBP1 antibody) at dilution of 1:50 and Alexa Fluor 488-conjugated AffiniPure Goat Anti-Rabbit IgG(H+L).



Various lysates were subjected to SDS PAGE followed by western blot with 12212-1-AP (SSBP1 antibody) at dilution of 1:4000 incubated at room temperature for 1.5 hours.