

À des fins de recherche uniquement

# Anticorps Polyclonal de lapin anti-CREG1



Numéro de catalogue: 12220-1-AP

6 Publications

## Informations de base

<b>Numéro de catalogue:</b> 12220-1-AP	<b>Numéro d'acquisition GenBank:</b> BC008628	<b>Méthode de purification:</b> Purification par affinité contre l'antigène
<b>Taille:</b> 150ul, Concentration: 700 µg/ml by Nanodrop and 233 µg/ml by Bradford method using BSA as the standard;	<b>Identification du gène (NCBI):</b> 8804	<b>Dilutions recommandées:</b> WB 1:500-1:1000
<b>Hôte:</b> Lapin	<b>Nom complet:</b> cellular repressor of E1A-stimulated genes 1	
<b>Isotype:</b> IgG	<b>MW calculé:</b> 220 aa, 24 kDa	
<b>Immunogen Catalog Number:</b> AG2901	<b>MW observés:</b> 32 kDa	

## Applications

<b>Applications testées:</b> WB, ELISA	<b>Contrôles positifs:</b> WB : cellules Jurkat, cellules K-562, tissu splénique de souris
<b>Demandes citées:</b> IHC, WB	
<b>Spécificité de l'espèce:</b> Humain, rat, souris	
<b>Espèces citées:</b> Humain, rat, souris	

## Informations générales

REG1 (Cellular repressor of E1A-stimulated genes 1) shares limited sequence similarity with E1A and binds both the general transcription factor TBP and the tumor suppressor pRb in vitro (PMID:9710587). The monomers of CREG can associate into dimers and the dimerization is observed not only in the crystal but also in solution (PMID:16344469). The cellular repressor of E1A-stimulated genes (CREG) is a secreted glycoprotein that inhibits cell proliferation and/or enhances differentiation. CREG is widely expressed in adult tissues such as the brain, heart, lungs, liver, intestines and kidneys in mice (PMID:20857207).

## Publications notables

Autrice	Pubmed ID	Journal	Application
Tatsuya Kusudo	34647124	J Biochem	WB, IHC
Yong Zhang	34734480	J Cell Mol Med	WB
Michihiro Hashimoto	30917000	FASEB J	

## Stockage

**Stockage:**  
Stocker à -20°C. Stable pendant un an après l'expédition.  
**Tampon de stockage:**  
PBS avec azoture de sodium à 0,02 % et glycérol à 50 % pH 7,3  
L'aliquotage n'est pas nécessaire pour le stockage à -20C

\*\*\* Les 20ul contiennent 0,1% de BSA.

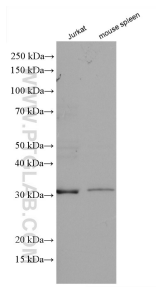
For technical support and original validation data for this product please contact:

T: 1 (888) 4PTGLAB (1-888-478-4522) (toll free in USA), or 1(312) 455-8498 (outside USA)

E: [proteintech@ptglab.com](mailto:proteintech@ptglab.com)  
W: [ptglab.com](http://ptglab.com)

This product is exclusively available under Proteintech Group brand and is not available to purchase from any other manufacturer.

## Données de validation sélectionnées



Various lysates were subjected to SDS PAGE followed by western blot with 12220-1-AP (CREG1 antibody) at dilution of 1:600 incubated at room temperature for 1.5 hours.