

À des fins de recherche uniquement

Anticorps Polyclonal de lapin anti-SH2B1



Numéro de catalogue: 12226-1-AP

1 Publications

Informations de base

Numéro de catalogue:
12226-1-AP

Taille:
150ul, Concentration: 400 µg/ml by Nanodrop and 287 µg/ml by Bradford method using BSA as the standard;

Hôte:
Lapin

Isotype:
IgG

Immunogen Catalog Number:
AG2863

Numéro d'acquisition GenBank:
BC010704

Identification du gène (NCBI):
25970

Nom complet:
SH2B adaptor protein 1

MW calculé
426 aa, 45 kDa

MW observés:
80 kDa

Méthode de purification:
Purification par affinité contre l'antigène

Dilutions recommandées:
WB 1:500-1:1000
IP 0.5-4.0 ug for IP and 1:500-1:1000 for WB
IHC 1:20-1:200
IF 1:20-1:200

Applications

Applications testées:
IF, IHC, IP, WB, ELISA

Demandes citées:
CoIP, IF, IHC, WB

Spécificité de l'espèce:
Humain

Espèces citées:
Humain, souris

Remarque-IHC: il est suggéré de démasquer l'antigène avec un tampon de TE buffer pH 9,0; (*) A défaut, le démasquage de l'antigène peut être effectué avec un tampon citrate pH 6,0.

Contrôles positifs:

WB : cellules HEK-293,

IP : cellules HEK-293,

IHC : tissu ovarien humain, tissu de muscle squelettique humain

IF : cellules HeLa,

Informations générales

SH2B1 is a member of the SH2-domain containing mediators family. SH2B1 has been shown to interact with INS receptor, Grb2, TrkA and Janus kinase 2. Variations close to or in the SH2B1 gene have been found to associate with obesity in two large genome wide association studies of body mass index (PMID: 19079260). SH2B1 deletions are associated with severe early-onset obesity (PMID: 19966786).

Publications notables

Autrice	Pubmed ID	Journal	Application
Xiaojuan Han	35390677	Redox Biol	WB, IHC, IF, CoIP

Stockage

Stockage:

Stocker à -20°C. Stable pendant un an après l'expédition.

Tampon de stockage:

PBS avec azote de sodium à 0,02 % et glycérol à 50 % pH 7,3

L'aliquotage n'est pas nécessaire pour le stockage à -20C

*** Les 20ul contiennent 0,1% de BSA.

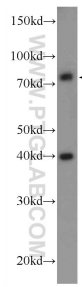
For technical support and original validation data for this product please contact:

T: 1 (888) 4PTGLAB (1-888-478-4522) (toll free in USA), or 1(312) 455-8498 (outside USA)

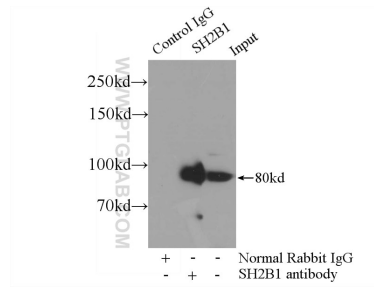
E: proteintech@ptglab.com
W: ptglab.com

This product is exclusively available under Proteintech Group brand and is not available to purchase from any other manufacturer.

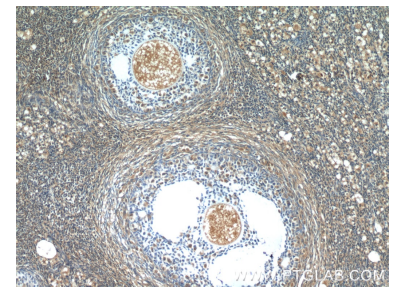
Données de validation sélectionnées



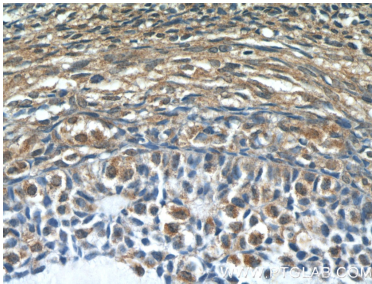
HEK-293 cells were subjected to SDS PAGE followed by western blot with 12226-1-AP (SH2B1 Antibody) at dilution of 1:600 incubated at room temperature for 1.5 hours.



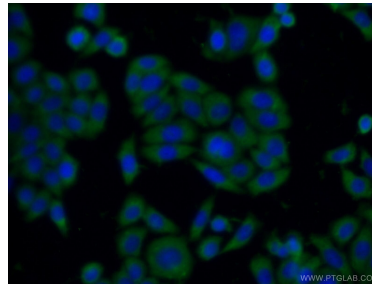
IP Result of anti-SH2B1 (IP:12226-1-AP, 4ug; Detection:12226-1-AP 1:600) with HEK-293 cells lysate 3000ug.



Immunohistochemical analysis of paraffin-embedded human ovary tissue slide using 12226-1-AP (SH2B1 Antibody) at dilution of 1:50 (under 10x lens).



Immunohistochemical analysis of paraffin-embedded human ovary tissue slide using 12226-1-AP (SH2B1 Antibody) at dilution of 1:50 (under 40x lens).



Immunofluorescent analysis of HeLa cells using 12226-1-AP (SH2B1 antibody) at dilution of 1:50 and Alexa Fluor 488-conjugated AffiniPure Goat Anti-Rabbit IgG(H+L).