

À des fins de recherche uniquement

Anticorps Polyclonal de lapin anti-NDP52



Numéro de catalogue: 12229-1-AP

Phare

42 Publications

Informations de base

Numéro de catalogue:

12229-1-AP

Taille:

150ul, Concentration: 600 µg/ml by Nanodrop and 300 µg/ml by Bradford method using BSA as the standard;

Hôte:

Lapin

Isotype:

IgG

Immunogen Catalog Number:

AG2866

Numéro d'acquisition GenBank:

BC015893

Identification du gène (NCBI):

10241

Nom complet:

calcium binding and coiled-coil domain 2

MW calculé

446 aa, 52 kDa

MW observés:

52 kDa

Méthode de purification:

Purification par affinité contre l'antigène

Dilutions recommandées:

WB 1:500-1:2000

IP 0.5-4.0 ug for IP and 1:500-1:2000 for WB

IHC 1:50-1:500

IF 1:20-1:200

Applications

Applications testées:

IF, IHC, IP, WB, ELISA

Demandes citées:

IF, IP, WB

Spécificité de l'espèce:

Humain, rat, souris

Espèces citées:

Humain, porc, rat, souris

Remarque-IHC: il est suggéré de démasquer l'antigène avec un tampon de TE buffer pH 9,0; (*) A défaut, le démasquage de l'antigène peut être effectué avec un tampon citrate pH 6,0.

Contrôles positifs:

WB : cellules HeLa, tissu de muscle squelettique de rat

IP : cellules HeLa,

IHC : tissu de tumeur ovarienne humain, tissu de muscle squelettique humain

IF : cellules HeLa,

Informations générales

NDP52, also named as CALCOCO2, is an autophagy receptor. It plays a role in ruffle formation and actin cytoskeleton organization. Mouse/Rat NDP52 has some isoforms with MW 28-40 kDa and 67 kDa. Human NDP52 has some isoforms with MW 43-47 kDa and 52-55 kDa,

Publications notables

Autrice	Pubmed ID	Journal	Application
Shouheng Jin	28965816	Mol Cell	WB
Sebastian Boland	36207292	Nat Commun	WB
Jureepon Roboon	36274991	Front Cell Neurosci	WB

Stockage

Stockage:

Stocker à -20°C. Stable pendant un an après l'expédition.

Tampon de stockage:

PBS avec azoture de sodium à 0,02 % et glycérol à 50 % pH 7,3

L'aliquotage n'est pas nécessaire pour le stockage à -20C

*** Les 20ul contiennent 0,1% de BSA.

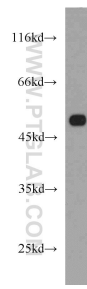
For technical support and original validation data for this product please contact:

T: 1 (888) 4PTGLAB (1-888-478-4522) (toll free in USA), or 1(312) 455-8498 (outside USA)

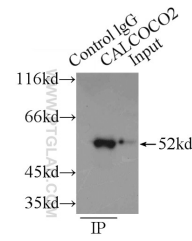
E: proteintech@ptglab.com
W: ptglab.com

This product is exclusively available under Proteintech Group brand and is not available to purchase from any other manufacturer.

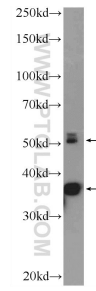
Données de validation sélectionnées



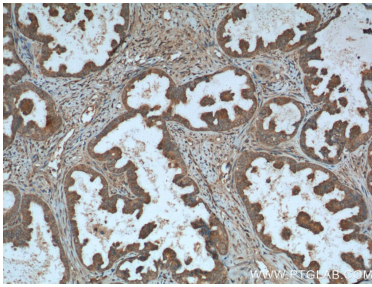
HeLa cells were subjected to SDS PAGE followed by western blot with 12229-1-AP (NDP52 antibody) at dilution of 1:1000 incubated at room temperature for 1.5 hours.



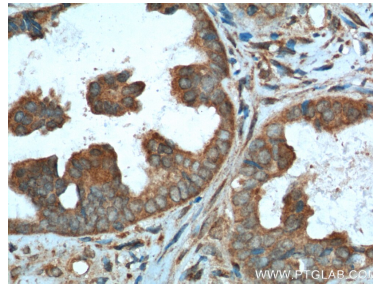
IP Result of anti-NDP52 (IP:12229-1-AP, 3ug; Detection:12229-1-AP 1:1000) with HeLa cells lysate 2150ug.



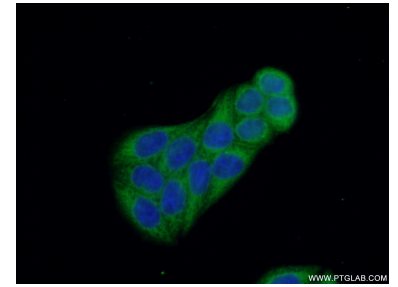
rat skeletal muscle tissue was subjected to SDS PAGE followed by western blot with 12229-1-AP (NDP52 Antibody) at dilution of 1:1000 incubated at room temperature for 1.5 hours.



Immunohistochemical analysis of paraffin-embedded human ovary tumor tissue slide using 12229-1-AP (NDP52 Antibody) at dilution of 1:200 (under 10x lens). Heat mediated antigen retrieval with Tris-EDTA buffer (pH 9.0).



Immunohistochemical analysis of paraffin-embedded human ovary tumor tissue slide using 12229-1-AP (NDP52 Antibody) at dilution of 1:200 (under 40x lens). Heat mediated antigen retrieval with Tris-EDTA buffer (pH 9.0).



Immunofluorescent analysis of (-20°C Ethanol) fixed HeLa cells using 12229-1-AP (NDP52 antibody) at dilution of 1:50 and Alexa Fluor 488-conjugated AffiniPure Goat Anti-Rabbit IgG(H+L).