

À des fins de recherche uniquement

# Anticorps Polyclonal de lapin anti-PRKACB



Numéro de catalogue: 12232-1-AP

6 Publications

## Informations de base

Numéro de catalogue:  
12232-1-AP

Taille:  
150ul, Concentration: 550 µg/ml by Nanodrop and 333 µg/ml by Bradford method using BSA as the standard;

Hôte:  
Lapin

Isotype:  
IgG

Immunogen Catalog Number:  
AG2870

Numéro d'acquisition GenBank:  
BC016285

Identification du gène (NCBI):  
5567

Nom complet:  
protein kinase, cAMP-dependent, catalytic, beta

MW calculé  
41 kDa, 46 kDa

MW observés:  
36-55 kDa

Méthode de purification:  
Purification par affinité contre l'antigène

Dilutions recommandées:  
WB 1:500-1:1000  
IP 0.5-4.0 ug for IP and 1:500-1:1000 for WB  
IHC 1:50-1:500  
IF 1:50-1:500

## Applications

Applications testées:  
IF, IHC, IP, WB, ELISA

Demandes citées:  
IF, IHC, IP, WB

Spécificité de l'espèce:  
Humain, rat, souris

Espèces citées:  
Humain, rat, souris

**Remarque-IHC: il est suggéré de démasquer l'antigène avec un tampon de TE buffer pH 9.0; (\*) A défaut, 'le démasquage de l'antigène peut être effectué avec un tampon citrate pH 6,0.**

Contrôles positifs:

WB : cellules MCF-7, cellules A549, cellules HT-1080, cellules PC-3, tissu cardiaque de souris, tissu cérébral de souris

IP : tissu cérébral de souris,

IHC : tissu cérébral de souris, tissu de médulloblastome humain

IF : cellules HeLa,

## Informations générales

PRKACB, also named as PKA C-beta, belongs to the protein kinase superfamily. AGC Ser/Thr protein kinase family and cAMP subfamily. It mediates cAMP-dependent signaling triggered by receptor binding to GPCRs. PKA activation regulates diverse cellular processes such as cell proliferation, the cell cycle, differentiation and regulation of microtubule dynamics, chromatin condensation and decondensation, nuclear envelope disassembly and reassembly, as well as regulation of intracellular transport mechanisms and ion flux.

## Publications notables

Autrice	Pubmed ID	Journal	Application
Yang Fu	35658231	Biomed Pharmacother	WB
Yongxia Wang	31998791	Biomed Res Int	WB
Fan Wu	36012545	Int J Mol Sci	WB

## Stockage

Stockage:

Stocker à -20°C. Stable pendant un an après l'expédition.

Tampon de stockage:

PBS avec azoture de sodium à 0,02 % et glycérol à 50 % pH 7,3

L'aliquotage n'est pas nécessaire pour le stockage à -20C

\*\*\* Les 20ul contiennent 0,1% de BSA.

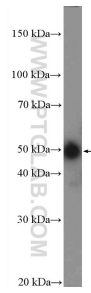
For technical support and original validation data for this product please contact:

T: 1 (888) 4PTGLAB (1-888-478-4522) (toll free in USA), or 1(312) 455-8498 (outside USA)

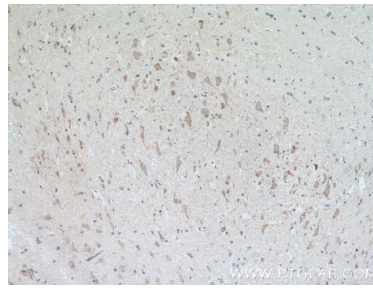
E: proteintech@ptglab.com  
W: ptglab.com

This product is exclusively available under Proteintech Group brand and is not available to purchase from any other manufacturer.

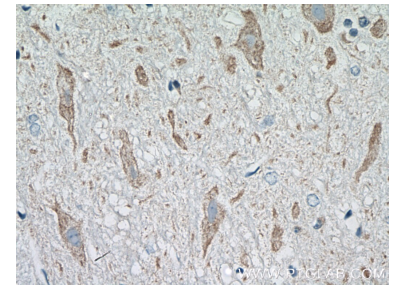
## Données de validation sélectionnées



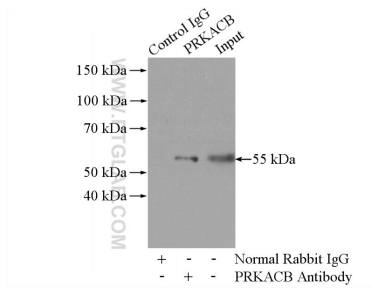
MCF-7 cells were subjected to SDS PAGE followed by western blot with 12232-1-AP (PRKACB Antibody) at dilution of 1:600 incubated at room temperature for 1.5 hours.



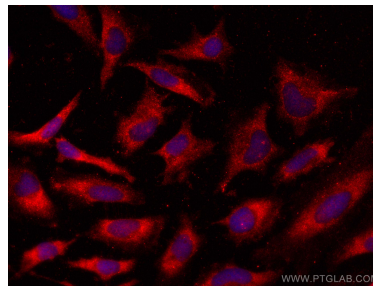
Immunohistochemical analysis of paraffin-embedded mouse brain tissue slide using 12232-1-AP (PRKACB antibody) at dilution of 1:200 (under 10x lens). Heat mediated antigen retrieval with Tris-EDTA buffer (pH 9.0).



Immunohistochemical analysis of paraffin-embedded mouse brain tissue slide using 12232-1-AP (PRKACB antibody) at dilution of 1:200 (under 40x lens). Heat mediated antigen retrieval with Tris-EDTA buffer (pH 9.0).



IP Result of anti-PRKACB (IP:12232-1-AP, 4 $\mu$ g; Detection:12232-1-AP 1:500) with mouse brain tissue lysate 2640 $\mu$ g.



Immunofluorescent analysis of (-20°C Ethanol) fixed HeLa cells using PRKACB antibody (12232-1-AP) at dilution of 1:200 and CoraLite®594-Conjugated AffiniPure Goat Anti-Rabbit IgG(H+L).