

À des fins de recherche uniquement

Anticorps Polyclonal de lapin anti-RCAS1



Numéro de catalogue: 12255-1-AP **Phare**

Informations de base

Numéro de catalogue:
12255-1-AP

Taille:
150ul, Concentration: 750 µg/ml by Nanodrop and 373 µg/ml by Bradford method using BSA as the standard;

Hôte:
Lapin

Isotype:
IgG

Immunogen Catalog Number:
AG2905

Numéro d'acquisition GenBank:
BC017729

Identification du gène (NCBI):
9166

Nom complet:
estrogen receptor binding site associated, antigen, 9

MW calculé
213 aa, 24 kDa

MW observés:
32 kDa

Méthode de purification:
Purification par affinité contre l'antigène

Dilutions recommandées:
WB 1:1000-1:4000
IP 0.5-4.0 ug for IP and 1:1000-1:4000 for WB
IHC 1:250-1:1000
IF 1:600-1:2400

Applications

Applications testées:
IF, IHC, IP, WB, ELISA

Spécificité de l'espèce:
Humain, rat, souris

Remarque-IHC: il est suggéré de démasquer l'antigène avec un tampon de TE buffer pH 9.0; (*) À défaut, 'le démasquage de l'antigène peut être effectué avec un tampon citrate pH 6,0.

Contrôles positifs:

WB : cellules HEK-293, cellules HeLa, tissu cardiaque de rat, tissu cardiaque de souris

IP : cellules HeLa,

IHC : tissu de côlon humain,

IF : cellules HEK-293,

Informations générales

Estrogen receptor-binding fragment-associated antigen 9 (EBAG9) gene was identified as an estrogen-responsive gene. The gene product, receptor-binding cancer antigen expressed on SiSo cells (RCAS1), is associated with aggressive characteristics and poor overall survival for 15 different human malignancies. The correlation between RCAS1 expression and several clinicopathological variables, including tumor size, clinical stage, invasion depth and lymph node metastasis highlights this molecule's clinical significance. Expression of RCAS1 in tumor cells plays an important role in evasion from host immune system resulting tumor progression, invasion and metastasis. Further exploration of RCAS1 biological function will facilitate development of novel therapeutic strategies that target RCAS1.

Stockage

Stockage:

Stocker à -20°C. Stable pendant un an après l'expédition.

Tampon de stockage:

PBS avec azoture de sodium à 0,02 % et glycérol à 50 % pH 7,3

L'aliquotage n'est pas nécessaire pour le stockage à -20C

*** Les 20ul contiennent 0,1% de BSA.

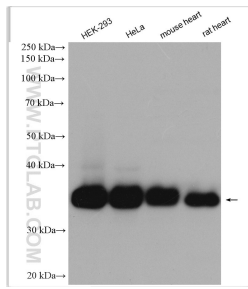
For technical support and original validation data for this product please contact:

T: 1 (888) 4PTGLAB (1-888-478-4522) (toll free in USA), or 1(312) 455-8498 (outside USA)

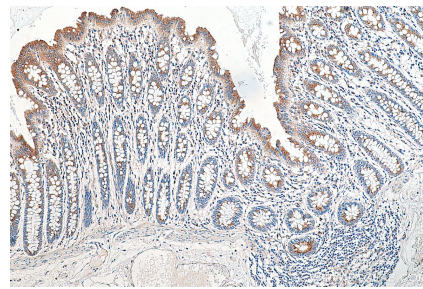
E: proteintech@ptglab.com
W: ptglab.com

This product is exclusively available under Proteintech Group brand and is not available to purchase from any other manufacturer.

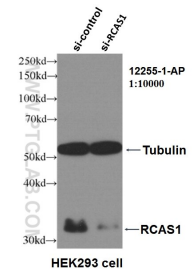
Données de validation sélectionnées



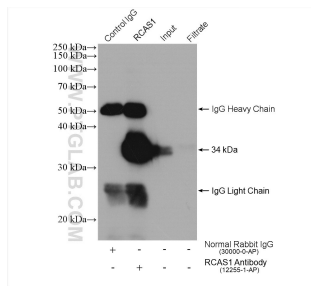
Various lysates were subjected to SDS PAGE followed by western blot with 12255-1-AP (RCAS1 antibody) at dilution of 1:2000 incubated at room temperature for 1.5 hours.



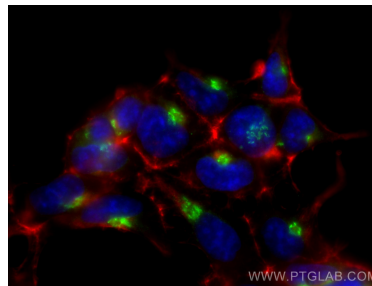
Immunohistochemical analysis of paraffin-embedded human colon tissue slide using 12255-1-AP (RCAS1 antibody) at dilution of 1:500 (under 10x lens). Heat mediated antigen retrieval with Tris-EDTA buffer (pH 9.0).



WB result of RCAS1 antibody (12255-1-AP, 1:10000) with si-control and si-RCAS1 transfected HEK293 cells.



IP result of anti-RCAS1(IP:12255-1-AP, 4ug; Detection:12255-1-AP 1:2000) with HeLa cells lysate 1720 ug.



Immunofluorescent analysis of (-20°C Methanol) fixed HEK-293 cells using RCAS1 antibody (12255-1-AP) at dilution of 1:1200 and CoraLite@488-Conjugated AffiniPure Goat Anti-Rabbit IgG(H+L), CL594-Phalloidin (red).