

À des fins de recherche uniquement

# Anticorps Polyclonal de lapin anti-MTHFD2



Numéro de catalogue: 12270-1-AP

Phare

34 Publications

## Informations de base

Numéro de catalogue:  
12270-1-AP

Taille:  
150ul, Concentration: 350 µg/ml by Nanodrop and 213 µg/ml by Bradford method using BSA as the standard;

Hôte:  
Lapin

Isotype:  
IgG

Immunogen Catalog Number:  
AG2911

Numéro d'acquisition GenBank:  
BC017054

Identification du gène (NCBI):  
10797

Nom complet:  
methylenetetrahydrofolate dehydrogenase (NADP+ dependent) 2, methenyltetrahydrofolate cyclohydrolase

MW calculé  
350 aa, 38 kDa

MW observés:  
33-38 kDa

Méthode de purification:  
Purification par affinité contre l'antigène

Dilutions recommandées:  
WB 1:1000-1:8000  
IP 0.5-4.0 ug for IP and 1:1000-1:8000 for WB  
IHC 1:200-1:800

## Applications

Applications testées:  
IHC, IP, WB, ELISA

Demandes citées:  
CoIP, IF, IHC, IP, WB

Spécificité de l'espèce:  
Humain, rat, souris

Espèces citées:  
Humain, souris

**Remarque-IHC: il est suggéré de démasquer l'antigène avec un tampon de TE buffer pH 9.0; (\*) À défaut, 'le démasquage de l'antigène peut être effectué avec un tampon citrate pH 6.0.**

Contrôles positifs:

WB : cellules A549, cellules HEK-293T, cellules Jurkat, tissu testiculaire de rat, tissu testiculaire de souris

IP : cellules A549, tissu testiculaire de souris

IHC : tissu de cancer du côlon humain,

## Informations générales

Methylenetetrahydrofolate dehydrogenase 2 (MTHFD2) is a folate-coupled mitochondrial metabolic enzyme characterized by methylenetetrahydrofolate dehydrogenase and cyclohydrolase activity. It was demonstrated that suppression of MTHFD2 inhibits methylation reactions, decreases protein synthesis and disrupts redox homeostasis, which may ultimately result in significant changes in cellular metabolic phenotype. MTHFD2 is reported to be up-regulated in various tumours, such as lung adenocarcinoma (PMID: 34121323) and breast cancer (PMID: 34007312).

## Publications notables

Autrice	Pubmed ID	Journal	Application
Francesc Baixauli	36171294	Nature	WB
Costas Koufaris	30275950	Cancer Metab	WB, CoIP
César Vásquez-Trincado	34550363	Hum Mol Genet	WB

## Stockage

Stockage:

Stocker à -20°C. Stable pendant un an après l'expédition.

Tampon de stockage:

PBS avec azoture de sodium à 0,02 % et glycérol à 50 % pH 7,3

L'aliquotage n'est pas nécessaire pour le stockage à -20C

\*\*\* Les 20ul contiennent 0,1% de BSA.

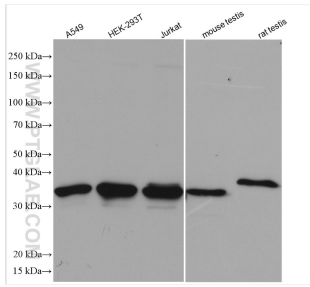
For technical support and original validation data for this product please contact:

T: 1 (888) 4PTGLAB (1-888-478-4522) (toll free in USA), or 1(312) 455-8498 (outside USA)

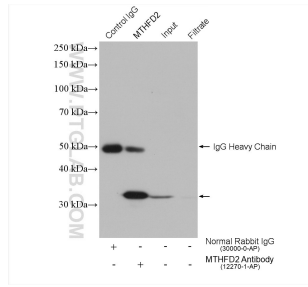
E: proteintech@ptglab.com  
W: ptglab.com

This product is exclusively available under Proteintech Group brand and is not available to purchase from any other manufacturer.

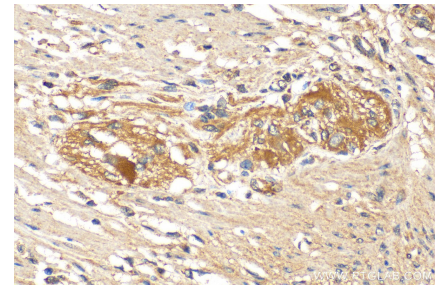
## Données de validation sélectionnées



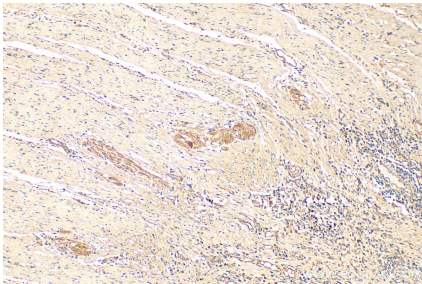
Various lysates were subjected to SDS PAGE followed by western blot with 12270-1-AP (MTHFD2 antibody) at dilution of 1:4000 incubated at room temperature for 1.5 hours.



IP result of anti-MTHFD2(IP:12270-1-AP, 4ug; Detection:12270-1-AP 1:4000) with A549 cells lysate 1480 ug.



Immunohistochemical analysis of paraffin-embedded human colon cancer tissue slide using 12270-1-AP (MTHFD2 antibody) at dilution of 1:400 (under 40x lens). Heat mediated antigen retrieval with Tris-EDTA buffer (pH 9.0).



Immunohistochemical analysis of paraffin-embedded human colon cancer tissue slide using 12270-1-AP (MTHFD2 antibody) at dilution of 1:400 (under 10x lens). Heat mediated antigen retrieval with Tris-EDTA buffer (pH 9.0).