

À des fins de recherche uniquement

# Anticorps Polyclonal de lapin anti-SSSCA1



Numéro de catalogue: 12273-1-AP

Phare

1 Publications

## Informations de base

Numéro de catalogue:  
12273-1-AP

Taille:  
150ul, Concentration: 500 µg/ml by Nanodrop and 267 µg/ml by Bradford method using BSA as the standard;

Hôte:  
Lapin

Isotype:  
IgG

Immunogen Catalog Number:  
AG2916

Numéro d'acquisition GenBank:  
BC014791

Identification du gène (NCBI):  
10534

Nom complet:  
Sjogren syndrome/scleroderma autoantigen 1

MW calculé  
199 aa, 21 kDa

MW observés:  
27 kDa

Méthode de purification:  
Purification par affinité contre l'antigène

Dilutions recommandées:  
WB 1:500-1:1000  
IP 0.5-4.0 ug for IP and 1:500-1:2000 for WB  
IHC 1:50-1:500  
IF 1:10-1:100

## Applications

Applications testées:  
FC, IF, IHC, IP, WB, ELISA

Demandes citées:  
WB

Spécificité de l'espèce:  
Humain, rat, souris

Espèces citées:  
Humain

**Remarque-IHC: il est suggéré de démasquer l'antigène avec un tampon de TE buffer pH 9,0; (\*) A défaut, le démasquage de l'antigène peut être effectué avec un tampon citrate pH 6,0.**

Contrôles positifs:

WB : cellules HeLa, cellules A549, cellules NIH/3T3

IP : cellules HeLa,

IHC : tissu testiculaire de souris,

IF : cellules HeLa,

## Informations générales

SSSCA1, also named as Autoantigen p27, is centromere-associated protein. It may induce anti-centromere antibodies. SSSCA1 plays a role in mitosis. It's involved in Sjogren syndrome/scleroderma. The calculated MW of SSSCA1 is 21.5 kDa (native form), with modification the MW is about 23- 27 kDa.

## Publications notables

Autrice	Pubmed ID	Journal	Application
Yuichi Yagita	37480851	Cell	WB

## Stockage

Stockage:

Stocker à -20°C. Stable pendant un an après l'expédition.

Tampon de stockage:

PBS avec azoture de sodium à 0,02 % et glycérol à 50 % pH 7,3

L'aliquotage n'est pas nécessaire pour le stockage à -20C

\*\*\* Les 20ul contiennent 0,1% de BSA.

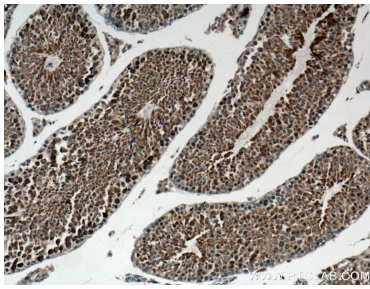
For technical support and original validation data for this product please contact:

T: 1 (888) 4PTGLAB (1-888-478-4522) (toll free in USA), or 1(312) 455-8498 (outside USA)

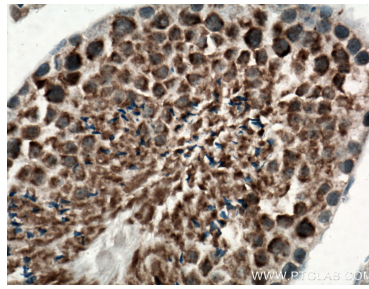
E: proteintech@ptglab.com  
W: ptglab.com

This product is exclusively available under Proteintech Group brand and is not available to purchase from any other manufacturer.

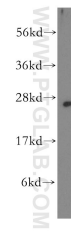
## Données de validation sélectionnées



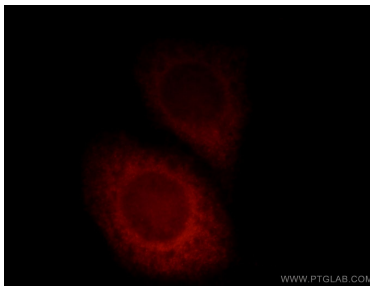
Immunohistochemical analysis of paraffin-embedded mouse testis tissue slide using 12273-1-AP (SSSCA1 antibody) at dilution of 1:100 (under 10x lens). Heat mediated antigen retrieval with Tris-EDTA buffer (pH 9.0).



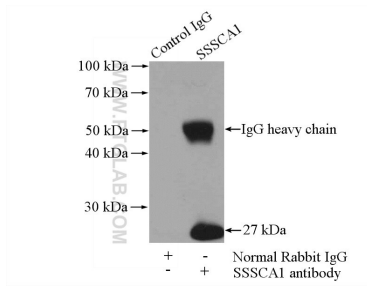
Immunohistochemical analysis of paraffin-embedded mouse testis tissue slide using 12273-1-AP (SSSCA1 antibody) at dilution of 1:100 (under 40x lens). Heat mediated antigen retrieval with Tris-EDTA buffer (pH 9.0).



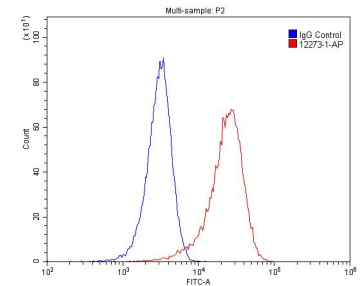
HeLa cells were subjected to SDS PAGE followed by western blot with 12273-1-AP (SSSCA1 antibody) at dilution of 1:500 incubated at room temperature for 1.5 hours.



Immunofluorescent analysis of HeLa cells, using SSSCA1 antibody 12273-1-AP at 1:25 dilution and Rhodamine-labeled goat anti-rabbit IgG (red).



IP Result of anti-SSSCA1 (IP:12273-1-AP, 4ug; Detection:12273-1-AP 1:1000) with HeLa cells lysate 2000ug.



$1 \times 10^6$  HeLa cells were stained with 0.2 ug SSSCA1 antibody (12273-1-AP) and CoraLite488-Conjugated AffiniPure Goat Anti-Rabbit IgG(H+L) at dilution 1:1500 (red), or stained with 0.2 ug isotype control and CoraLite488-Conjugated AffiniPure Goat Anti-Rabbit IgG(H+L) at dilution 1:1500 (blue). Cells were fixed with 4% PFA and permeabilized with 0.1% Triton X-100.