

À des fins de recherche uniquement

Anticorps Polyclonal de lapin anti-AGR2



Numéro de catalogue: 12275-1-AP

Phare

14 Publications

Informations de base

Numéro de catalogue:
12275-1-AP

Taille:
150ul, Concentration: 800 µg/ml by
Nanodrop;

Hôte:
Lapin

Isotype:
IgG

Immunogen Catalog Number:
AG2919

Numéro d'acquisition GenBank:
BC015503

Identification du gène (NCBI):
10551

Nom complet:
anterior gradient homolog 2 (Xenopus
laevis)

MW calculé
175 aa, 20 kDa

MW observés:
17-20 kDa

Méthode de purification:
Purification par affinité contre
l'antigène

Dilutions recommandées:
WB 1:500-1:2000
IP 0.5-4.0 ug for IP and 1:500-1:2000
for WB
IHC 1:50-1:500

Applications

Applications testées:
FC, IHC, IP, WB, ELISA

Demandes citées:
IF, IHC, WB

Spécificité de l'espèce:
Humain, rat, souris

Espèces citées:
Humain, rat, souris

Contrôles positifs:

WB : cellules A549, tissu de côlon de rat, tissu
d'estomac de rat, tissu d'estomac de souris

IP : cellules A549,

IHC : tissu de cancer du sein humain, tissu de côlon
humain

**Remarque-IHC: il est suggéré de démasquer
l'antigène avec un tampon de TE buffer pH
9,0; (*) À défaut, le démasquage de
l'antigène peut être effectué avec un
tampon citrate pH 6,0.**

Informations générales

AGR2, also named AG2 or HPC8, encodes anterior gradient protein 2 homolog which belongs to the AGR family. It is a secreted protein localized in endoplasmic reticulum. AGR2 plays roles in MUC2 post-transcriptional synthesis, secretion and production of mucus by intestinal cells. AGR2 was significantly elevated in the pancreatic juice from patients with pre-malignant conditions as well as pancreatic cancer compared to control pancreatic juice samples. AGR2 levels in pancreatic juice could potentially be used in assessment of high-risk patients undergoing endoscopic procedures.

Publications notables

Autrice	Pubmed ID	Journal	Application
Michael Herfs	24076771	Am J Surg Pathol	IHC
Ayumi Kanno	30290061	J Diabetes Investig	IF
Michael Herfs	24839092	Int J Cancer	IHC

Stockage

Stockage:

Stocker à -20°C. Stable pendant un an après l'expédition.

Tampon de stockage:

PBS avec azoture de sodium à 0,02 % et glycérol à 50 % pH 7,3

L'aliquotage n'est pas nécessaire pour le stockage à -20C

*** Les 20ul contiennent 0,1% de BSA.

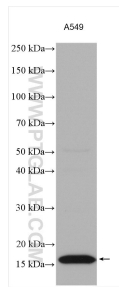
For technical support and original validation data for this product please contact:

T: 1 (888) 4PTGLAB (1-888-478-4522) (toll free
in USA), or 1(312) 455-8498 (outside USA)

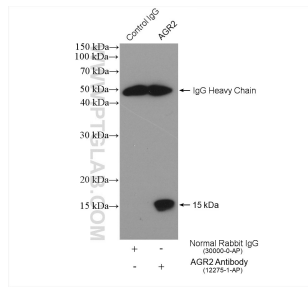
E: proteintech@ptglab.com
W: ptglab.com

This product is exclusively available under Proteintech Group brand and is not available to purchase from any other manufacturer.

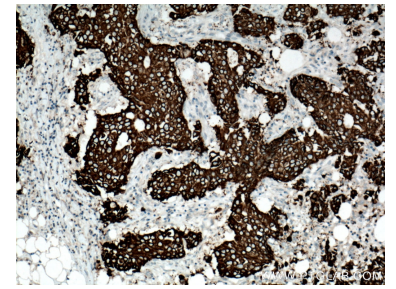
Données de validation sélectionnées



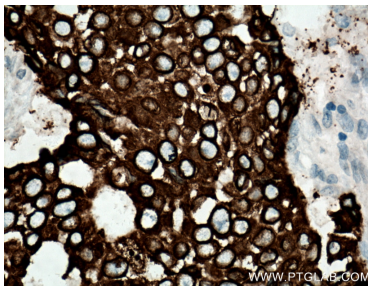
Various lysates were subjected to SDS PAGE followed by western blot with 12275-1-AP (AGR2 antibody) at dilution of 1:1000 incubated at room temperature for 1.5 hours.



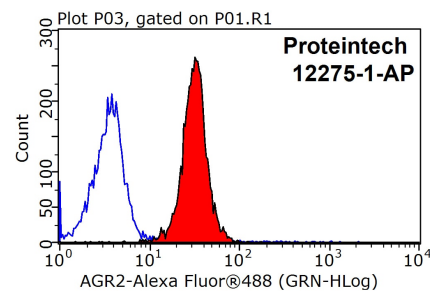
IP result of anti-AGR2(IP:12275-1-AP, 4ug; Detection:12275-1-AP 1:1000) with A549 cells lysate 1200 ug.



Immunohistochemical analysis of paraffin-embedded human breast cancer tissue slide using 12275-1-AP (AGR2 antibody) at dilution of 1:200 (under 10x lens. Heat mediated antigen retrieval with Tris-EDTA buffer (pH 9.0).



Immunohistochemical analysis of paraffin-embedded human breast cancer tissue slide using 12275-1-AP (AGR2 antibody) at dilution of 1:200 (under 40x lens. Heat mediated antigen retrieval with Tris-EDTA buffer (pH 9.0).



1X10⁶ MCF-7 cells were stained with 0.2ug AGR2 antibody (12275-1-AP, red) and control antibody (blue). Fixed with 90% MeOH blocked with 3% BSA (30 min). Alexa Fluor 488-conjugated AffiniPure Goat Anti-Rabbit IgG(H+L) with dilution 1:1500.