

À des fins de recherche uniquement

Anticorps Polyclonal de lapin anti-CIDEA



Numéro de catalogue: 12287-1-AP

3 Publications

Informations de base

Numéro de catalogue:
12287-1-AP

Taille:
150ul, Concentration: 550 µg/ml by
Nanodrop and 313 µg/ml by Bradford
method using BSA as the standard;

Hôte:
Lapin

Isotype:
IgG

Immunogen Catalog Number:
AG2913

Numéro d'acquisition GenBank:
BC016851

Identification du gène (NCBI):
63924

Nom complet:
cell death-inducing DFFA-like
effector c

MW calculé
238 aa, 27 kDa

MW observés:
27-35 kDa

Méthode de purification:
Purification par affinité contre
l'antigène

Dilutions recommandées:
WB 1:500-1:2000

Applications

Applications testées:
WB, ELISA

Demandes citées:
WB

Spécificité de l'espèce:
Humain

Espèces citées:
Humain, souris

Contrôles positifs:

WB : cellules MCF-7, cellules L02

Informations générales

Cell death-inducing DFF45-like effector (CIDE) proteins, including CIDEA, CIDEB and CIDEA (also called Fsp27 in rodents), are predominantly expressed in brown adipose tissues (BAT), liver and WAT. CIDEA was found to be highly expressed in adipose tissues and to function as a lipid droplet-binding protein that promotes lipid accumulation in adipocytes. While normal mouse livers express low levels of CIDEA protein, its expression is highly upregulated in NALFD, but not in chronic ethanol feeding-induced fatty liver. (PMID: 26099526) Catalog# 12287-1-AP recognizing CIDEA (calculated 28 kDa) as a 30 kDa and 45-50 kDa due to its posttranslational modification (PMID: 19258494).

Publications notables

Autrice	Pubmed ID	Journal	Application
Xingran Chen	29136776	Biomed Pharmacother	WB
Yi Jin	35388144	Commun Biol	WB
Mustafa N Okur	37395319	Aging Cell	WB

Stockage

Stockage:

Stocker à -20°C. Stable pendant un an après l'expédition.

Tampon de stockage:

PBS avec azoture de sodium à 0,02 % et glycérol à 50 % pH 7,3

L'aliquotage n'est pas nécessaire pour le stockage à -20C

*** Les 20ul contiennent 0,1% de BSA.

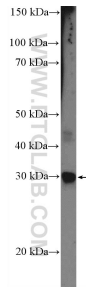
For technical support and original validation data for this product please contact:

T: 1 (888) 4PTGLAB (1-888-478-4522) (toll free
in USA), or 1(312) 455-8498 (outside USA)

E: proteintech@ptglab.com
W: ptglab.com

This product is exclusively available under Proteintech Group brand and is not available to purchase from any other manufacturer.

Données de validation sélectionnées



MCF-7 cells were subjected to SDS PAGE followed by western blot with 12287-1-AP (CIDEA Antibody) at dilution of 1:1000 incubated at room temperature for 1.5 hours.