

À des fins de recherche uniquement

Anticorps Polyclonal de lapin anti-Clusterin



Numéro de catalogue: 12289-1-AP

16 Publications

Informations de base

Numéro de catalogue:

12289-1-AP

Taille:

150ul, Concentration: 300 µg/ml by Nanodrop and 200 µg/ml by Bradford method using BSA as the standard;

Hôte:

Lapin

Isotype:

IgG

Immunogen Catalog Number:

AG2889

Numéro d'acquisition GenBank:

BC010514

Identification du gène (NCBI):

1191

Nom complet:

clusterin

MW calculé

449 aa, 53 kDa

MW observés:

37 kDa

Méthode de purification:

Purification par affinité contre l'antigène

Dilutions recommandées:

WB 1:500-1:2000

IHC 1:50-1:500

IF 1:50-1:500

Applications

Applications testées:

IF, IHC, WB, ELISA

Demandes citées:

CoIP, IF, IHC, WB

Spécificité de l'espèce:

Humain

Espèces citées:

Humain

Remarque-IHC: il est suggéré de démasquer l'antigène avec un tampon de TE buffer pH 9,0; (*) A défaut, 'le démasquage de l'antigène peut être 'effectué avec un tampon citrate pH 6,0.

Contrôles positifs:

WB : tissu plasmatique humain,

IHC : tissu d'amygdalite humain, tissu de cancer du foie humain, tissu de cancer du sein humain

IF : tissu hépatique humain, cellules HeLa

Informations générales

Clusterin (Apolipoprotein J) is a 75-80 kDa heterodimeric glycoprotein produced by a wide array of tissues and found in most biologic fluids (PMID: 7648419; 11906815). It is encoded by one single gene and cleaved posttranslationally into α (34-36 kDa) and β (36-39 kDa) subunits prior to secretion from the cell. Many functions have been described for clusterin, including regulating apoptosis, transporting lipids, controlling cell interactions, regulating complement (PMID: 10694874).

Publications notables

Autrice	Pubmed ID	Journal	Application
Bo Ma	30235220	PLoS One	WB
Julia Kälsch	27709349	Int J Biometeorol	IHC
Lili Donner	27221710	Sci Signal	

Stockage

Stockage:

Stocker à -20°C. Stable pendant un an après l'expédition.

Tampon de stockage:

PBS avec azoture de sodium à 0,02 % et glycérol à 50 % pH 7,3

L'aliquotage n'est pas nécessaire pour le stockage à -20C

*** Les 20ul contiennent 0,1% de BSA.

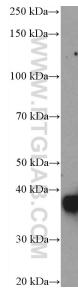
For technical support and original validation data for this product please contact:

T: 1 (888) 4PTGLAB (1-888-478-4522) (toll free in USA), or 1(312) 455-8498 (outside USA)

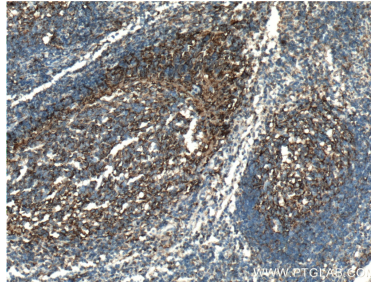
E: proteintech@ptglab.com
W: ptglab.com

This product is exclusively available under Proteintech Group brand and is not available to purchase from any other manufacturer.

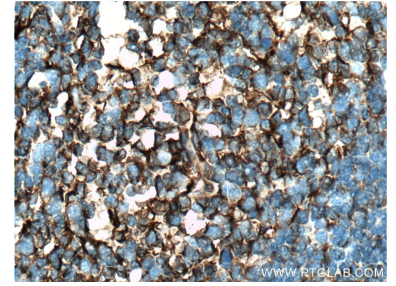
Données de validation sélectionnées



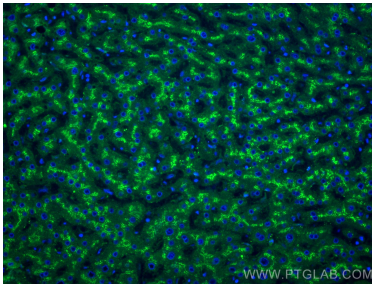
human plasma were subjected to SDS PAGE followed by western blot with 12289-1-AP (Clusterin antibody at dilution of 1:1000 incubated at room temperature for 1.5 hours.



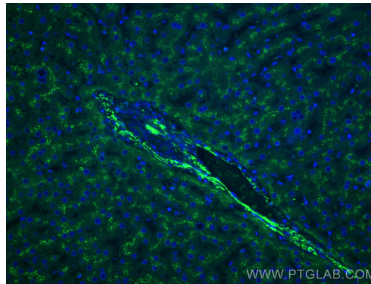
Immunohistochemical analysis of paraffin-embedded human tonsillitis tissue slide using 12289-1-AP (Clusterin antibody at dilution of 1:200 (under 10x lens). Heat mediated antigen retrieval with Tris-EDTA buffer (pH 9.0).



Immunohistochemical analysis of paraffin-embedded human tonsillitis tissue slide using 12289-1-AP (Clusterin antibody at dilution of 1:200 (under 40x lens). Heat mediated antigen retrieval with Tris-EDTA buffer (pH 9.0).



Immunofluorescent analysis of (4% PFA) fixed human liver tissue using Clusterin antibody (12289-1-AP) at dilution of 1:200 and CoraLite®488-Conjugated AffiniPure Goat Anti-Rabbit IgG(H+L).



Immunofluorescent analysis of (4% PFA) fixed human liver tissue using Clusterin antibody (12289-1-AP) at dilution of 1:200 and CoraLite®488-Conjugated AffiniPure Goat Anti-Rabbit IgG(H+L).