

À des fins de recherche uniquement

Anticorps Polyclonal de lapin anti-CLIC4



Numéro de catalogue: 12298-2-AP **Phare**

Informations de base

Numéro de catalogue: 12298-2-AP	Numéro d'acquisition GenBank: BC012444	Méthode de purification: Purification par affinité contre l'antigène
Taille: 150ul , Concentration: 350 µg/ml by Nanodrop and 200 µg/ml by Bradford method using BSA as the standard;	Identification du gène (NCBI): 25932	Dilutions recommandées: WB 1:500-1:1000 IHC 1:50-1:500
Hôte: Lapin	Nom complet: chloride intracellular channel 4	
Isotype: IgG	MW calculé: 253 aa, 29 kDa	
Immunogen Catalog Number: AG2942	MW observés: 29 kDa	

Applications

Applications testées: IHC, WB, ELISA	Contrôles positifs: WB : tissu rénal de souris, cellules HeLa, tissu ovarien de souris, tissu rénal humain IHC : tissu rénal humain,
Spécificité de l'espèce: Humain, rat, souris	
Remarque-IHC: il est suggéré de démasquer l'antigène avec un tampon de TE buffer pH 9,0; (*) À défaut, 'le démasquage de l'antigène peut être effectué avec un tampon citrate pH 6,0.	

Informations générales

Chloride channels are a diverse group of proteins that regulate fundamental cellular processes including stabilization of cell membrane potential, transepithelial transport, maintenance of intracellular pH, and regulation of cell volume. CLIC4 is a p53- and tumor necrosis factor alpha-regulated cytoplasmic and mitochondrial protein that belongs to the CLIC family of intracellular chloride channels. CLICs have actions distinct from traditional cell membrane chloride channels, including formation of ion channels in intracellular organelles and roles in membrane trafficking, apoptosis, and cell differentiation.

Stockage

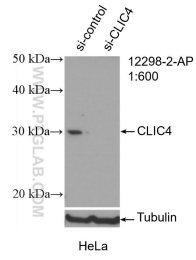
Stockage:
Stocker à -20°C. Stable pendant un an après l'expédition.
Tampon de stockage:
PBS avec azoture de sodium à 0,02 % et glycérol à 50 % pH 7,3
L'aliquotage n'est pas nécessaire pour le stockage à -20C

*** Les 20ul contiennent 0,1% de BSA.

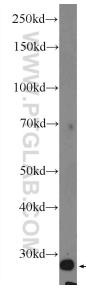
For technical support and original validation data for this product please contact:
T: 1 (888) 4PTGLAB (1-888-478-4522) (toll free in USA), or 1(312) 455-8498 (outside USA)
E: proteintech@ptglab.com
W: ptglab.com

This product is exclusively available under Proteintech Group brand and is not available to purchase from any other manufacturer.

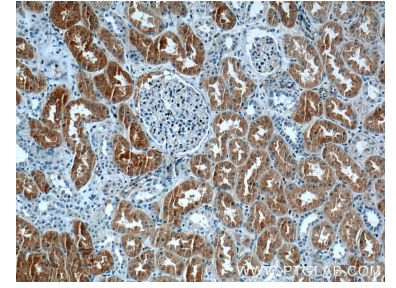
Données de validation sélectionnées



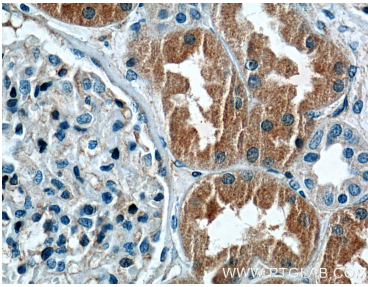
WB result of CLIC4 antibody (12298-2-AP; 1:600; incubated at room temperature for 1.5 hours) with sh-Control and sh-CLIC4 transfected HeLa cells.



mouse kidney tissue were subjected to SDS PAGE followed by western blot with 12298-2-AP (CLIC4 Antibody) at dilution of 1:600 incubated at room temperature for 1.5 hours.



Immunohistochemical analysis of paraffin-embedded human kidney tissue slide using 12298-2-AP (CLIC4 Antibody) at dilution of 1:200 (under 10x lens).



Immunohistochemical analysis of paraffin-embedded human kidney tissue slide using 12298-2-AP (CLIC4 Antibody) at dilution of 1:200 (under 40x lens).