

À des fins de recherche uniquement

# Anticorps Polyclonal de lapin anti-KIN17



Numéro de catalogue: 12313-1-AP

## Informations de base

Numéro de catalogue:  
12313-1-AP

Taille:  
150ul, Concentration: 400 µg/ml by  
Nanodrop and 300 µg/ml by Bradford  
method using BSA as the standard;

Hôte:  
Lapin

Isotype:  
IgG

Immunogen Catalog Number:  
AG2963

Numéro d'acquisition GenBank:  
BC017309

Identification du gène (NCBI):  
22944

Nom complet:  
KIN, antigenic determinant of recA  
protein homolog (mouse)

MW calculé  
393 aa, 45 kDa

MW observés:  
40 kDa

Méthode de purification:  
Purification par affinité contre  
l'antigène

Dilutions recommandées:  
WB 1:1000-1:4000  
IP 0.5-4.0 ug for IP and 1:250-1:1000  
for WB  
IF 1:50-1:500

## Applications

Applications testées:  
IF, IP, WB, ELISA

Spécificité de l'espèce:  
Humain, rat, souris

Contrôles positifs:

WB : cellules HeLa, tissu cardiaque humain

IP : tissu cérébral de souris,

IF : cellules HeLa,

## Informations générales

KIN17 (also known as KIN) is an evolutionarily conserved zinc finger nuclear protein. It consists of three motifs, a zinc finger, a nuclear localization signal and a Kyprides-Onzonis-Woese motif that mediates transcription elongation. KIN17 is ubiquitously expressed in human tissues and participates in DNA replication, DNA repair and cell cycle progression. Emerging evidence has indicated the importance of KIN17 in the pathogenesis and progression of tumors (PMID: 28454391). KIN17 has a calculated molecular weight of 45 kDa, this antibody is raised against human KIN17 and detects a band of about 40 kDa.

## Stockage

Stockage:

Stocker à -20°C. Stable pendant un an après l'expédition.

Tampon de stockage:

PBS avec azoture de sodium à 0,02 % et glycérol à 50 % pH 7,3

L'aliquotage n'est pas nécessaire pour le stockage à -20C

\*\*\* Les 20ul contiennent 0,1% de BSA.

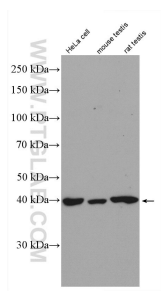
For technical support and original validation data for this product please contact:

T: 1 (888) 4PTGLAB (1-888-478-4522) (toll free  
in USA), or 1(312) 455-8498 (outside USA)

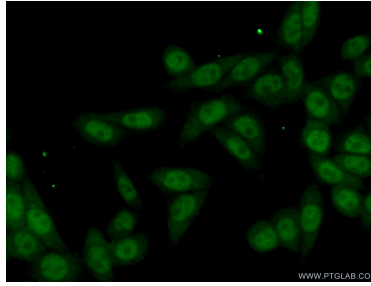
E: proteintech@ptglab.com  
W: ptglab.com

This product is exclusively available under Proteintech Group brand and is not available to purchase from any other manufacturer.

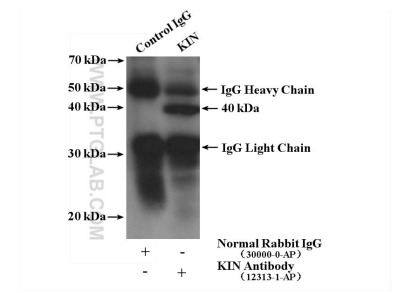
## Données de validation sélectionnées



HeLa cells, mouse testis tissue, and rat testis tissue were subjected to SDS PAGE followed by western blot with 12313-1-AP (KIN17 antibody) at dilution of 1:2000 incubated at room temperature for 1.5 hours.



Immunofluorescent analysis of (4% PFA) fixed HeLa cells using 12313-1-AP (KIN17 antibody) at dilution of 1:50 and Alexa Fluor 488-conjugated AffiniPure Goat Anti-Rabbit IgG(H+L).



IP result of anti-KIN17 (IP:12313-1-AP, 4ug; Detection:12313-1-AP 1:500) with mouse brain tissue lysate 3160 ug.