

À des fins de recherche uniquement

Anticorps Polyclonal de lapin anti-RAB3IP



Numéro de catalogue: 12321-1-AP

Phare

15 Publications

Informations de base

Numéro de catalogue:
12321-1-AP

Taille:
150ul, Concentration: 800 µg/ml by
Nanodrop;

Hôte:
Lapin

Isotype:
IgG

Immunogen Catalog Number:
AG2974

Numéro d'acquisition GenBank:
BC015548

Identification du gène (NCBI):
117177

Nom complet:
RAB3A interacting protein (rabin3)

MW calculé
476 aa, 53 kDa

MW observés:
53/51/43 kDa

Méthode de purification:
Purification par affinité contre
l'antigène

Dilutions recommandées:
WB 1:500-1:3000
IP 0.5-4.0 ug for IP and 1:500-1:2000
for WB
IHC 1:50-1:500
IF 1:50-1:500

Applications

Applications testées:
IF, IHC, IP, WB, ELISA

Demandes citées:
IF, IP, WB

Spécificité de l'espèce:
Humain, rat, souris

Espèces citées:
canin, Humain, rat, souris

Remarque-IHC: il est suggéré de démasquer l'antigène avec un tampon de TE buffer pH 9,0; (*) À défaut, le démasquage de l'antigène peut être effectué avec un tampon citrate pH 6,0.

Contrôles positifs:

WB : tissu cérébral de souris, tissu cardiaque de souris, tissu cardiaque humain, tissu cérébral de rat, tissu cérébral humain, tissu pulmonaire de souris

IP : tissu pulmonaire de souris,

IHC : tissu de cancer de l'estomac humain,

IF : cellules HepG2,

Informations générales

RAB3IP, also known as Rabin8, is a deduced 476-amino acid protein containing a central coiled-coil domain, a bipartite nuclear localization signal, and a C-terminal endoplasmic reticulum retention motif. Rabin8 has several sites for N-glycosylation and phosphorylation. Rabin8 plays important roles in various cellular processes, including ciliogenesis. The GEF activity of Rabin8 towards Rab8 is essential for ciliogenesis and cyst apical membrane transport, but not for exocytosis of discoidal/fusiform-shaped vesicles. This antibody can recognize isoforms with predicted MW's of 53 kDa, 51 kDa, 43 kDa, 45 kDa, 33 kDa and 35 kDa, 29 kDa respectively.

Publications notables

Autrice	Pubmed ID	Journal	Application
Kubilay Demir	24035388	Cell Rep	WB
Yu-Chiang Lai	26471730	EMBO J	WB
Michael C Burke	25313408	J Cell Biol	WB

Stockage

Stockage:

Stocker à -20°C. Stable pendant un an après l'expédition.

Tampon de stockage:

PBS avec azoture de sodium à 0,02 % et glycérol à 50 % pH 7,3

L'aliquotage n'est pas nécessaire pour le stockage à -20C

*** Les 20ul contiennent 0,1% de BSA.

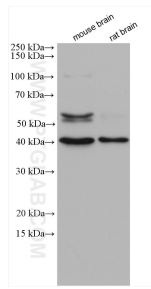
For technical support and original validation data for this product please contact:

T: 1 (888) 4PTGLAB (1-888-478-4522) (toll free in USA), or 1(312) 455-8498 (outside USA)

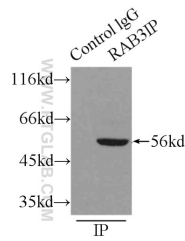
E: proteintech@ptglab.com
W: ptglab.com

This product is exclusively available under Proteintech Group brand and is not available to purchase from any other manufacturer.

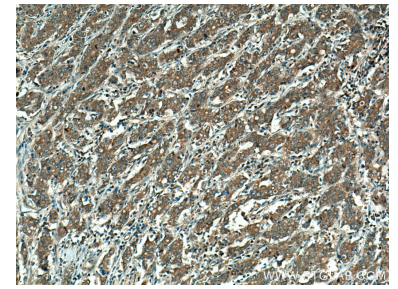
Données de validation sélectionnées



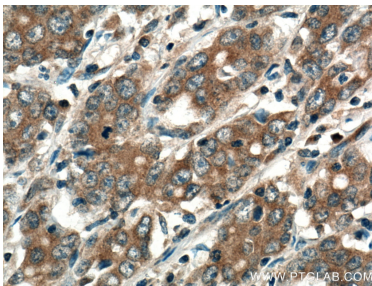
Various lysates were subjected to SDS PAGE followed by western blot with 12321-1-AP (RAB3IP antibody) at dilution of 1:1500 incubated at room temperature for 1.5 hours.



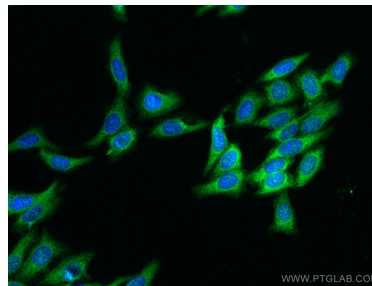
IP Result of anti-RAB3IP/Rabin8 (IP:12321-1-AP, 3ug; Detection:12321-1-AP 1:1000) with mouse lung tissue lysate 4500ug.



Immunohistochemical analysis of paraffin-embedded human stomach cancer tissue slide using 12321-1-AP (RAB3IP/Rabin8 antibody) at dilution of 1:200 (under 10x lens). Heat mediated antigen retrieval with Tris-EDTA buffer (pH 9.0).



Immunohistochemical analysis of paraffin-embedded human stomach cancer tissue slide using 12321-1-AP (RAB3IP/Rabin8 antibody) at dilution of 1:200 (under 40x lens). Heat mediated antigen retrieval with Tris-EDTA buffer (pH 9.0).



Immunofluorescent analysis of (-20°C Ethanol) fixed HepG2 cells using RAB3IP/Rabin8 antibody (12321-1-AP) at dilution of 1:200 and CoraLite® 488-Conjugated AffiniPure Goat Anti-Rabbit IgG(H+L).