

À des fins de recherche uniquement

Anticorps Polyclonal de lapin anti-TAK1



Numéro de catalogue: 12330-2-AP

Phare

35 Publications

Informations de base

Numéro de catalogue:
12330-2-AP

Taille:
150ul, Concentration: 500 µg/ml by
Nanodrop;

Hôte:
Lapin

Isotype:
IgG

Immunogen Catalog Number:
AG3041

Numéro d'acquisition GenBank:
BC017715

Identification du gène (NCBI):
6885

Nom complet:
mitogen-activated protein kinase
kinase kinase 7

MW calculé
579 aa, 64 kDa

MW observés:
64-67 kDa, 75-80 kDa

Méthode de purification:
Purification par affinité contre
l'antigène

Dilutions recommandées:
WB 1:500-1:1000
IHC 1:100-1:400
IF 1:50-1:500

Applications

Applications testées:
IF, IHC, WB, ELISA

Demandes citées:
CoIP, IP, WB

Spécificité de l'espèce:
Humain, souris, Hamster

Espèces citées:
Humain, porc, rat, souris, fish

Remarque-IHC: il est suggéré de démasquer l'antigène avec un tampon de TE buffer pH 9,0; (*) À défaut, le démasquage de l'antigène peut être effectué avec un tampon citrate pH 6,0.

Contrôles positifs:

WB : cellules NIH/3T3, cellules A2780, cellules A375, cellules A431, cellules CHO, cellules COLO 320, cellules HeLa, cellules K-562, cellules MCF-7, cellules SKOV-3, tissu cardiaque de souris

IHC : tissu de cancer de la prostate humain, tissu cérébral de souris, tissu cérébral humain

IF : cellules NIH/3T3,

Informations générales

MAP3K7 (Mitogen-activated protein kinase kinase kinase 7) is also named as TAK1 and belongs to the MAP kinase kinase kinase subfamily. It plays an important role in the cascades of cellular responses evoked by changes in the environment. It has been linked to interleukin-1 receptor and tumor necrosis factor receptor signaling (PMID: 16186825). It has 4 isoforms (53-55 kDa; 64-70 kDa and 75-80 kDa) produced by alternative splicing.

Publications notables

Autrice	Pubmed ID	Journal	Application
Mengqiu Yuan	34472622	EMBO J	WB
Wei Liu	34675006	Diabetes	WB
Yangwei Fan	30462562	Cancer Biol Ther	WB

Stockage

Stockage:

Stocker à -20°C. Stable pendant un an après l'expédition.

Tampon de stockage:

PBS avec azoture de sodium à 0,02 % et glycérol à 50 % pH 7,3

L'aliquotage n'est pas nécessaire pour le stockage à -20C

*** Les 20ul contiennent 0,1% de BSA.

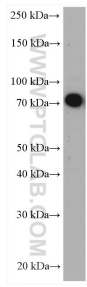
For technical support and original validation data for this product please contact:

T: 1 (888) 4PTGLAB (1-888-478-4522) (toll free in USA), or 1(312) 455-8498 (outside USA)

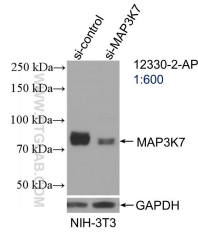
E: proteintech@ptglab.com
W: ptglab.com

This product is exclusively available under Proteintech Group brand and is not available to purchase from any other manufacturer.

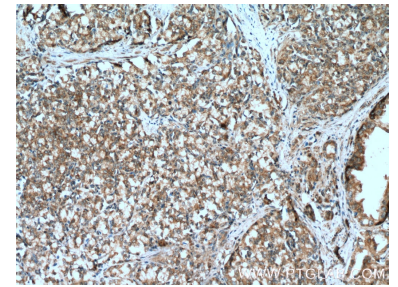
Données de validation sélectionnées



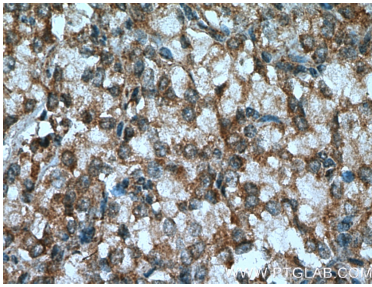
NIH/3T3 cells were subjected to SDS PAGE followed by western blot with 12330-2-AP (TAK1 antibody) at dilution of 1:600 incubated at room temperature for 1.5 hours.



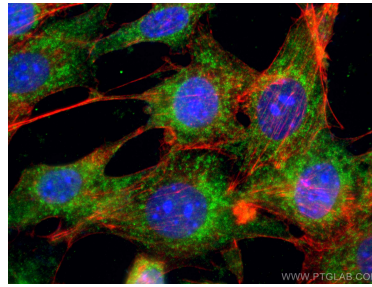
WB result of TAK1 antibody (12330-2-AP; 1:600; incubated at room temperature for 1.5 hours) with sh-Control and sh-TAK1 transfected NIH/3T3 cells.



Immunohistochemical analysis of paraffin-embedded human prostate cancer tissue slide using 12330-2-AP (TAK1 antibody at dilution of 1:200 (under 10x lens). Heat mediated antigen retrieval with Tris-EDTA buffer (pH 9.0).



Immunohistochemical analysis of paraffin-embedded human prostate cancer tissue slide using 12330-2-AP (TAK1 antibody at dilution of 1:200 (under 40x lens). Heat mediated antigen retrieval with Tris-EDTA buffer (pH 9.0).



Immunofluorescent analysis of (4% PFA) fixed NIH/3T3 cells using TAK1 antibody (12330-2-AP) at dilution of 1:100 and CoraLite@488-Conjugated AffiniPure Goat Anti-Rabbit IgG(H+L).