

À des fins de recherche uniquement

Anticorps Polyclonal de lapin anti-IDH1



Numéro de catalogue: 12332-1-AP

Phare

42 Publications

Informations de base

Numéro de catalogue:
12332-1-AP

Taille:
150ul, Concentration: 300 µg/ml by
Nanodrop and 167 µg/ml by Bradford
method using BSA as the standard;

Hôte:
Lapin

Isotype:
IgG

Immunogen Catalog Number:
AG2986

Numéro d'acquisition GenBank:
BC012846

Identification du gène (NCBI):
3417

Nom complet:
isocitrate dehydrogenase 1 (NADP+),
soluble

MW calculé
414 aa, 47 kDa

MW observés:
47 kDa

Méthode de purification:
Purification par affinité contre
l'antigène

Dilutions recommandées:
WB 1:2000-1:10000
IP 0.5-4.0 ug for IP and 1:500-1:1000
for WB
IF 1:10-1:100

Applications

Applications testées:
FC, IF, IP, WB, ELISA

Demandes citées:
CoIP, IF, IHC, IP, WB

Spécificité de l'espèce:
Humain, rat, souris

Espèces citées:
Humain, souris

Contrôles positifs:

WB : cellules HEK-293, cellules HeLa, cellules HepG2,
cellules NIH/3T3, tissu hépatique de rat

IP : cellules MCF-7,

IF : cellules HepG2,

Informations générales

IDH1, also named as PICD and IDP, belongs to the isocitrate and isopropylmalate dehydrogenases family. It is a common feature of a major subset of primary human brain cancers. It can form a homodimer (PMID:15173171). IDH1 mutation is always heterozygotic and IDH1 functions as a dimer, theoretically there will be 25% each wild type and mutant homo-dimers and 50% hetero-dimers present in the tumor cells (PMID:21079649).

Publications notables

Autrice	Pubmed ID	Journal	Application
Ben Li	36290297	Biology (Basel)	WB
John P Morris	31534224	Nature	WB
Wenlong Zhao	36116152	Int Immunopharmacol	WB

Stockage

Stockage:

Stocker à -20°C. Stable pendant un an après l'expédition.

Tampon de stockage:

PBS avec azoture de sodium à 0,02 % et glycérol à 50 % pH 7,3

L'aliquotage n'est pas nécessaire pour le stockage à -20C

*** Les 20ul contiennent 0,1% de BSA.

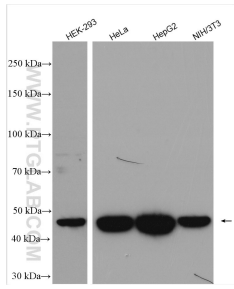
For technical support and original validation data for this product please contact:

T: 1 (888) 4PTGLAB (1-888-478-4522) (toll free
in USA), or 1(312) 455-8498 (outside USA)

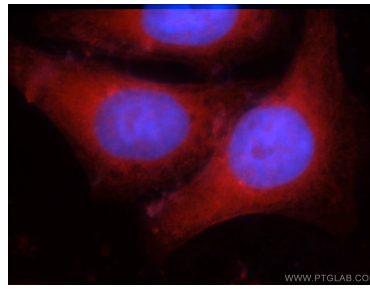
E: proteintech@ptglab.com
W: ptglab.com

This product is exclusively available under Proteintech Group brand and is not available to purchase from any other manufacturer.

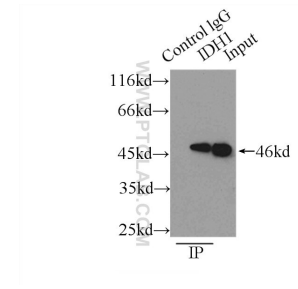
Données de validation sélectionnées



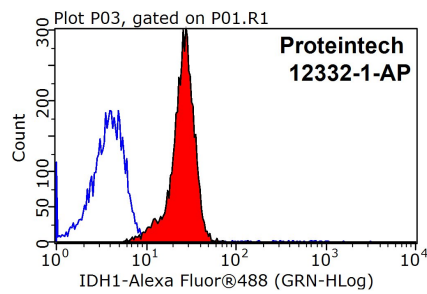
Various lysates were subjected to SDS PAGE followed by western blot with 12332-1-AP (IDH1 antibody) at dilution of 1:5000 incubated at room temperature for 1.5 hours.



Immunofluorescent analysis of HepG2 cells using 12332-1-AP (IDH1 antibody) at dilution of 1:25 and Rhodamine-Goat anti-Rabbit IgG.



IP Result of anti-IDH1 (IP:12332-1-AP, 3ug; Detection:12332-1-AP 1:600) with MCF-7 cells lysate 2500ug.



1X10⁶ HeLa cells were stained with 0.2ug IDH1 antibody (12332-1-AP, red) and control antibody (blue). Fixed with 90% MeOH blocked with 3% BSA (30 min). Alexa Fluor 488-conjugated AffiniPure Goat Anti-Rabbit IgG(H+L) with dilution 1:1500.