

À des fins de recherche uniquement

# Anticorps Polyclonal de lapin anti-E2F3



Numéro de catalogue: 12334-1-AP

3 Publications

## Informations de base

Numéro de catalogue:  
12334-1-AP

Taille:  
150ul, Concentration: 133 µg/ml by Nanodrop and 133 µg/ml by Bradford method using BSA as the standard;

Hôte:  
Lapin

Isotype:  
IgG

Immunogen Catalog Number:  
AG3039

Numéro d'acquisition GenBank:  
BC016847

Identification du gène (NCBI):  
1871

Nom complet:  
E2F transcription factor 3

MW calculé:  
133 aa, 15 kDa

MW observés:  
52 kDa

Méthode de purification:  
Purification par affinité contre l'antigène

Dilutions recommandées:  
WB 1:500-1:1000  
IP 0.5-4.0 ug for IP and 1:500-1:1000 for WB

## Applications

Applications testées:  
IP, WB, ELISA

Demandes citées:  
IHC, WB

Spécificité de l'espèce:  
Humain, rat, souris

Espèces citées:  
Humain

Contrôles positifs:

WB : cellules Y79, cellules HEK-293, cellules HepG2, tissu hépatique de souris

IP : tissu hépatique de souris,

## Informations générales

E2F transcription factors regulate gene expression in concert with the retinoblastoma tumor suppressor family. These transcriptional complexes are master regulators of cell cycle progression, control the expression of genes involved in DNA repair, G2/M checkpoint and differentiation [PMID:22580460]. E2f3 is a transcription activator that binds DNA cooperatively with DP proteins through the E2 recognition site, 5'-TTTC[CG]CGC-3' found in the promoter region of a number of genes whose products are involved in cell cycle regulation or in DNA replication. The DRTF1/E2F complex functions in the control of cell-cycle progression from G1 to S phase. E2F3 binds specifically to RB1 in a cell-cycle dependent manner [PMID:22960857].

## Publications notables

Autrice	Pubmed ID	Journal	Application
Boshi Wang	26510456	Nat Commun	WB, IHC
Dacai Xu	26500101	Mol Med Rep	WB
Dacai Xu	26648285	Mol Med Rep	WB

## Stockage

Stockage:

Stocker à -20°C. Stable pendant un an après l'expédition.

Tampon de stockage:

PBS avec azoture de sodium à 0,02 % et glycérol à 50 % pH 7,3

L'aliquotage n'est pas nécessaire pour le stockage à -20C

\*\*\* Les 20ul contiennent 0,1% de BSA.

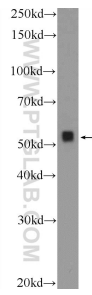
For technical support and original validation data for this product please contact:

T: 1 (888) 4PTGLAB (1-888-478-4522) (toll free in USA), or 1(312) 455-8498 (outside USA)

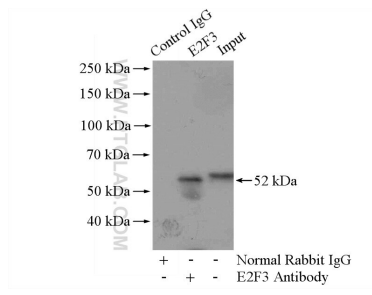
E: proteintech@ptglab.com  
W: ptglab.com

This product is exclusively available under Proteintech Group brand and is not available to purchase from any other manufacturer.

## Données de validation sélectionnées



Y79 cells were subjected to SDS PAGE followed by western blot with 12334-1-AP (E2F3 Antibody) at dilution of 1:600 incubated at room temperature for 1.5 hours.



IP Result of anti-E2F3 (IP:12334-1-AP, 4ug; Detection:12334-1-AP 1:500) with mouse liver tissue lysate 4000ug.