

À des fins de recherche uniquement

Anticorps Polyclonal de lapin anti-LIMK2



Numéro de catalogue: 12350-1-AP

6 Publications

Informations de base

Numéro de catalogue:
12350-1-AP

Taille:
150ul, Concentration: 800 µg/ml by Nanodrop and 247 µg/ml by Bradford method using BSA as the standard;

Hôte:
Lapin

Isotype:
IgG

Immunogen Catalog Number:
AG3011

Numéro d'acquisition GenBank:
BC013051

Identification du gène (NCBI):
3985

Nom complet:
LIM domain kinase 2

MW calculé:
686 aa, 78 kDa

MW observés:
70-80 kDa

Méthode de purification:
Purification par affinité contre l'antigène

Dilutions recommandées:
WB 1:500-1:1000

Applications

Applications testées:
WB, ELISA

Demandes citées:
IF, IHC, WB

Spécificité de l'espèce:
Humain, rat, souris

Espèces citées:
Humain, souris

Contrôles positifs:

WB: cellules NIH/3T3,

Informations générales

The family of LIM kinase (LIMK) includes two similar proteins, LIMK1 and LIMK2, that share overall identity of 53% with 75%, 55%, and 42% amino acid identity in the LIM, kinase, and PDZ domains, respectively. LIMK2 regulates actin cytoskeletal reorganization through phosphorylating and inactivating cofilin, an actin-depolymerizing factor of actin filaments. It also may associate with gamma-tubulin and play a role in mitotic spindle assembly. High levels of LIMK2 are evident in uterus, thymus, and spleen whereas lower levels are observed in brain, heart, liver, stomach, skeletal muscle, and testes according to the results of western blotting (PMID:16399995). It has 3 isoforms produced by alternative splicing of the molecular weight of 70-78 kDa. It can be detected a band of 47 kDa or 50-55 kDa in the testes because the antibody is recognizing the testis-specific variant of LIMK2 and the this difference could be due to species variation (PMID:17928627).

Publications notables

Autrice	Pubmed ID	Journal	Application
Ming Xiong	31695759	Theranostics	IHC
Moyuan Deng	32424991	Adv Healthc Mater	WB
Yue Zhang	29970879	Cell Death Dis	WB, IHC

Stockage

Stockage:

Stocker à -20°C. Stable pendant un an après l'expédition.

Tampon de stockage:

PBS avec azoture de sodium à 0,02 % et glycérol à 50 % pH 7,3

L'aliquotage n'est pas nécessaire pour le stockage à -20°C

*** Les 20ul contiennent 0,1% de BSA.

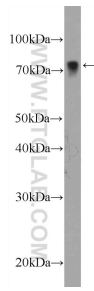
For technical support and original validation data for this product please contact:

T: 1 (888) 4PTGLAB (1-888-478-4522) (toll free in USA), or 1(312) 455-8498 (outside USA)

E: proteintech@ptglab.com
W: ptglab.com

This product is exclusively available under Proteintech Group brand and is not available to purchase from any other manufacturer.

Données de validation sélectionnées



NIH/3T3 cells were subjected to SDS PAGE followed by western blot with 12350-1-AP (LIMK2 Antibody) at dilution of 1:600 incubated at 4 degree celsius over night.