

À des fins de recherche uniquement

Anticorps Polyclonal de lapin anti- VTI1A



Numéro de catalogue: 12354-1-AP

7 Publications

Informations de base

Numéro de catalogue:
12354-1-AP

Taille:
150ul, Concentration: 500 µg/ml by
Nanodrop and 280 µg/ml by Bradford
method using BSA as the standard;

Hôte:
Lapin

Isotype:
IgG

Immunogen Catalog Number:
AG3018

Numéro d'acquisition GenBank:
BC017052

Identification du gène (NCBI):
143187

Nom complet:
vesicle transport through interaction
with t-SNAREs homolog 1A (yeast)

MW calculé
217 aa, 25 kDa

MW observés:
25-29 kDa

Méthode de purification:
Purification par affinité contre
l'antigène

Dilutions recommandées:
WB 1:1000-1:4000
IP 0.5-4.0 ug for IP and 1:500-1:2000
for WB
IF 1:10-1:100

Applications

Applications testées:
IF, IP, WB, ELISA

Demandes citées:
IF, WB

Spécificité de l'espèce:
Humain, rat, souris

Espèces citées:
Humain, souris

Contrôles positifs:

WB : tissu cérébral humain, cellules MCF-7, tissu
cardiaque humain, tissu cérébral de souris, tissu
pulmonaire humain, tissu rénal humain

IP : cellules MCF-7,

IF : cellules NIH/3T3,

Informations générales

Fusion between membranes is mediated by specific SNARE (soluble N-ethylmaleimide-sensitive factor attachment protein receptor) complexes. Two human SNARE proteins, VTI1A and VTI1B, are homologous to the yeast Q-SNARE Vti1p which is part of several SNARE complexes in different transport steps (PMID: 12067063). VTI1A is involved in transport between the endosome and the trans-Golgi network. The SNARE complex of STX10, STX16, VTI1A, and VAMP3 is required for MPR (mannose 6-phosphate receptors) transport from endosomes to the Golgi after delivering lysosomal enzymes to the endocytic pathway (PMID: 18195106). Transport from early/recycling endosomes to the TGN is mediated by the SNARE complex of STX6, STX16, VTI1A and VAMP4 (PMID: 11839770; 21807881).

Publications notables

Autrice	Pubmed ID	Journal	Application
Yi Huo	27322682	Oncotarget	WB
Laufman Orly O	23865579	Traffic	WB, IF
Hui-Yung Song	30965672	Cells	WB

Stockage

Stockage:

Stocker à -20°C. Stable pendant un an après l'expédition.

Tampon de stockage:

PBS avec azoture de sodium à 0,02 % et glycérol à 50 % pH 7,3

L'aliquotage n'est pas nécessaire pour le stockage à -20C

*** Les 20ul contiennent 0,1% de BSA.

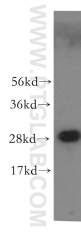
For technical support and original validation data for this product please contact:

T: 1 (888) 4PTGLAB (1-888-478-4522) (toll free
in USA), or 1(312) 455-8498 (outside USA)

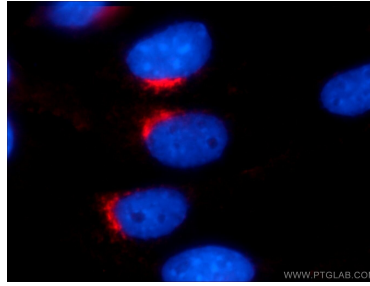
E: proteintech@ptglab.com
W: ptglab.com

This product is exclusively available under Proteintech Group brand and is not available to purchase from any other manufacturer.

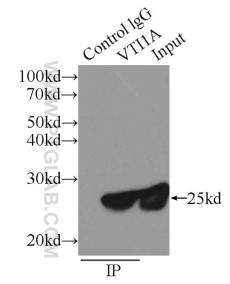
Données de validation sélectionnées



human brain tissue were subjected to SDS PAGE followed by western blot with 12354-1-AP (VTI1A antibody) at dilution of 1:500 incubated at room temperature for 1.5 hours.



Immunofluorescent analysis of NIH/3T3 cells using 12354-1-AP (VTI1A antibody) at dilution of 1:25 and Rhodamine-Goat anti-Rabbit IgG.



IP Result of anti-VTI1A (IP:12354-1-AP, 3ug; Detection:12354-1-AP 1:1000) with MCF-7 cells lysate 520ug.