

À des fins de recherche uniquement

# Anticorps Polyclonal de lapin anti-PINX1



Numéro de catalogue: 12368-1-AP

Phare

9 Publications

## Informations de base

Numéro de catalogue:  
12368-1-AP

Taille:  
150ul, Concentration: 540 µg/ml by  
Nanodrop;

Hôte:  
Lapin

Isotype:  
IgG

Immunogen Catalog Number:  
AG3043

Numéro d'acquisition GenBank:  
BC015479

Identification du gène (NCBI):  
54984

Nom complet:  
PIN2-interacting protein 1

MW calculé  
328 aa, 37 kDa

MW observés:  
40 kDa

Méthode de purification:  
Purification par affinité contre  
l'antigène

Dilutions recommandées:  
WB 1:2000-1:12000  
IF 1:50-1:500

## Applications

Applications testées:  
IF, WB, ELISA

Demandes citées:  
IHC, WB

Spécificité de l'espèce:  
Humain, rat, souris

Espèces citées:  
Humain

Contrôles positifs:

WB : cellules Jurkat, cellules A431, cellules C6,  
cellules HeLa, cellules NIH/3T3

IF : cellules HeLa,

## Informations générales

PINX1, also named as LPTL, LPTS and Protein 67-11-3, is a Liver-related putative tumor suppressor. It belongs to the PINX1 family. PINX1 is a microtubule-binding protein essential for faithful chromosome segregation. It mediates TRF1 and TERT accumulation in nucleolus and enhances TRF1 binding to telomeres. PINX1 inhibits telomerase activity. It may inhibit cell proliferation and act as tumor suppressor. PINX1 has been identified as a critical telomerase inhibitor and proposed to be a putative tumor suppressor gene. Loss of PinX1 has been found in a large variety of malignancies, but the expression status in epithelial ovarian tumors has not been investigated.

## Publications notables

Autrice	Pubmed ID	Journal	Application
JiHoon Kang	34873474	Am J Cancer Res	WB, IHC
Xiao-Peng Tian	25045845	Cancer Lett	WB, IHC
JiHoon Kang	30026037	Hum Pathol	IHC

## Stockage

Stockage:

Stocker à -20°C. Stable pendant un an après l'expédition.

Tampon de stockage:

PBS avec azoture de sodium à 0,02 % et glycérol à 50 % pH 7,3

L'aliquotage n'est pas nécessaire pour le stockage à -20C

\*\*\* Les 20ul contiennent 0,1% de BSA.

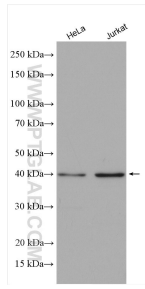
For technical support and original validation data for this product please contact:

T: 1 (888) 4PTGLAB (1-888-478-4522) (toll free  
in USA), or 1(312) 455-8498 (outside USA)

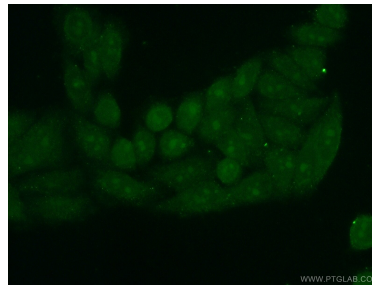
E: [proteintech@ptglab.com](mailto:proteintech@ptglab.com)  
W: [ptglab.com](http://ptglab.com)

This product is exclusively available under Proteintech Group brand and is not available to purchase from any other manufacturer.

## Données de validation sélectionnées



Various lysates were subjected to SDS PAGE followed by western blot with 12368-1-AP (PINX1 antibody) at dilution of 1:6000 incubated at room temperature for 1.5 hours.



Immunofluorescent analysis of (10% Formaldehyde) fixed HeLa cells using 12368-1-AP (PINX1 antibody) at dilution of 1:50 and Alexa Fluor 488-conjugated AffiniPure Goat Anti-Rabbit IgG(H+L).