

À des fins de recherche uniquement

# Anticorps Polyclonal de lapin anti-Sortilin



Numéro de catalogue: 12369-1-AP

Phare

10 Publications

## Informations de base

Numéro de catalogue:  
12369-1-AP

Taille:  
150ul, Concentration: 260 µg/ml by  
Nanodrop;

Hôte:  
Lapin

Isotype:  
IgG

Immunogen Catalog Number:  
AG2997

Numéro d'acquisition GenBank:  
BC023542

Identification du gène (NCBI):  
6272

Nom complet:  
sortilin 1

MW calculé:  
831 aa, 92 kDa

MW observés:  
100-110 kDa

Méthode de purification:  
Purification par affinité contre  
l'antigène

Dilutions recommandées:  
WB 1:2000-1:16000  
IP 0.5-4.0 ug for IP and 1:500-1:1000  
for WB  
IHC 1:500-1:2000  
IF 1:200-1:800

## Applications

Applications testées:  
FC, IF, IHC, IP, WB, ELISA

Demandes citées:  
CoIP, IF, IHC, WB

Spécificité de l'espèce:  
Humain, rat, souris

Espèces citées:  
Humain, souris

Contrôles positifs:

WB : tissu cérébral de souris, tissu cérébral de rat, tissu  
cérébral humain

IP : tissu cérébral de rat,

IHC : tissu cérébral de souris, tissu cérébral de rat, tissu  
cérébral humain

IF : tissu cérébral de souris,

**Remarque-IHC: il est suggéré de démasquer  
l'antigène avec un tampon de TE buffer pH  
9,0; (\*) À défaut, le démasquage de  
l'antigène peut être effectué avec un  
tampon citrate pH 6,0.**

## Informations générales

Sortilin 1 (SORT1), is a trans-Golgi network (TGN) transmembrane protein and is a member of the Vps10p domain receptor family. SORT1 binds a number of unrelated ligands that participate in a wide range of cellular processes. It functions as a sorting receptor in the Golgi compartment and as a clearance receptor on the cell surface.

## Publications notables

Autrice	Pubmed ID	Journal	Application
Hiroyuki Obata	36185767	Exp Ther Med	IF
Keiji Uchiyama	28665987	PLoS Pathog	WB,IF
Noah R Johnson	29203673	Proc Natl Acad Sci U S A	WB

## Stockage

Stockage:  
Stocker à -20°C. Stable pendant un an après l'expédition.

Tampon de stockage:  
PBS avec azoture de sodium à 0,02 % et glycérol à 50 % pH 7,3  
L'aliquotage n'est pas nécessaire pour le stockage à -20C

\*\*\* Les 20ul contiennent 0,1% de BSA.

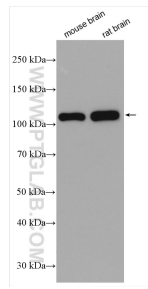
For technical support and original validation data for this product please contact:

T: 1 (888) 4PTGLAB (1-888-478-4522) (toll free  
in USA), or 1(312) 455-8498 (outside USA)

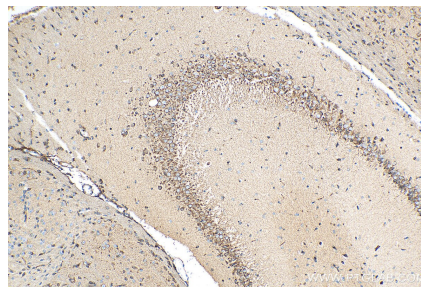
E: proteintech@ptglab.com  
W: ptglab.com

This product is exclusively available under Proteintech Group brand and is not available to purchase from any other manufacturer.

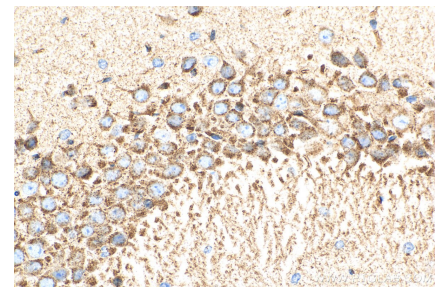
## Données de validation sélectionnées



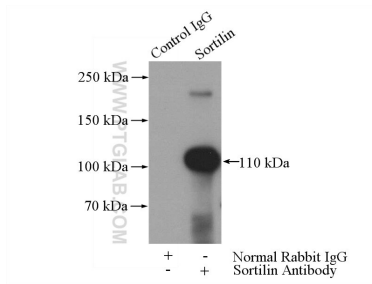
Various lysates were subjected to SDS PAGE followed by western blot with 12369-1-AP (Sortilin antibody) at dilution of 1:8000 incubated at room temperature for 1.5 hours.



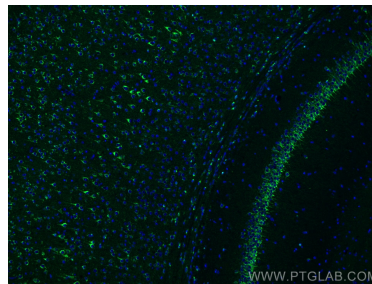
Immunohistochemical analysis of paraffin-embedded mouse brain tissue slide using 12369-1-AP (Sortilin antibody) at dilution of 1:1000 (under 10x lens). Heat mediated antigen retrieval with Tris-EDTA buffer (pH 9.0).



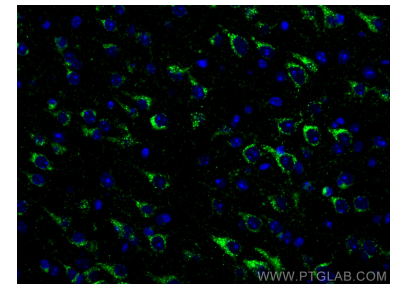
Immunohistochemical analysis of paraffin-embedded mouse brain tissue slide using 12369-1-AP (Sortilin antibody) at dilution of 1:1000 (under 40x lens). Heat mediated antigen retrieval with Tris-EDTA buffer (pH 9.0).



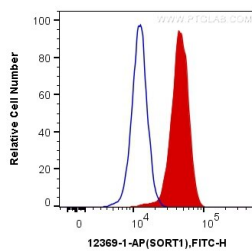
IP Result of anti-Sortilin (IP:12369-1-AP, 4ug; Detection:12369-1-AP 1:500) with rat brain tissue lysate 4000ug.



Immunofluorescent analysis of (4% PFA) fixed mouse brain tissue using Sortilin antibody (12369-1-AP) at dilution of 1:400 and CoraLite@488-Conjugated AffiniPure Goat Anti-Rabbit IgG(H+L).



Immunofluorescent analysis of (4% PFA) fixed mouse brain tissue using Sortilin antibody (12369-1-AP) at dilution of 1:400 and CoraLite@488-Conjugated AffiniPure Goat Anti-Rabbit IgG(H+L).



$1 \times 10^6$  Neuro-2a cells were intracellularly stained with 0.2 ug Anti-Human Sortilin (12369-1-AP) and CoraLite@488-Conjugated AffiniPure Goat Anti-Rabbit IgG(H+L) at dilution 1:1000 (red), or 0.2 ug Control Antibody. Cells were fixed with 4% PFA and permeabilized with Flow Cytometry Perm Buffer (PF00011-C).