

À des fins de recherche uniquement

# Anticorps Polyclonal de lapin anti-MAT1A/MAT2A



Numéro de catalogue: 12395-1-AP

7 Publications

## Informations de base

Numéro de catalogue: 12395-1-AP	Numéro d'acquisition GenBank: BC018359	Méthode de purification: Purification par affinité contre l'antigène
Taille: 150ul, Concentration: 400 µg/ml by Nanodrop and 200 µg/ml by Bradford method using BSA as the standard;	Identification du gène (NCBI): 4143	Dilutions recommandées: WB 1:1000-1:4000 IHC 1:50-1:500
Hôte: Lapin	Nom complet: methionine adenosyltransferase I, alpha	
Isotype: IgG	MW calculé 395 aa, 44 kDa	
Immunogen Catalog Number: AG3076	MW observés: 44-55 kDa	

## Applications

### Applications testées:

IHC, WB, ELISA

### Demandes citées:

IHC, WB

### Spécificité de l'espèce:

Humain, rat, souris, arabidopsis

### Espèces citées:

Humain, rat, souris

**Remarque-IHC: il est suggéré de démasquer l'antigène avec un tampon de TE buffer pH 9,0; (\*) À défaut, 'le démasquage de l'antigène peut être effectué avec un tampon citrate pH 6,0.**

### Contrôles positifs:

WB : tissu hépatique de souris, cellules HCT 116, cellules HepG2, tissu hépatique de rat, tissu végétal entier d'arabidopsis

IHC : tissu hépatique de souris,

## Informations générales

Methionine adenosyltransferase (MAT) is the enzyme that catalyzes the synthesis of S-adenosylmethionine (AdoMet), the main donor of methyl groups in the cell. In mammals MAT is encoded by two different genes, MAT1A and MAT2A. MAT1A is expressed only in the mature liver whereas fetal hepatocytes, extrahepatic tissues and liver cancer cells express MAT2A. This antibody was raised against the full length of human MAT1A and can recognize both of MAT1A and MAT2A. Western blot analysis using this antibody detected a single band around 44-50 kDa in liver.

## Publications notables

Autrice	Pubmed ID	Journal	Application
Vitvitsky Victor V	23707637	Mech Ageing Dev	WB
Minjian Chen	24449424	Toxicol Sci	WB
Jihyun An	29448301	J Surg Oncol	IHC

## Stockage

### Stockage:

Stocker à -20°C. Stable pendant un an après l'expédition.

### Tampon de stockage:

PBS avec azoture de sodium à 0,02 % et glycérol à 50 % pH 7,3

L'aliquotage n'est pas nécessaire pour le stockage à -20C

\*\*\* Les 20ul contiennent 0,1% de BSA.

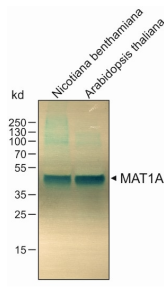
For technical support and original validation data for this product please contact:

T: 1 (888) 4PTGLAB (1-888-478-4522) (toll free in USA), or 1(312) 455-8498 (outside USA)

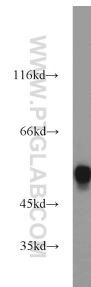
E: proteintech@ptglab.com  
W: ptglab.com

This product is exclusively available under Proteintech Group brand and is not available to purchase from any other manufacturer.

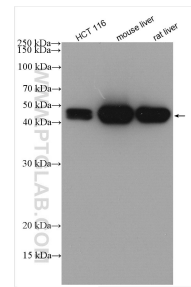
## Données de validation sélectionnées



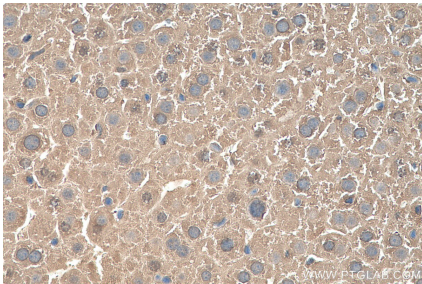
WB result of MAT1A antibody (12395-1-AP, 1:5000) with plant leaf tissue samples.



mouse liver tissue were subjected to SDS PAGE followed by western blot with 12395-1-AP (MAT1A antibody) at dilution of 1:1000 incubated at room temperature for 1.5 hours.



Various lysates were subjected to SDS PAGE followed by western blot with 12395-1-AP (MAT1A/MAT2A antibody) at dilution of 1:10000 incubated at room temperature for 1.5 hours.



Immunohistochemical analysis of paraffin-embedded mouse liver tissue slide using 12395-1-AP (MAT1A/MAT2A antibody) at dilution of 1:200 (under 40x lens). Heat mediated antigen retrieval with Tris-EDTA buffer (pH 9.0).