

À des fins de recherche uniquement

Anticorps Polyclonal de lapin anti-LBR



Numéro de catalogue: 12398-1-AP

10 Publications

Informations de base

Numéro de catalogue:
12398-1-AP

Taille:
150ul, Concentration: 500 µg/ml by Nanodrop and 347 µg/ml by Bradford method using BSA as the standard;

Hôte:
Lapin

Isotype:
IgG

Immunogen Catalog Number:
AG3088

Numéro d'acquisition GenBank:
BC020079

Identification du gène (NCBI):
3930

Nom complet:
lamin B receptor

MW calculé
615 aa, 71 kDa

MW observés:
58 kDa

Méthode de purification:
Purification par affinité contre l'antigène

Dilutions recommandées:
WB 1:1000-1:4000
IP 0.5-4.0 ug for IP and 1:500-1:1000 for WB
IF 1:25-1:100

Applications

Applications testées:
FC, IF, IP, WB, ELISA

Demandes citées:
CoIP, IF, IP, WB

Spécificité de l'espèce:
Humain, rat, souris

Espèces citées:
Humain, souris

Contrôles positifs:

WB : cellules A375, cellules C2C12, tissu cérébral humain

IP : cellules A375,

IF : cellules HeLa, cellules C6, cellules HepG2

Informations générales

Lamin-B receptor (LBR) belongs to the ERG4/ERG24 family. LBR is a 58-kDa integral protein of the nuclear envelope inner membrane and anchors the lamina and the heterochromatin to the inner nuclear membrane. LBR may mediate the interaction between chromatin and lamin B. Mutations of the LBR gene have been associated with autosomal recessive HEM/Greenberg skeletal dysplasia.

Publications notables

Autrice	Pubmed ID	Journal	Application
Qiong Wu	35698159	J Exp Clin Cancer Res	WB
Aurelio Reyes	32735630	PLoS Genet	WB
Zhe Xu	35809814	Transpl Immunol	WB

Stockage

Stockage:

Stocker à -20°C. Stable pendant un an après l'expédition.

Tampon de stockage:

PBS avec azoture de sodium à 0,02 % et glycérol à 50 % pH 7,3

L'aliquotage n'est pas nécessaire pour le stockage à -20C

*** Les 20ul contiennent 0,1% de BSA.

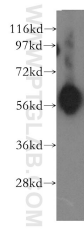
For technical support and original validation data for this product please contact:

T: 1 (888) 4PTGLAB (1-888-478-4522) (toll free in USA), or 1(312) 455-8498 (outside USA)

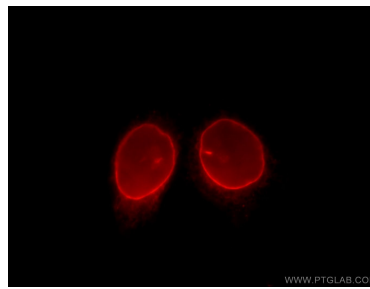
E: proteintech@ptglab.com
W: ptglab.com

This product is exclusively available under Proteintech Group brand and is not available to purchase from any other manufacturer.

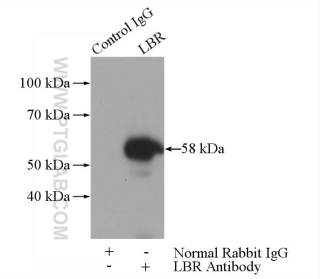
Données de validation sélectionnées



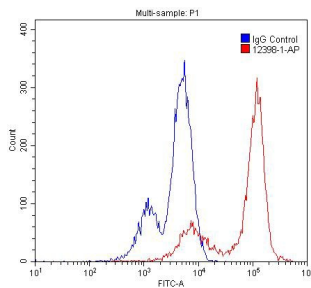
A375 cells were subjected to SDS PAGE followed by western blot with 12398-1-AP (LBR antibody) at dilution of 1:500 incubated at room temperature for 1.5 hours.



Immunofluorescent analysis of HeLa cells, using LBR antibody 12398-1-AP at 1:25 dilution and Rhodamine-labeled goat anti-rabbit IgG (red).



IP Result of anti-LBR (IP:12398-1-AP, 3ug; Detection:12398-1-AP 1:500) with A375 cells lysate 3200ug.



1×10^6 Jurkat cells were stained with 0.2ug LBR antibody (12398-1-AP, red) and control antibody (blue). Alexa Fluor 488-conjugated AffiniPure Goat Anti-Rabbit IgG(H+L) with dilution 1:1500. Cells were fixed with 4% PFA and permeabilized with 0.1% Triton X-100.