

À des fins de recherche uniquement

# Anticorps Polyclonal de lapin anti-MAGEB1



Numéro de catalogue: 12400-1-AP

## Informations de base

Numéro de catalogue:  
12400-1-AP

Taille:  
150ul, Concentration: 600 µg/ml by  
Nanodrop and 340 µg/ml by Bradford  
method using BSA as the standard;

Hôte:  
Lapin

Isotype:  
IgG

Immunogen Catalog Number:  
AG3094

Numéro d'acquisition GenBank:  
BC013772

Identification du gène (NCBI):  
4112

Nom complet:  
melanoma antigen family B, 1

MW calculé  
347 aa, 39 kDa

MW observés:  
43-45 kDa

Méthode de purification:  
Purification par affinité contre  
l'antigène

Dilutions recommandées:  
WB 1:500-1:2000  
IP 0.5-4.0 ug for IP and 1:1000-1:4000  
for WB  
IF 1:10-1:100

## Applications

Applications testées:  
IF, IP, WB, ELISA

Spécificité de l'espèce:  
Humain

Contrôles positifs:

WB : cellules HepG2, cellules A375

IP : cellules HepG2,

IF : cellules HepG2, cellules A375

## Informations générales

MAGEB1, also named as MAGEL1, MAGEXP, DAM10 and CT3.1, is a member of the MAGEB gene family. MAGE genes encode for tumor-rejection antigens and are expressed in tumors of different histologic types and Testis/placenta, but not in other normal tissues. The MW of MAGEB1 is about 40-45kd.

## Stockage

Stockage:

Stocker à -20°C. Stable pendant un an après l'expédition.

Tampon de stockage:

PBS avec azoture de sodium à 0,02 % et glycérol à 50 % pH 7,3

L'aliquotage n'est pas nécessaire pour le stockage à -20C

**\*\*\* Les 20ul contiennent 0,1% de BSA.**

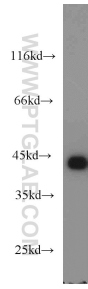
For technical support and original validation data for this product please contact:

T: 1 (888) 4PTGLAB (1-888-478-4522) (toll free  
in USA), or 1(312) 455-8498 (outside USA)

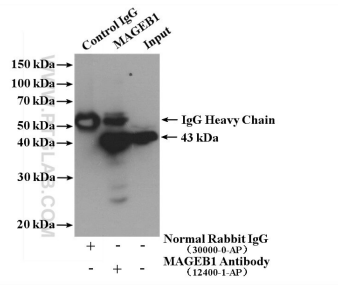
E: proteintech@ptglab.com  
W: ptglab.com

This product is exclusively available under Proteintech Group brand and is not available to purchase from any other manufacturer.

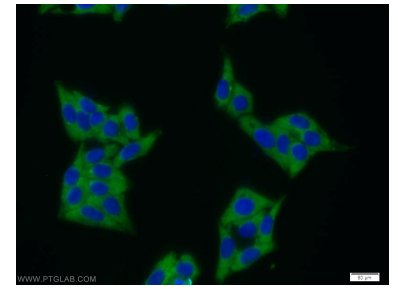
## Données de validation sélectionnées



HepG2 cells were subjected to SDS PAGE followed by western blot with 12400-1-AP (MAGEB1 antibody) at dilution of 1:2000 incubated at room temperature for 1.5 hours.



IP result of anti-MAGEB1 (IP:12400-1-AP, 4ug; Detection:12400-1-AP 1:2000) with HepG2 cells lysate 3360 ug.



Immunofluorescent analysis of HepG2 cells using 12400-1-AP (MAGEB1 antibody) at dilution of 1:25 and Alexa Fluor 488-conjugated AffiniPure Goat Anti-Rabbit IgG(H+L).