

À des fins de recherche uniquement

# Anticorps Polyclonal de lapin anti-BBS10



Numéro de catalogue: 12421-2-AP

Phare

3 Publications

## Informations de base

Numéro de catalogue:  
12421-2-AP

Taille:  
150ul, Concentration: 500 µg/ml by  
Nanodrop and 287 µg/ml by Bradford  
method using BSA as the standard;

Hôte:  
Lapin

Isotype:  
IgG

Immunogen Catalog Number:  
AG3073

Numéro d'acquisition GenBank:  
BC013795

Identification du gène (NCBI):  
79738

Nom complet:  
Bardet-Biedl syndrome 10

MW calculé  
81 kDa

MW observés:  
81 kDa

Méthode de purification:  
Purification par affinité contre  
l'antigène

Dilutions recommandées:  
WB 1:500-1:1000  
IF 1:20-1:200

## Applications

Applications testées:  
IF, WB, ELISA

Demandes citées:  
IF, WB

Spécificité de l'espèce:  
Humain

Espèces citées:  
Humain, souris

Contrôles positifs:

WB : cellules HepG2, cellules A549, cellules MCF-7

IF : cellules hTERT-RPE1,

## Informations générales

BBS10, also named as C12orf58, belongs to the TCP-1 chaperonin family. It is probable molecular chaperone. Assists the folding of proteins upon ATP hydrolysis. As part of the BBS/CCT complex, BBS10 may play a role in the assembly of BBSome, a complex involved in ciliogenesis regulating transports vesicles to the cilia. Involved in adipogenic differentiation. (PMID:20080638,19190184) Defects in BBS10 are the cause of Bardet-Biedl syndrome type 10 (BBS10).

## Publications notables

Autrice	Pubmed ID	Journal	Application
Noëlle Cognard	26273430	Cilia	WB
Seo Seongjin S	20080638	Proc Natl Acad Sci U S A	WB,IF
Marion Vincent V	19190184	Proc Natl Acad Sci U S A	WB,IF

## Stockage

Stockage:

Stocker à -20°C. Stable pendant un an après l'expédition.

Tampon de stockage:

PBS avec azoture de sodium à 0,02 % et glycérol à 50 % pH 7,3

L'aliquotage n'est pas nécessaire pour le stockage à -20C

\*\*\* Les 20ul contiennent 0,1% de BSA.

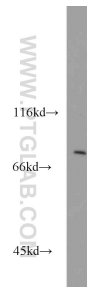
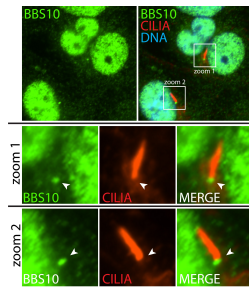
For technical support and original validation data for this product please contact:

T: 1 (888) 4PTGLAB (1-888-478-4522) (toll free  
in USA), or 1(312) 455-8498 (outside USA)

E: proteintech@ptglab.com  
W: ptglab.com

This product is exclusively available under Proteintech Group brand and is not available to purchase from any other manufacturer.

## Données de validation sélectionnées



IF result (nuclear and the base of cilium stain) of anti-BBS10 (12421-2-AP; 1:50) with hTERT-RPE1 cell (PFA fixed) by Dr. Moshe Kim.

HepG2 cells were subjected to SDS PAGE followed by western blot with 12421-2-AP (BBS10 antibody) at dilution of 1:800 incubated at room temperature for 1.5 hours.