

À des fins de recherche uniquement

Anticorps Polyclonal de lapin anti-SLC20A1



Numéro de catalogue: 12423-1-AP

9 Publications

Informations de base

Numéro de catalogue:
12423-1-AP

Taille:
150ul, Concentration: 1000 µg/ml by Nanodrop and 613 µg/ml by Bradford method using BSA as the standard;

Hôte:
Lapin

Isotype:
IgG

Immunogen Catalog Number:
AG3084

Numéro d'acquisition GenBank:
BC019944

Identification du gène (NCBI):
6574

Nom complet:
solute carrier family 20 (phosphate transporter), member 1

MW calculé:
679 aa, 74 kDa

MW observés:
85 kDa

Méthode de purification:
Purification par affinité contre l'antigène

Dilutions recommandées:
WB 1:500-1:1000
IP 0.5-4.0 ug for IP and 1:500-1:1000 for WB
IHC 1:50-1:500

Applications

Applications testées:
IHC, IP, WB, ELISA

Demandes citées:
FC, IF, IHC, WB

Spécificité de l'espèce:
Humain

Espèces citées:
Humain, poisson-zèbre, rat, souris

Remarque-IHC: il est suggéré de démasquer l'antigène avec un tampon de TE buffer pH 9,0; (*) À défaut, 'le démasquage de l'antigène peut être effectué avec un tampon citrate pH 6,0.

Contrôles positifs:

WB : cellules HEK-293, cellules HeLa, cellules Jurkat, cellules K-562, tissu rénal humain

IP : cellules HEK-293,

IHC : tissu hépatique humain, tissu de cancer du sein humain, tissu de lymphome humain

Informations générales

SLC20A1 (also known as PiT1) is a high-affinity sodium-dependent phosphate (Pi) import protein. It is widely expressed and plays a fundamental housekeeping role in phosphate transport, such as absorbing phosphate from interstitial fluid for normal cellular functions. SLC20A1 is involved in cell proliferation, tumor growth and cell signaling independently of its transport function. SLC20A1 also functions as a retroviral receptor, causing human cells to be susceptible to infection by gibbon ape leukemia virus, simian sarcoma-associated virus, feline leukemia virus subgroup B, and 10A1 murine leukemia virus.

Publications notables

Autrice	Pubmed ID	Journal	Application
Nhung Thi Nguyen	33095057	Am J Physiol Heart Circ Physiol	WB
Ping Wang	33439323	Calcif Tissue Int	WB
Nina Bon	29233890	J Biol Chem	WB

Stockage

Stockage:

Stocker à -20°C. Stable pendant un an après l'expédition.

Tampon de stockage:

PBS avec azoture de sodium à 0,02 % et glycérol à 50 % pH 7,3

L'aliquotage n'est pas nécessaire pour le stockage à -20C

*** Les 20ul contiennent 0,1% de BSA.

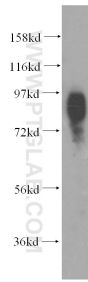
For technical support and original validation data for this product please contact:

T: 1 (888) 4PTGLAB (1-888-478-4522) (toll free in USA), or 1(312) 455-8498 (outside USA)

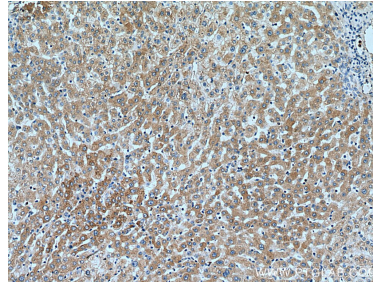
E: proteintech@ptglab.com
W: ptglab.com

This product is exclusively available under Proteintech Group brand and is not available to purchase from any other manufacturer.

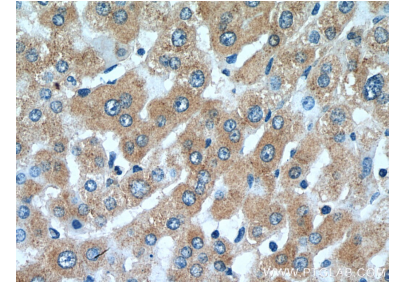
Données de validation sélectionnées



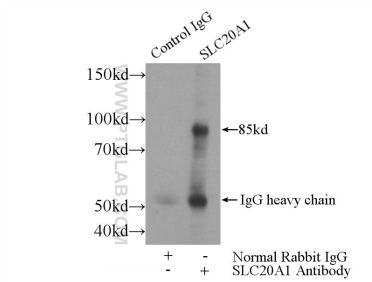
HEK-293 cells were subjected to SDS PAGE followed by western blot with 12423-1-AP (SLC20A1 antibody) at dilution of 1:500 incubated at room temperature for 1.5 hours.



Immunohistochemical analysis of paraffin-embedded human liver tissue slide using 12423-1-AP (SLC20A1 antibody) at dilution of 1:200 (under 10x lens). Heat mediated antigen retrieval with Tris-EDTA buffer (pH 9.0).



Immunohistochemical analysis of paraffin-embedded human liver tissue slide using 12423-1-AP (SLC20A1 antibody) at dilution of 1:200 (under 40x lens). Heat mediated antigen retrieval with Tris-EDTA buffer (pH 9.0).



IP Result of anti-SLC20A1 (IP:12423-1-AP, 4ug; Detection:12423-1-AP 1:500) with HEK-293 cells lysate 2800ug.