

À des fins de recherche uniquement

# Anticorps Polyclonal de lapin anti-HOMER1



Numéro de catalogue: 12433-1-AP

Phare

14 Publications

## Informations de base

Numéro de catalogue:  
12433-1-AP

Taille:  
150ul, Concentration: 800 µg/ml by Nanodrop and 460 µg/ml by Bradford method using BSA as the standard;

Hôte:  
Lapin

Isotype:  
IgG

Immunogen Catalog Number:  
AG3109

Numéro d'acquisition GenBank:  
BC015502

Identification du gène (NCBI):  
9456  
Nom complet:  
homer homolog 1 (Drosophila)

MW calculé  
40 kDa

MW observés:  
46-48 kDa

Méthode de purification:  
Purification par affinité contre l'antigène

Dilutions recommandées:  
WB 1:1000-1:5000  
IP 0.5-4.0 ug for IP and 1:500-1:2000 for WB  
IHC 1:50-1:500  
IF 1:50-1:500

## Applications

Applications testées:  
FC, IF, IHC, IP, WB, ELISA

Demandes citées:  
IF, IHC, WB

Spécificité de l'espèce:  
Humain, rat, souris

Espèces citées:  
rat, souris

**Remarque-IHC: il est suggéré de démasquer l'antigène avec un tampon de TE buffer pH 9,0; (\*) A défaut, 'le démasquage de l'antigène peut être 'effectué avec un tampon citrate pH 6,0.**

Contrôles positifs:

WB : tissu cérébral de rat, cerveau humain/de souris, tissu cérébral humain

IP : tissu cérébral humain foetal,

IHC : tissu de gliome humain, tissu cérébral de rat, tissu cérébral de souris, tissu pancréatique humain

IF : cellules SH-SY5Y, cellules MCF-7, tissu cérébral de rat

## Informations générales

Human HOMER1, also named as SYN47, belongs to the Homer family. Human HOMER1 has some isoforms: HOMER1a, HOMER1b, HOMER1c, HOMER1e and HOMER1h. Mouse Homer1 also named as Vesl-1 and it has some isoforms: Vesl-1l, Vesl-1m, Vesl-1s, Homer1b, and Homer1d. HOMER1 is a postsynaptic density scaffolding protein. It is a neuronal immediate-early gene (IEG) that is enriched at excitatory synapses and binds mGluRs. In WB, the MW of HOMER1 is about 46-50kd, 40-43kd and 20-26kd.

## Publications notables

Autrice	Pubmed ID	Journal	Application
Qianli Zhang	36313806	Cell Rep Methods	IF
Lisa Y So	33031871	Behav Brain Res	WB
Chuyu Chen	33006315	Elife	WB

## Stockage

Stockage:

Stocker à -20°C. Stable pendant un an après l'expédition.

Tampon de stockage:

PBS avec azoture de sodium à 0,02 % et glycérol à 50 % pH 7,3

L'aliquotage n'est pas nécessaire pour le stockage à -20C

\*\*\* Les 20ul contiennent 0,1% de BSA.

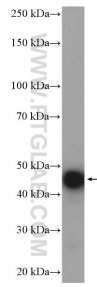
For technical support and original validation data for this product please contact:

T: 1 (888) 4PTGLAB (1-888-478-4522) (toll free in USA), or 1(312) 455-8498 (outside USA)

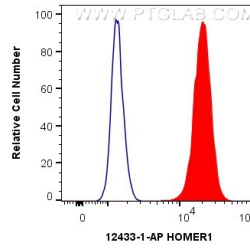
E: proteintech@ptglab.com  
W: ptglab.com

This product is exclusively available under Proteintech Group brand and is not available to purchase from any other manufacturer.

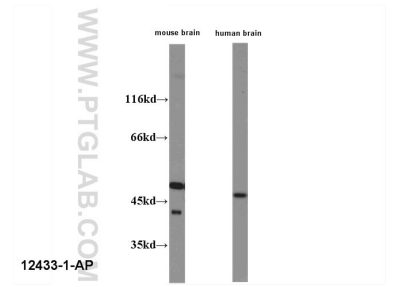
## Données de validation sélectionnées



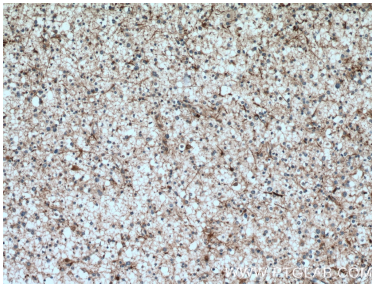
rat brain tissue were subjected to SDS PAGE followed by western blot with 12433-1-AP (HOMER1 antibody) at dilution of 1:5000 incubated at room temperature for 1 hour.



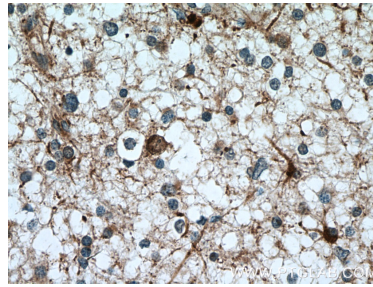
$1 \times 10^6$  SH-SY5Y cells were intracellularly stained with 0.4 ug Anti-Human HOMER1 (12433-1-AP) and CoraLite®488-Conjugated AffiniPure Goat Anti-Rabbit IgG(H+L) at dilution 1:1000 (red), or 0.4 ug Isotype Control. Cells were fixed with 4% PFA and permeabilized with Flow Cytometry Perm Buffer (PF00011-C).



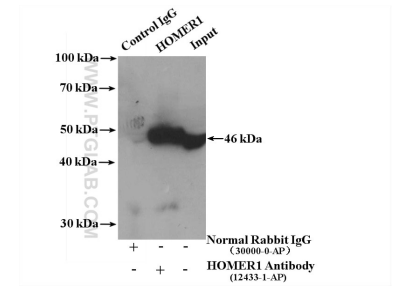
WB result of anti-HOMER1 (12433-1-ap) with mouse brain lysate and human brain lysate.



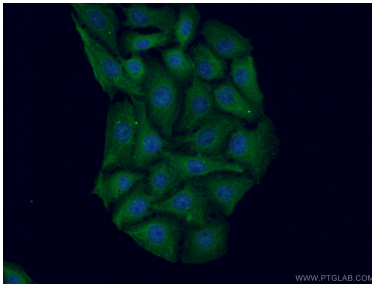
Immunohistochemical analysis of paraffin-embedded human gliomas tissue slide using 12433-1-AP (HOMER1 antibody) at dilution of 1:200 (under 10x lens. Heat mediated antigen retrieval with Tris-EDTA buffer (pH 9.0).



Immunohistochemical analysis of paraffin-embedded human gliomas tissue slide using 12433-1-AP (HOMER1 antibody) at dilution of 1:200 (under 40x lens. Heat mediated antigen retrieval with Tris-EDTA buffer (pH 9.0).



IP result of anti-HOMER1 (IP:12433-1-AP, 4ug; Detection:12433-1-AP 1:1000) with fetal human brain tissue lysate 4000 ug.



Immunofluorescent analysis of (-20°C Ethanol) fixed SH-SY5Y cells using 12433-1-AP (HOMER1 antibody) at dilution of 1:50 and Alexa Fluor 488-Conjugated AffiniPure Goat Anti-Rabbit IgG(H+L).