

À des fins de recherche uniquement

Anticorps Polyclonal de lapin anti-CREST



Numéro de catalogue: 12439-1-AP

Phare

10 Publications

Informations de base

Numéro de catalogue:

12439-1-AP

Taille:

150ul, Concentration: 600 µg/ml by Nanodrop;

Hôte:

Lapin

Isotype:

IgG

Immunogen Catalog Number:

AG3119

Numéro d'acquisition GenBank:

BC034494

Identification du gène (NCBI):

26039

Nom complet:

synovial sarcoma translocation gene on chromosome 18-like 1

MW calculé

396 aa, 43 kDa

MW observés:

55 kDa

Méthode de purification:

Purification par affinité contre l'antigène

Dilutions recommandées:

WB 1:500-1:3000

IP 0.5-4.0 ug for IP and 1:150-1:600 for WB

IHC 1:20-1:200

IF 1:50-1:500

Applications

Applications testées:

IF, IHC, IP, WB, ELISA

Demandes citées:

ChIP, CoIP, IF, IHC, WB

Spécificité de l'espèce:

Humain, rat, souris

Espèces citées:

Drosophile, Humain, rat, souris

Contrôles positifs:

WB : cellules K-562, cellules COLO 320, cellules HeLa, tissu cardiaque humain, tissu cérébral de souris

IP : cellules HeLa, tissu cérébral de souris

IHC : tissu de cancer du sein humain, tissu cérébral humain

IF : cellules HeLa, tissu testiculaire de souris

Remarque-IHC: il est suggéré de démasquer l'antigène avec un tampon de TE buffer pH 9,0; (*) À défaut, 'le démasquage de l'antigène peut être 'effectué avec un tampon citrate pH 6,0.

Informations générales

CREST, also named as SS18-like 1(SS18L1) is a transcriptional activator that is required for calcium-dependent dendritic growth and branching in cortical neurons. It's also a nuclear protein interacts with CREB-binding protein and expressed in the developing brain. It helps regulate neuronal morphogenesis in calcium-dependent manner. The N-terminal domain of SS18L1 is required for suppressing transactivation in the basal state, while the C-terminal domain is required for calcium-induced transactivation. It's part of the CREST-BRG1 complex, a multiprotein complex that regulates promoter activation by orchestrating a calcium-dependent release of a repressor complex and a recruitment of an activator complex. This complex also binds to the NR2B promoter, and activity-dependent induction of NR2B expression involves a release of HDAC1 and recruitment of CREBBP. The calculated molecular weight of CREST is about 43 kDa, but the modified of CREST protein is 55 kDa (PMID: 25888396). CREST exists some isoforms with calculated MV 43, 40, 33 and 29 kDa.

Publications notables

Autrice	Pubmed ID	Journal	Application
Yasaman Alaghand	30228227	J Neurosci	WB,IF
Colin Kenny	34071089	Cancers (Basel)	ChIP
Staahl Brett T BT	23785148	J Neurosci	IF

Stockage

Stockage:

Stocker à -20°C. Stable pendant un an après l'expédition.

Tampon de stockage:

PBS avec azoture de sodium à 0,02 % et glycérol à 50 % pH 7,3

L'aliquotage n'est pas nécessaire pour le stockage à -20C

*** Les 20ul contiennent 0,1% de BSA.

For technical support and original validation data for this product please contact:

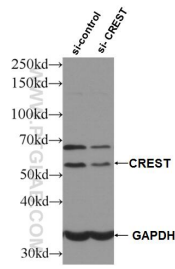
T: 1 (888) 4PTGLAB (1-888-478-4522) (toll free in USA), or 1(312) 455-8498 (outside USA)

E: proteintech@ptglab.com

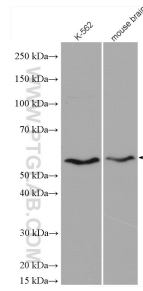
W: ptglab.com

This product is exclusively available under Proteintech Group brand and is not available to purchase from any other manufacturer.

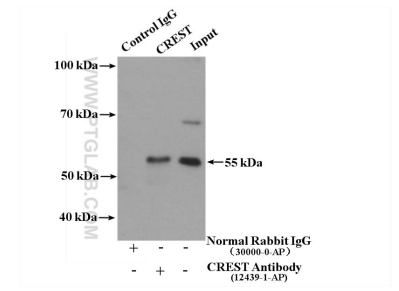
Données de validation sélectionnées



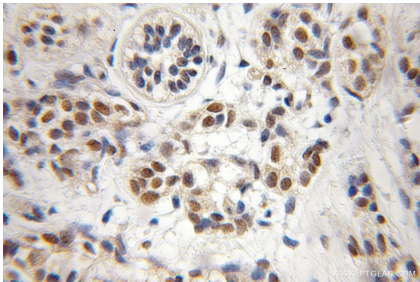
WB result of CREST antibody (12439-1-AP; 1:4000; incubated at room temperature for 1.5 hours) with sh-Control and sh-CREST transfected HeLa cells.



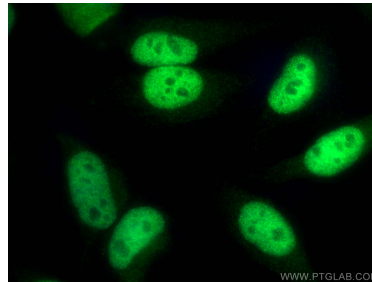
Various lysates were subjected to SDS PAGE followed by western blot with 12439-1-AP (CREST antibody) at dilution of 1:1500 incubated at room temperature for 1.5 hours.



IP result of anti-CREST (IP:12439-1-AP, 4ug; Detection:12439-1-AP 1:300) with HeLa cells lysate 3000 ug.



Immunohistochemical analysis of paraffin-embedded human breast cancer using 12439-1-AP (CREST antibody) at dilution of 1:50 (under 10x lens).



Immunofluorescent analysis of (4% PFA) fixed HeLa cells using CREST antibody (12439-1-AP) at dilution of 1:200 and CoraLite®488-Conjugated AffiniPure Goat Anti-Rabbit IgG(H+L).