

À des fins de recherche uniquement

# Anticorps Polyclonal de lapin anti-NDUFS1



Numéro de catalogue: 12444-1-AP

Phare

63 Publications

## Informations de base

Numéro de catalogue:

12444-1-AP

Taille:

150ul, Concentration: 450 µg/ml by Nanodrop;

Hôte:

Lapin

Isotype:

IgG

Immunogen Catalog Number:

AG3135

Numéro d'acquisition GenBank:

BC030833

Identification du gène (NCBI):

4719

Nom complet:

NADH dehydrogenase (ubiquinone) Fe-S protein 1, 75kDa (NADH-coenzyme Q reductase)

MW calculé

727 aa, 79 kDa

MW observés:

74-81 kDa

Méthode de purification:

Purification par affinité contre l'antigène

Dilutions recommandées:

WB 1:2000-1:10000

IP 0.5-4.0 µg for IP and 1:500-1:1000 for WB

IHC 1:250-1:1000

IF 1:50-1:500

## Applications

Applications testées:

IF, IHC, IP, WB, ELISA

Demandes citées:

CoIP, IF, IHC, WB

Spécificité de l'espèce:

Humain, rat, souris

Espèces citées:

Drosophile, Humain, poisson-zèbre, rat, souris

**Remarque-IHC: il est suggéré de démasquer l'antigène avec un tampon de TE buffer pH 9,0; (\*) A défaut, 'le démasquage de l'antigène peut être effectué avec un tampon citrate pH 6,0.**

Contrôles positifs:

WB : tissu rénal de souris, cellules A549, cellules HEK-293, cellules HeLa, tissu hépatique de souris, tissu rénal de rat

IP : tissu pulmonaire de souris,

IHC : tissu de cancer du foie humain,

IF : cellules HepG2, cellules HeLa

## Informations générales

The multisubunit NADH:ubiquinone oxidoreductase (75 kDa subunit, mitochondrial)(NDUFS1) is the first enzyme complex in the electron transport chain of mitochondria. It is also named as Complex I-75kD. By use of chaotropic agents, complex I can be fragmented into 3 different fractions: a flavoprotein fraction, an iron-sulfur protein (IP) fraction, and a hydrophobic protein (HP) fraction. NDUFS1 is the largest subunit of complex I and it is a component of the iron-sulfur (IP) fragment of the enzyme. NDUFS1 has some isoforms with the molecular mass of 68-81 kDa.

## Publications notables

Autrice	Pubmed ID	Journal	Application
Shao-Ming Shen	26415504	EMBO Rep	WB
Yang Ni	31557978	Cells	WB
Rufeng Zhang	31530015	FASEB J	WB

## Stockage

Stockage:

Stocker à -20°C. Stable pendant un an après l'expédition.

Tampon de stockage:

PBS avec azoture de sodium à 0,02 % et glycérol à 50 % pH 7,3

L'aliquotage n'est pas nécessaire pour le stockage à -20C

\*\*\* Les 20ul contiennent 0,1% de BSA.

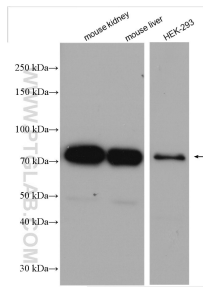
For technical support and original validation data for this product please contact:

T: 1 (888) 4PTGLAB (1-888-478-4522) (toll free in USA), or 1(312) 455-8498 (outside USA)

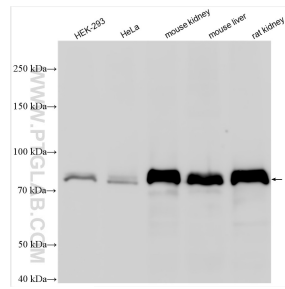
E: proteintech@ptglab.com  
W: ptglab.com

This product is exclusively available under Proteintech Group brand and is not available to purchase from any other manufacturer.

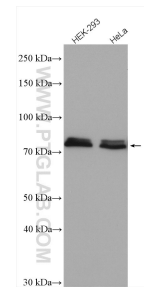
## Données de validation sélectionnées



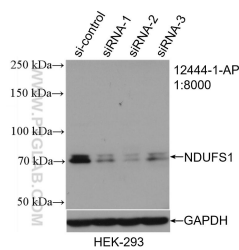
Various lysates were subjected to SDS PAGE followed by western blot with 12444-1-AP (NDUFS1 antibody) at dilution of 1:5000 incubated at room temperature for 1.5 hours.



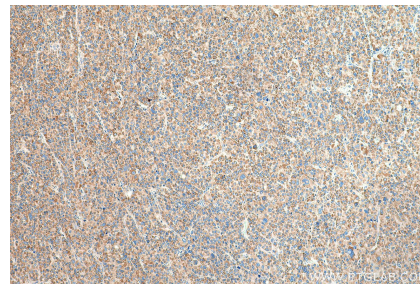
Various lysates were subjected to SDS PAGE followed by western blot with 12444-1-AP (NDUFS1 antibody) at dilution of 1:10000 incubated at room temperature for 1.5 hours.



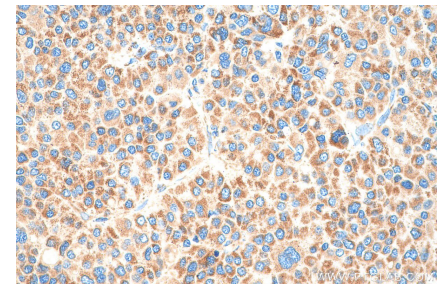
Various lysates were subjected to SDS PAGE followed by western blot with 12444-1-AP (NDUFS1 antibody) at dilution of 1:3000 incubated at room temperature for 1.5 hours.



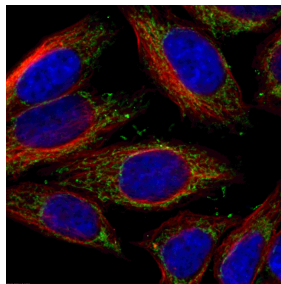
WB result of NDUFS1 antibody (12444-1-AP; 1:8000; incubated at room temperature for 1.5 hours) with sh-Control and sh-NDUFS1 transfected HEK-293 cells.



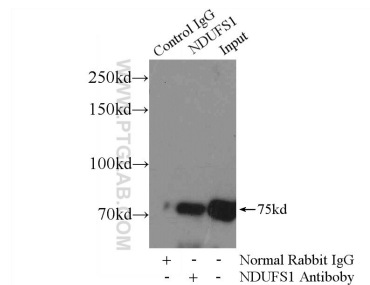
Immunohistochemical analysis of paraffin-embedded human liver cancer tissue slide using 12444-1-AP (NDUFS1 antibody) at dilution of 1:500 (under 10x lens). Heat mediated antigen retrieval with Tris-EDTA buffer (pH 9.0).



Immunohistochemical analysis of paraffin-embedded human liver cancer tissue slide using 12444-1-AP (NDUFS1 antibody) at dilution of 1:500 (under 40x lens). Heat mediated antigen retrieval with Tris-EDTA buffer (pH 9.0).



Immunofluorescent analysis of (4% PFA) fixed HeLa cells stained for NDUFS1 rabbit pAb (12444-1-AP) at dilution of 1:50 and alpha Tubulin mouse mAb (66031-1-Ig) at dilution of 1:100, further stained with Alexa Fluor 488-conjugated AffiniPure Goat Anti-Rabbit IgG(H+L) for 12444-1-AP, and Alexa Fluor 594-conjugated AffiniPure Goat Anti-mouse IgG (H+L) for 66031-1-Ig.



IP Result of anti-NDUFS1 (IP:12444-1-AP, 4ug; Detection:12444-1-AP 1:500) with mouse lung tissue lysate 2800ug.