

À des fins de recherche uniquement

Anticorps Polyclonal de lapin anti-TBX6



Numéro de catalogue: 12447-1-AP

Informations de base

Numéro de catalogue:
12447-1-AP

Taille:
150ul, Concentration: 650 µg/ml by Nanodrop and 367 µg/ml by Bradford method using BSA as the standard;

Hôte:
Lapin

Isotype:
IgG

Immunogen Catalog Number:
AG3050

Numéro d'acquisition GenBank:
BC026031

Identification du gène (NCBI):
6911

Nom complet:
T-box 6

MW calculé
436 aa, 47 kDa

MW observés:
58 kDa

Méthode de purification:
Purification par affinité contre l'antigène

Dilutions recommandées:
WB 1:500-1:2000
IP 0.5-4.0 ug for IP and 1:500-1:1000 for WB

Applications

Applications testées:
IP, WB, ELISA

Spécificité de l'espèce:
Humain, rat, souris

Contrôles positifs:

WB : cellules HeLa, cellules A375, cellules A549, cellules Raji, tissu placentaire humain, tissu pulmonaire de souris, tissu pulmonaire humain

IP : tissu placentaire humain,

Informations générales

TBX6, also named as T-box transcription factor TBX6, is a 436 amino acid protein, which localizes in the nucleus and forms a dimeric complex with DNA. T-box transcription factor that plays an essential role in the determination of the fate of axial stem cells: neural vs mesodermal. The calculated molecular weight of TBX6 is 47 kDa, but the modified TBX6 is about 58 kDa.

Stockage

Stockage:

Stocker à -20°C. Stable pendant un an après l'expédition.

Tampon de stockage:

PBS avec azoture de sodium à 0,02 % et glycérol à 50 % pH 7,3

L'aliquotage n'est pas nécessaire pour le stockage à -20C

*** Les 20ul contiennent 0,1% de BSA.

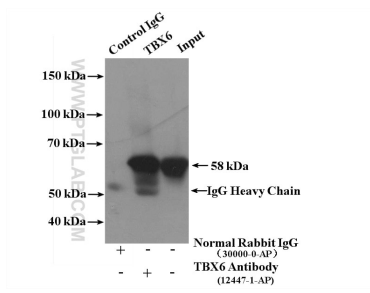
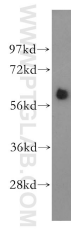
For technical support and original validation data for this product please contact:

T: 1 (888) 4PTGLAB (1-888-478-4522) (toll free in USA), or 1(312) 455-8498 (outside USA)

E: proteintech@ptglab.com
W: ptglab.com

This product is exclusively available under Proteintech Group brand and is not available to purchase from any other manufacturer.

Données de validation sélectionnées



HeLa cells were subjected to SDS PAGE followed by western blot with 12447-1-AP (TBX6 antibody) at dilution of 1:800 incubated at room temperature for 1.5 hours.

IP Result of anti-TBX6 (IP:12447-1-AP, 4ug; Detection:12447-1-AP 1:500) with human placenta tissue lysate 2800ug.