

À des fins de recherche uniquement

Anticorps Polyclonal de lapin anti-PIP4K2A



Numéro de catalogue: 12469-1-AP

3 Publications

Informations de base

Numéro de catalogue: 12469-1-AP	Numéro d'acquisition GenBank: BC018034	Méthode de purification: Purification par affinité contre l'antigène
Taille: 150ul, Concentration: 600 µg/ml by Nanodrop;	Identification du gène (NCBI): 5305	Dilutions recommandées: WB 1:500-1:2000 IP 0.5-4.0 ug for IP and 1:500-1:1000 for WB IHC 1:50-1:500 IF 1:50-1:500
Hôte: Lapin	Nom complet: phosphatidylinositol-5-phosphate 4-kinase, type II, alpha	
Isotype: IgG	MW calculé: 406 aa, 46 kDa	
Immunogen Catalog Number: AG3152	MW observés: 46 kDa	

Applications

Applications testées:
IF, IHC, IP, WB, ELISA

Demandes citées:
IF, IHC, IP, WB

Spécificité de l'espèce:
Humain, rat, souris

Espèces citées:
Humain, souris

Remarque-IHC: il est suggéré de démasquer l'antigène avec un tampon de TE buffer pH 9.0; (*) À défaut, le démasquage de l'antigène peut être effectué avec un tampon citrate pH 6.0.

Contrôles positifs:

WB: tissu cérébral de souris, cellules HeLa, tissu cérébral de rat

IP: tissu cérébral de souris,

IHC: tissu splénique humain, tissu cérébral de souris

IF: cellules SH-SY5Y, cellules HepG2

Informations générales

Publications notables

Autrice	Pubmed ID	Journal	Application
Archana Ravi	33984270	Dev Cell	IF,IHC
Mei Zhang	35987479	Int J Biochem Cell Biol	IF,IHC,IP,WB
Joanna Triscott	36724278	Sci Adv	WB,IHC,IF

Stockage

Stockage:

Stocker à -20°C. Stable pendant un an après l'expédition.

Tampon de stockage:

PBS avec azoture de sodium à 0,02 % et glycérol à 50 % pH 7,3

L'aliquotage n'est pas nécessaire pour le stockage à -20C

*** Les 20ul contiennent 0,1% de BSA.

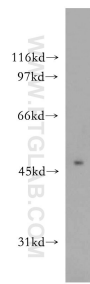
For technical support and original validation data for this product please contact:

T: 1 (888) 4PTGLAB (1-888-478-4522) (toll free in USA), or 1(312) 455-8498 (outside USA)

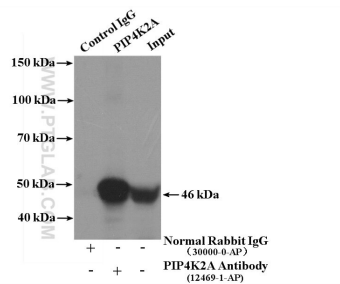
E: proteintech@ptglab.com
W: ptglab.com

This product is exclusively available under Proteintech Group brand and is not available to purchase from any other manufacturer.

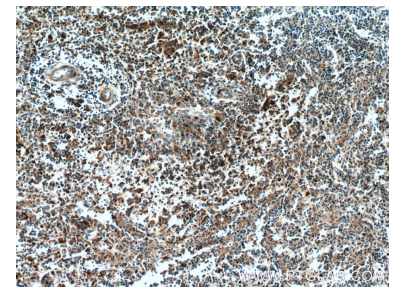
Données de validation sélectionnées



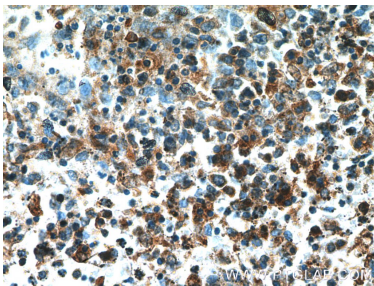
mouse brain tissue were subjected to SDS PAGE followed by western blot with 12469-1-AP (PIP4K2A antibody) at dilution of 1:500 incubated at room temperature for 1.5 hours.



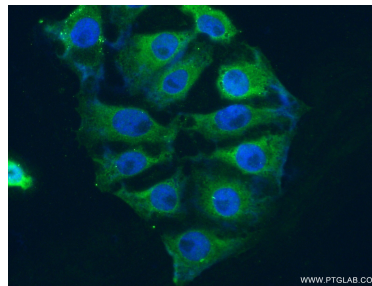
IP Result of anti-PIP4K2A (IP:12469-1-AP, 4ug; Detection:12469-1-AP 1:500) with mouse brain tissue lysate 4400ug.



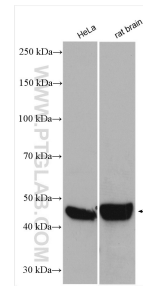
Immunohistochemical analysis of paraffin-embedded human spleen tissue slide using 12469-1-AP (PIP4K2A Antibody) at dilution of 1:200 (under 10x lens).



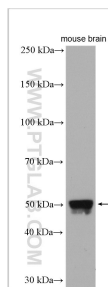
Immunohistochemical analysis of paraffin-embedded human spleen tissue slide using 12469-1-AP (PIP4K2A Antibody) at dilution of 1:200 (under 40x lens).



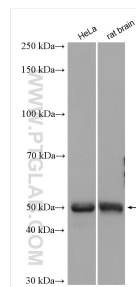
Immunofluorescent analysis of (4% PFA) fixed SH-SY5Y cells using 12469-1-AP (PIP4K2A antibody) at dilution of 1:50 and Alexa Fluor 488-conjugated AffiniPure Goat Anti-Rabbit IgG(H+L).



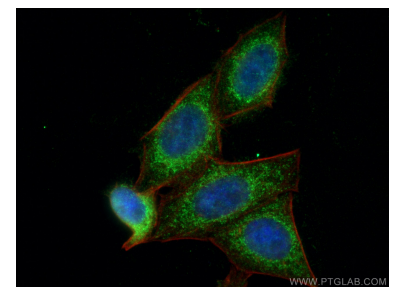
Various lysates were subjected to SDS PAGE followed by western blot with 12469-1-AP (PIP4K2A antibody) at dilution of 1:5000 incubated at room temperature for 1.5 hours.



mouse brain tissue were subjected to SDS PAGE followed by western blot with 12469-1-AP (PIP4K2A antibody) at dilution of 1:800 incubated at room temperature for 1.5 hours.



Various lysates were subjected to SDS PAGE followed by western blot with 12469-1-AP (PIP4K2A antibody) at dilution of 1:3000 incubated at room temperature for 1.5 hours.



Immunofluorescent analysis of (4% PFA) fixed HepG2 cells using PIP4K2A antibody (12469-1-AP) at dilution of 1:200 and CoraLite@488-Conjugated AffiniPure Goat Anti-Rabbit IgG(H+L), CL594-Phalloidin (black).