

À des fins de recherche uniquement

Anticorps Polyclonal de lapin anti- PREPL



Numéro de catalogue: 12478-1-AP

Informations de base

Numéro de catalogue:
12478-1-AP

Taille:
150ul , Concentration: 187 µg/ml by
Bradford method using BSA as the
standard;

Hôte:
Lapin

Isotype:
IgG

Immunogen Catalog Number:
AG3196

Numéro d'acquisition GenBank:
BC013193

Identification du gène (NCBI):
9581

Nom complet:
prolyl endopeptidase-like

MW calculé
72 kDa

MW observés:
72 kDa

Méthode de purification:
Purification par affinité contre
l'antigène

Dilutions recommandées:
WB 1:500-1:3000

Applications

Applications testées:
WB, ELISA

Spécificité de l'espèce:
Humain, rat, souris

Contrôles positifs:

WB : tissu cérébral humain,

Informations générales

PREPL (Prolyl endopeptidase-like) is also named as KIAA0436 and belongs to the prolyl oligopeptidase subfamily of serine peptidases. It is probable a serine peptidase whose precise substrate specificity remains unclear. Does not cleave peptides after an arginine or lysine residue. PREPL is a novel oligopeptidase with unique structural and functional characteristics (PMID:16385448). It has 4 isoforms produced by alternative splicing and can exist as a homodimer (PMID:16143824). Defects in PREPL are a cause of hypotonia-cystinuria syndrome (HCS).

Stockage

Stockage:

Stocker à -20°C. Stable pendant un an après l'expédition.

Tampon de stockage:

PBS avec azote de sodium à 0,02 % et glycérol à 50 % pH 7,3

L'aliquotage n'est pas nécessaire pour le stockage à -20°C

*** Les 20ul contiennent 0,1% de BSA.

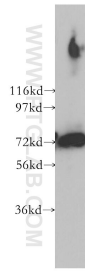
For technical support and original validation data for this product please contact:

T: 1 (888) 4PTGLAB (1-888-478-4522) (toll free
in USA), or 1(312) 455-8498 (outside USA)

E: proteintech@ptglab.com
W: ptglab.com

This product is exclusively available under Proteintech Group brand and is not available to purchase from any other manufacturer.

Données de validation sélectionnées



human brain tissue were subjected to SDS PAGE followed by western blot with 12478-1-AP (PREPL antibody) at dilution of 1:400 incubated at room temperature for 1.5 hours.