

À des fins de recherche uniquement

Anticorps Polyclonal de lapin anti-Mu Crystallin



Numéro de catalogue: 12495-1-AP

3 Publications

Informations de base

Numéro de catalogue:

12495-1-AP

Taille:

150ul , Concentration: 400 µg/ml by Bradford method using BSA as the standard;

Hôte:

Lapin

Isotype:

IgG

Immunogen Catalog Number:

AG3161

Numéro d'acquisition GenBank:

BC018061

Identification du gène (NCBI):

1428

Nom complet:

crystallin, mu

MW calculé

314 aa, 34 kDa

MW observés:

34 kDa

Méthode de purification:

Purification par affinité contre l'antigène

Dilutions recommandées:

WB 1:1000-1:4000

IHC 1:50-1:500

IF 1:50-1:500

Applications

Applications testées:

FC, IF, IHC, WB, ELISA

Demandes citées:

IF, IHC, WB

Spécificité de l'espèce:

Humain, rat, souris

Espèces citées:

rat, souris

Remarque-IHC: il est suggéré de démasquer l'antigène avec un tampon de TE buffer pH 9,0; (*) A défaut, 'le démasquage de l'antigène peut être 'effectué avec un tampon citrate pH 6,0.

Contrôles positifs:

WB : cellules Y79, cellules Jurkat, tissu cardiaque humain, tissu rénal humain

IHC : tissu de gliome humain,

IF : tissu de gliome humain,

Informations générales

mu Crystallin(thiomorpholine-carboxylate dehydrogenase) is also named as THBP, CRYM, ketimine reductase and belongs to the ornithine cyclodeaminase family. This protein catalyzes the reduction of imine bonds in brain substrates that may include cystathionine ketimine (CysK) and lanthionine ketimine (LK). It is also involved in the regulation of the free intracellular concentration of triiodothyronine and access to its nuclear receptor.

Publications notables

Autrice	Pubmed ID	Journal	Application
Yuko Ishido	26370556	Endocr J	WB
Reiji Hommyo	29603402	Neuropathology	WB,IHC,IF
John DeSisto	32634398	Dev Cell	IF

Stockage

Stockage:

Stocker à -20°C. Stable pendant un an après l'expédition.

Tampon de stockage:

PBS avec azoture de sodium à 0,02 % et glycérol à 50 % pH 7,3

L'aliquotage n'est pas nécessaire pour le stockage à -20C

*** Les 20ul contiennent 0,1% de BSA.

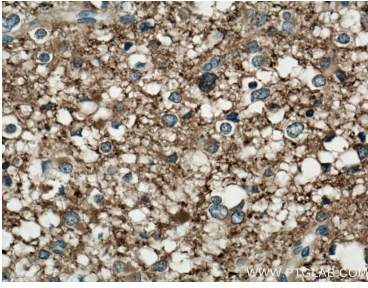
For technical support and original validation data for this product please contact:

T: 1 (888) 4PTGLAB (1-888-478-4522) (toll free in USA), or 1(312) 455-8498 (outside USA)

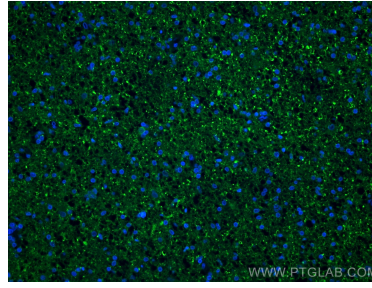
E: proteintech@ptglab.com
W: ptglab.com

This product is exclusively available under Proteintech Group brand and is not available to purchase from any other manufacturer.

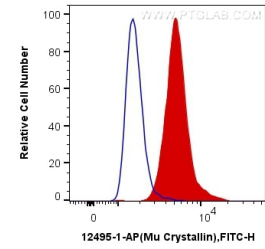
Données de validation sélectionnées



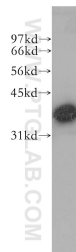
Immunohistochemical analysis of paraffin-embedded human gliomas tissue slide using 12495-1-AP (mu Crystallin antibody) at dilution of 1:200 (under 40x lens. Heat mediated antigen retrieval with Tris-EDTA buffer (pH 9.0).



Immunofluorescent analysis of (4% PFA) fixed human gliomas tissue using Mu Crystallin antibody (12495-1-AP) at dilution of 1:200 and CoraLite@488-Conjugated AffiniPure Goat Anti-Rabbit IgG(H+L).



1X10⁶ SH-SY5Y cells were intracellularly stained with 0.2 ug Anti-Human Mu Crystallin (12495-1-AP) and CoraLite@488-Conjugated AffiniPure Goat Anti-Rabbit IgG(H+L) at dilution 1:1000 (red), or 0.2 ug Control Antibody. Cells were fixed with 4% PFA and permeabilized with Flow Cytometry Perm Buffer (PF00011-C).



Y79 cells were subjected to SDS PAGE followed by western blot with 12495-1-AP (mu Crystallin antibody) at dilution of 1:400 incubated at room temperature for 1.5 hours.