

À des fins de recherche uniquement

Anticorps Polyclonal de lapin anti-SHC



Numéro de catalogue: 12496-1-AP

Phare

2 Publications

Informations de base

Numéro de catalogue: 12496-1-AP	Numéro d'acquisition GenBank: BC014158	Méthode de purification: Purification par affinité contre l'antigène
Taille: 150ul, Concentration: 1000 µg/ml by Nanodrop and 400 µg/ml by Bradford method using BSA as the standard;	Identification du gène (NCBI): 6464	Dilutions recommandées: WB 1:500-1:2000 IF 1:10-1:100
Hôte: Lapin	Nom complet: SHC (Src homology 2 domain containing) transforming protein 1	
Isotype: IgG	MW calculé: 66 kDa	
Immunogen Catalog Number: AG3165	MW observés: 66 kDa, 52 kDa, 46 kDa	

Applications

Applications testées: IF, WB, ELISA	Contrôles positifs: WB : cellules Jurkat, cellules A431, cellules C6, cellules HeLa, cellules NIH/3T3 IF : cellules HepG2,
Demandes citées: IF, WB	
Spécificité de l'espèce: Humain, rat, souris	
Espèces citées: Humain, souris	

Informations générales

The proto-oncogene SHC family consists of SHCA, SHCB, SHCC, and SHCD4 gene members, which can encode 7 kinds of cohesive molecules. SHC family is widely expressed and functional. The SHC1 gene is located in zone 1, region 2 of human chromosome 1. SHC1 is believed to be involved in inhibiting neuronal apoptosis and regulating the receptor tyrosine kinase pathway. SHC1 sensitizes cancer cells to the 8-Cl-cAMP treatment.

Publications notables

Autrice	Pubmed ID	Journal	Application
Hao-Ke Li	32841643	Exp Cell Res	WB
Qiwei Jiang	37294756	Sci Adv	WB,IF

Stockage

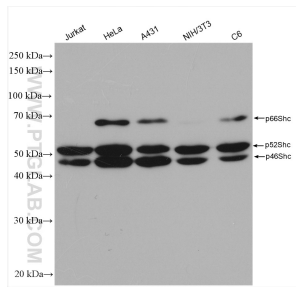
Stockage:
Stocker à -20°C. Stable pendant un an après l'expédition.
Tampon de stockage:
PBS avec azoture de sodium à 0,02 % et glycérol à 50 % pH 7,3
L'aliquotage n'est pas nécessaire pour le stockage à -20C

*** Les 20ul contiennent 0,1% de BSA.

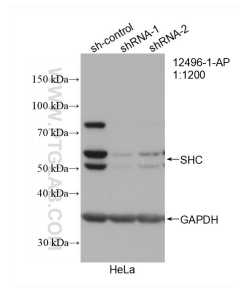
For technical support and original validation data for this product please contact:
T: 1 (888) 4PTGLAB (1-888-478-4522) (toll free in USA), or 1(312) 455-8498 (outside USA)
E: proteintech@ptglab.com
W: ptglab.com

This product is exclusively available under Proteintech Group brand and is not available to purchase from any other manufacturer.

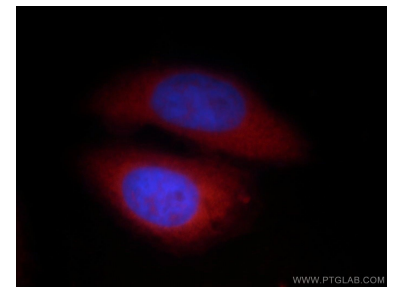
Données de validation sélectionnées



Various lysates were subjected to SDS PAGE followed by western blot with 12496-1-AP (SHC antibody) at dilution of 1:1000 incubated at room temperature for 1.5 hours.



WB result of SHC antibody (12496-1-AP; 1:1200; incubated at room temperature for 1.5 hours) with sh-Control and sh-SHC transfected HeLa cells.



Immunofluorescent analysis of HepG2 cells, using SHC1 antibody 12496-1-AP at 1:25 dilution and Rhodamine-labeled goat anti-rabbit IgG (red). Blue pseudocolor = DAPI (fluorescent DNA dye).