

À des fins de recherche uniquement

Anticorps Polyclonal de lapin anti-ELF2



Numéro de catalogue: 12499-1-AP

Phare

3 Publications

Informations de base

Numéro de catalogue:
12499-1-AP

Taille:
150ul, Concentration: 500 µg/ml by Nanodrop and 200 µg/ml by Bradford method using BSA as the standard;

Hôte:
Lapin

Isotype:
IgG

Immunogen Catalog Number:
AG3170

Numéro d'acquisition GenBank:
BC034951

Identification du gène (NCBI):
1998
Nom complet:
E74-like factor 2 (ets domain transcription factor)

MW calculé:
533 aa, 57 kDa

MW observés:
63-64 kDa, 56-57 kDa

Méthode de purification:
Purification par affinité contre l'antigène

Dilutions recommandées:
WB 1:500-1:2000
IP 0.5-4.0 ug for IP and 1:500-1:1000 for WB

Applications

Applications testées:
IP, WB, ELISA

Demandes citées:
WB

Spécificité de l'espèce:
Humain, rat, souris

Espèces citées:
Chèvre, Humain, souris

Contrôles positifs:

WB : cellules A2780, tissu cérébral humain, tissu hépatique humain

IP : cellules A2780,

Informations générales

Ets-1 is the prototype member of a family of genes firstly identified on the basis of homology to the v-Ets oncogene isolated from the E26 erythroblastosis virus. Members of the Ets gene family have varied patterns of tissue expression, and share a highly conserved carboxy terminal domain containing a sequence related to the SV40 large T antigen nuclear localization signal sequence. This conserved domain is essential for Ets-1 binding to DNA and is likely to be responsible for the DNA binding activity of all members of the Ets gene family. ELF2 belongs to the Ets-1 family. ELF2 exists several isoforms and the range of molecular weight of isoform is about 54-66 kDa.

Publications notables

Autrice	Pubmed ID	Journal	Application
Yunpeng Bai	34719090	Cell Biol Int	WB
Shizhu Yuan	34157937	Ren Fail	WB
Yue Zhang	32656203	Front Cell Dev Biol	WB

Stockage

Stockage:

Stocker à -20°C. Stable pendant un an après l'expédition.

Tampon de stockage:

PBS avec azoture de sodium à 0,02 % et glycérol à 50 % pH 7,3

L'aliquotage n'est pas nécessaire pour le stockage à -20C

*** Les 20ul contiennent 0,1% de BSA.

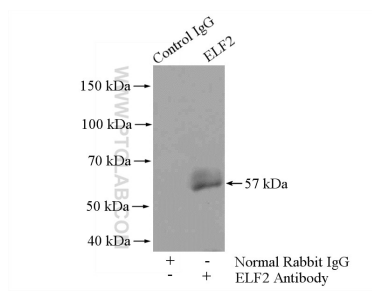
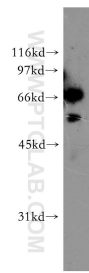
For technical support and original validation data for this product please contact:

T: 1 (888) 4PTGLAB (1-888-478-4522) (toll free in USA), or 1(312) 455-8498 (outside USA)

E: proteintech@ptglab.com
W: ptglab.com

This product is exclusively available under Proteintech Group brand and is not available to purchase from any other manufacturer.

Données de validation sélectionnées



A2780 cells were subjected to SDS PAGE followed by western blot with 12499-1-AP (ELF2 antibody) at dilution of 1:500 incubated at room temperature for 1.5 hours.

IP Result of anti-ELF2 (IP:12499-1-AP, 4ug; Detection:12499-1-AP 1:500) with A2780 cells lysate 960ug.