

À des fins de recherche uniquement

# Anticorps Polyclonal de lapin anti- PLEK



Numéro de catalogue: 12506-1-AP

Phare

3 Publications

## Informations de base

Numéro de catalogue:  
12506-1-AP

Taille:  
150ul, Concentration: 500 µg/ml by  
Nanodrop and 327 µg/ml by Bradford  
method using BSA as the standard;

Hôte:  
Lapin

Isotype:  
IgG

Immunogen Catalog Number:  
AG3187

Numéro d'acquisition GenBank:  
BC018549

Identification du gène (NCBI):

5341  
Nom complet:  
pleckstrin

MW calculé  
350 aa, 40 kDa

MW observés:  
40-47 kDa

Méthode de purification:  
Purification par affinité contre  
l'antigène

Dilutions recommandées:  
WB 1:1000-1:4000  
IP 0.5-4.0 ug for IP and 1:500-1:2000  
for WB  
IHC 1:20-1:200

## Applications

Applications testées:  
IHC, IP, WB, ELISA

Demandes citées:  
WB

Spécificité de l'espèce:  
Humain, rat, souris

Espèces citées:  
Humain, souris

**Remarque-IHC: il est suggéré de démasquer  
l'antigène avec un tampon de TE buffer pH  
9.0; (\*) A défaut, le démasquage de  
l'antigène peut être effectué avec un  
tampon citrate pH 6,0.**

Contrôles positifs:

WB : cellules U-937, tissu splénique de rat

IP : cellules U-937,

IHC : tissu de cancer du poumon humain,

## Informations générales

PLEK (pleckstrin; also known as p47) was originally identified as the major PKC substrate in platelets and later is found to be expressed in all cells of the hemopoietic system. Through two pleckstrin homology (PH) domains at its N and C termini, PLEK may interact with various protein and/or lipid ligands and serve as an intracellular adaptor/targeting protein. Predominantly cytosolic in unstimulated cells, PLEK would undergo transient redistribution to phagosomal membrane in response to stimuli. PLEK has been found to be hyperphosphorylated in diabetic mononuclear phagocytes and promote proinflammatory cytokine secretion in diabetes. (10477609, 17579087)

## Publications notables

Autrice	Pubmed ID	Journal	Application
Jing Guo	31849582	Front Neurosci	WB
Jing Lin	34837956	Mol Med	WB
Tian Luo	29643078	mSphere	WB

## Stockage

Stockage:

Stocker à -20°C. Stable pendant un an après l'expédition.

Tampon de stockage:

PBS avec azoture de sodium à 0,02 % et glycérol à 50 % pH 7,3

L'aliquotage n'est pas nécessaire pour le stockage à -20C

\*\*\* Les 20ul contiennent 0,1% de BSA.

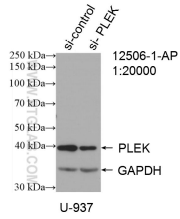
For technical support and original validation data for this product please contact:

T: 1 (888) 4PTGLAB (1-888-478-4522) (toll free  
in USA), or 1(312) 455-8498 (outside USA)

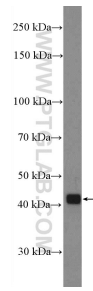
E: proteintech@ptglab.com  
W: ptglab.com

This product is exclusively available under Proteintech Group brand and is not available to purchase from any other manufacturer.

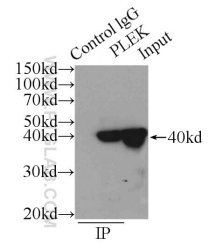
## Données de validation sélectionnées



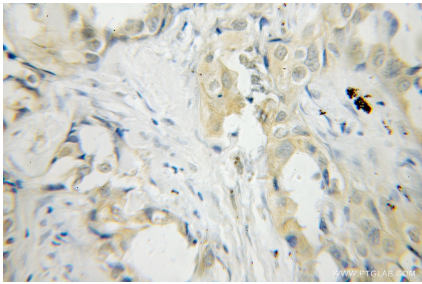
WB result of PLEK antibody (12506-1-AP; 1:20000; incubated at room temperature for 1.5 hours) with sh-Control and sh-PLEK transfected U-937 cells.



U-937 cells were subjected to SDS PAGE followed by western blot with 12506-1-AP (PLEK Antibody) at dilution of 1:2000 incubated at room temperature for 1.5 hours.



IP Result of anti-PLEK (IP:12506-1-AP, 3ug; Detection:12506-1-AP 1:1000) with U-937 cells lysate 3000ug.



Immunohistochemical analysis of paraffin-embedded human lung cancer using 12506-1-AP (PLEK antibody) at dilution of 1:50 (under 40x lens).