

À des fins de recherche uniquement

Anticorps Polyclonal de lapin anti-TRUB1



Numéro de catalogue: 12520-1-AP

Informations de base

Numéro de catalogue: 12520-1-AP	Numéro d'acquisition GenBank: BC030601	Méthode de purification: Purification par affinité contre l'antigène
Taille: 150ul, Concentration: 200 µg/ml by Nanodrop and 133 µg/ml by Bradford method using BSA as the standard;	Identification du gène (NCBI): 142940	Dilutions recommandées: WB 1:1000-1:4000 IP 0.5-4.0 ug for IP and 1:200-1:1000 for WB IHC 1:50-1:500
Hôte: Lapin	Nom complet: TruB pseudouridine (psi) synthase homolog 1 (E. coli)	
Isotype: IgG	MW calculé: 349 aa, 37 kDa	
Immunogen Catalog Number: AG3213	MW observés: 37 kDa	

Applications

Applications testées: IHC, IP, WB, ELISA	Contrôles positifs: WB : cellules HEK-293T, cellules HepG2 IP : tissu hépatique de souris, IHC : tissu rénal humain, tissu testiculaire de souris
Spécificité de l'espèce: Humain, souris	
Remarque-IHC: <i>il est suggéré de démasquer l'antigène avec un tampon de TE buffer pH 9.0; (*) À défaut, le démasquage de l'antigène peut être effectué avec un tampon citrate pH 6,0.</i>	

Informations générales

TRUB1 gene encodes a 349-amino acid product, with a VFAVHKPKGPTSA box in positions 71-83 corresponding to motif I of the TruB family (probably involved in conserving protein structure). This protein may be responsible for synthesis of pseudouridine from uracil in transfer RNAs.

Stockage

Stockage:
Stocker à -20°C. Stable pendant un an après l'expédition.
Tampon de stockage:
PBS avec azoture de sodium à 0,02 % et glycérol à 50 % pH 7,3
L'aliquotage n'est pas nécessaire pour le stockage à -20C

*** Les 20ul contiennent 0,1% de BSA.

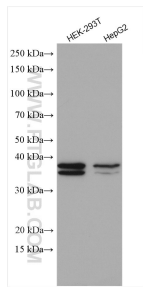
For technical support and original validation data for this product please contact:

T: 1 (888) 4PTGLAB (1-888-478-4522) (toll free in USA), or 1(312) 455-8498 (outside USA)

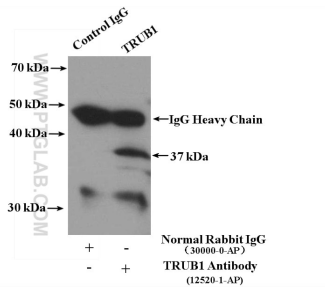
E: proteintech@ptglab.com
W: ptglab.com

This product is exclusively available under Proteintech Group brand and is not available to purchase from any other manufacturer.

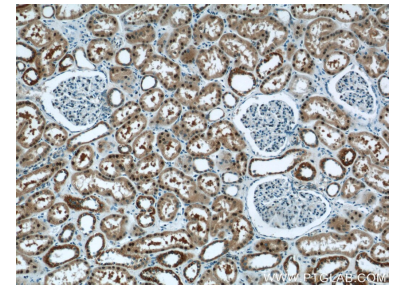
Données de validation sélectionnées



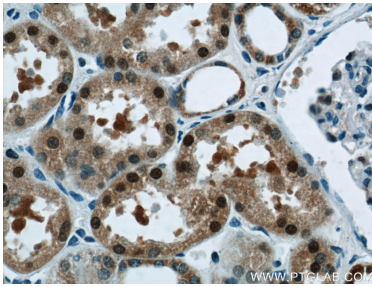
Various lysates were subjected to SDS PAGE followed by western blot with 12520-1-AP (TRUB1 antibody) at dilution of 1:2000 incubated at room temperature for 1.5 hours.



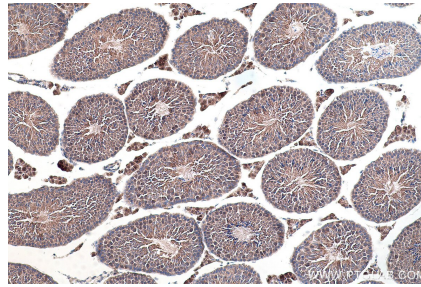
IP Result of anti-TRUB1 (IP:12520-1-AP, 4ug; Detection:12520-1-AP 1:300) with mouse liver tissue lysate 6400ug.



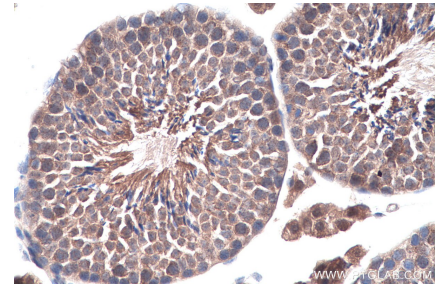
Immunohistochemical analysis of paraffin-embedded human kidney tissue slide using 12520-1-AP (TRUB1 Antibody) at dilution of 1:50 (under 10x lens).



Immunohistochemical analysis of paraffin-embedded human kidney tissue slide using 12520-1-AP (TRUB1 Antibody) at dilution of 1:50 (under 40x lens).



Immunohistochemical analysis of paraffin-embedded mouse testis tissue slide using 12520-1-AP (TRUB1 antibody) at dilution of 1:500 (under 10x lens). Heat mediated antigen retrieval with Tris-EDTA buffer (pH 9.0).



Immunohistochemical analysis of paraffin-embedded mouse testis tissue slide using 12520-1-AP (TRUB1 antibody) at dilution of 1:500 (under 40x lens). Heat mediated antigen retrieval with Tris-EDTA buffer (pH 9.0).