

À des fins de recherche uniquement

Anticorps Polyclonal de lapin anti-SULT1E1



Numéro de catalogue: 12522-1-AP

Phare

17 Publications

Informations de base

Numéro de catalogue:
12522-1-AP

Taille:
150ul, Concentration: 900 µg/ml by Nanodrop and 380 µg/ml by Bradford method using BSA as the standard;

Hôte:
Lapin

Isotype:
IgG

Immunogen Catalog Number:
AG3216

Numéro d'acquisition GenBank:
BC027956

Identification du gène (NCBI):
6783

Nom complet:
sulfotransferase family 1E, estrogen-preferring, member 1

MW calculé
294 aa, 35 kDa

MW observés:
32-35 kDa

Méthode de purification:
Purification par affinité contre l'antigène

Dilutions recommandées:
WB 1:500-1:1000
IP 0.5-4.0 ug for IP and 1:200-1:1000 for WB
IHC 1:50-1:500

Applications

Applications testées:
IHC, IP, WB, ELISA

Demandes citées:
IF, IHC, WB

Spécificité de l'espèce:
Humain, rat, souris

Espèces citées:
Humain, rat, souris

Remarque-IHC: il est suggéré de démasquer l'antigène avec un tampon de TE buffer pH 9,0; (*) A défaut, le démasquage de l'antigène peut être effectué avec un tampon citrate pH 6,0.

Contrôles positifs:

WB : tissu pulmonaire humain, tissu de glande surrénale humaine, tissu hépatique humain, tissu rénal de souris, tissu rénal humain

IP : tissu hépatique de souris,

IHC : tissu de cancer du sein humain,

Informations générales

SULT1E1, also known as estrogen sulfotransferase, catalyzes the sulfation of endogenous estrogens as well as xenobiotic estrogen-like chemicals, converting them into the inactive form. SULT1E1 is a 33-35 kDa cytosolic protein that has been detected in human hepatic and nonhepatic tissues (17035602). SULT1E1 is expressed in breast and endometrial tissues, and some studies have investigated its implication in tumor development. Higher expression of SULT1E1 was observed in breast cancer tissues compared with normal breast tissues (22380844). This antibody detected a major band around 35 kD in lysates of mouse kidney, human liver and so on.

Publications notables

| Autrice | Pubmed ID | Journal | Application |
|----------------------|-----------|-------------------|-------------|
| Shuai Wang | 28912067 | Biochem Pharmacol | WB |
| Barbara Licznarska | 27854074 | Mol Cell Biochem | WB |
| Anne C Silva Barbosa | 32424001 | J Am Soc Nephrol | IHC |

Stockage

Stockage:

Stocker à -20°C. Stable pendant un an après l'expédition.

Tampon de stockage:

PBS avec azoture de sodium à 0,02 % et glycérol à 50 % pH 7,3

L'aliquotage n'est pas nécessaire pour le stockage à -20C

*** Les 20ul contiennent 0,1% de BSA.

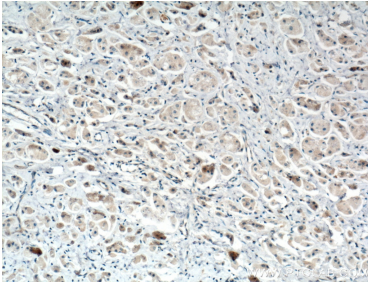
For technical support and original validation data for this product please contact:

T: 1 (888) 4PTGLAB (1-888-478-4522) (toll free in USA), or 1(312) 455-8498 (outside USA)

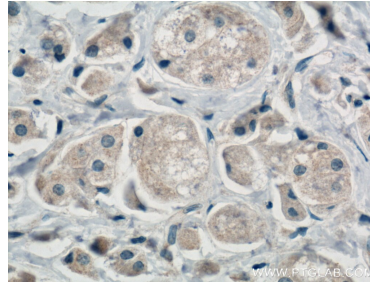
E: proteintech@ptglab.com
W: ptglab.com

This product is exclusively available under Proteintech Group brand and is not available to purchase from any other manufacturer.

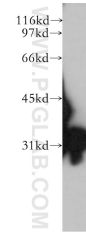
Données de validation sélectionnées



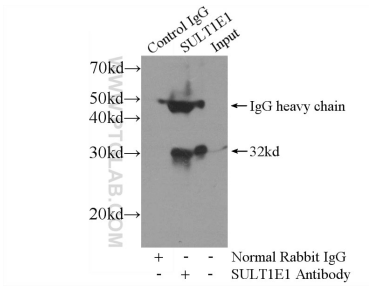
Immunohistochemical analysis of paraffin-embedded human breast cancer tissue slide using 12522-1-AP (SULT1E1 antibody) at dilution of 1:200 (under 10x lens. Heat mediated antigen retrieval with Tris-EDTA buffer (pH 9.0)).



Immunohistochemical analysis of paraffin-embedded human breast cancer tissue slide using 12522-1-AP (SULT1E1 antibody) at dilution of 1:200 (under 40x lens. Heat mediated antigen retrieval with Tris-EDTA buffer (pH 9.0)).



human lung tissue were subjected to SDS PAGE followed by western blot with 12522-1-AP (SULT1E1 antibody) at dilution of 1:500 incubated at room temperature for 1.5 hours.



IP Result of anti-SULT1E1 (IP:12522-1-AP, 4ug; Detection:12522-1-AP 1:400) with mouse liver tissue lysate 4000ug.