

À des fins de recherche uniquement

# Anticorps Polyclonal de lapin anti-IRF2



Numéro de catalogue: 12525-1-AP

Phare

6 Publications

## Informations de base

Numéro de catalogue:  
12525-1-AP

Taille:  
150ul, Concentration: 350 µg/ml by  
Nanodrop and 220 µg/ml by Bradford  
method using BSA as the standard;

Hôte:  
Lapin

Isotype:  
IgG

Immunogen Catalog Number:  
AG3220

Numéro d'acquisition GenBank:  
BC015803

Identification du gène (NCBI):  
3660

Nom complet:  
IRF 2

MW calculé  
349 aa, 39 kDa

MW observés:  
50 kDa

Méthode de purification:  
Purification par affinité contre  
l'antigène

Dilutions recommandées:  
WB 1:1000-1:4000  
IP 0.5-4.0 ug for IP and 1:500-1:1000  
for WB  
IHC 1:20-1:200  
IF 1:200-1:800

## Applications

Applications testées:  
IF, IHC, IP, WB, ELISA

Demandes citées:  
IHC, WB

Spécificité de l'espèce:  
Humain, rat, souris

Espèces citées:  
Humain, poulet, souris

**Remarque-IHC: il est suggéré de démasquer  
l'antigène avec un tampon de TE buffer pH  
9,0; (\*) A défaut, 'le démasquage de  
l'antigène peut être 'effectué avec un  
tampon citrate pH 6,0.**

Contrôles positifs:

WB : cellules HeLa, cellules COLO 320, cellules Jurkat,  
tissu de côlon de souris

IP : cellules Jurkat,

IHC : tissu de cancer du côlon humain,

IF : cellules Jurkat,

## Informations générales

IRF2, also known as IFN regulatory factor 2, which belongs to the IRF family. IRF2 specifically binds to the upstream regulatory region of type I IFN and IFN-inducible MHC class I genes (the IFN consensus sequence (ICS)) and represses those genes. IRF2 also acts as an activator for several genes including H4 and IL7. IRF2 constitutively binds to the ISRE promoter to activate IL7. IRF2 is involved in cell cycle regulation through binding the site II (HiNF-M) promoter region of H4 and activating transcription during cell growth. The calculated molecular weight of IRF2 is 39 kDa, but post-modification of IRF2 is about 50 kDa (PMID: 17698501).

## Publications notables

Autrice	Pubmed ID	Journal	Application
Shiao Tong	36156371	Transl Oncol	WB
Xiangzhi Li	31138473	J Dermatol Sci	WB,IHC
Hongyan Sun	35806321	Int J Mol Sci	WB

## Stockage

Stockage:

Stocker à -20°C. Stable pendant un an après l'expédition.

Tampon de stockage:

PBS avec azoture de sodium à 0,02 % et glycérol à 50 % pH 7,3

L'aliquotage n'est pas nécessaire pour le stockage à -20C

\*\*\* Les 20ul contiennent 0,1% de BSA.

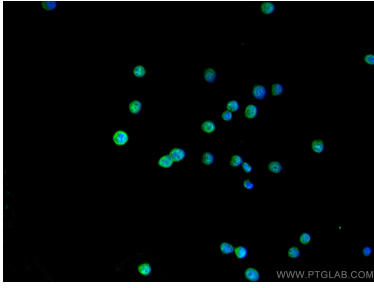
For technical support and original validation data for this product please contact:

T: 1 (888) 4PTGLAB (1-888-478-4522) (toll free  
in USA), or 1(312) 455-8498 (outside USA)

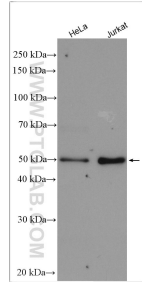
E: proteintech@ptglab.com  
W: ptglab.com

This product is exclusively available under Proteintech Group brand and is not available to purchase from any other manufacturer.

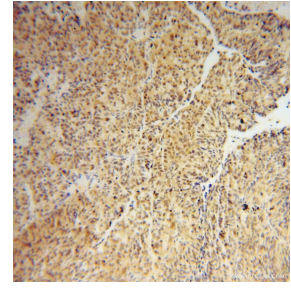
## Données de validation sélectionnées



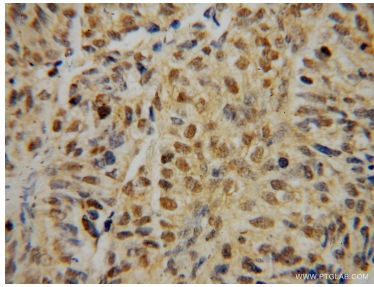
Immunofluorescent analysis of (4% PFA) fixed Jurkat cells using IRF2 antibody (12525-1-AP) at dilution of 1:400 and CoraLite®488-Conjugated AffiniPure Goat Anti-Rabbit IgG(H+L).



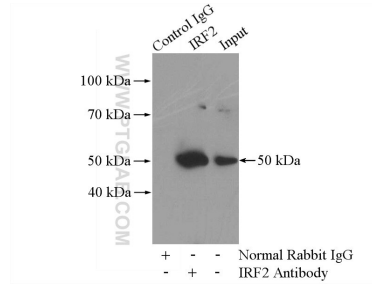
Various lysates were subjected to SDS PAGE followed by western blot with 12525-1-AP (IRF2 antibody) at dilution of 1:2000 incubated at room temperature for 1.5 hours.



Immunohistochemical analysis of paraffin-embedded human colon cancer using 12525-1-AP (IRF2 antibody) at dilution of 1:50 (under 10x lens).



Immunohistochemical analysis of paraffin-embedded human colon cancer using 12525-1-AP (IRF2 antibody) at dilution of 1:50 (under 40x lens).



IP Result of anti-IRF2 (IP:12525-1-AP, 4ug; Detection:12525-1-AP 1:500) with Jurkat cells lysate 2800ug.