

À des fins de recherche uniquement

# Anticorps Polyclonal de lapin anti-CHMP2B



Numéro de catalogue: 12527-1-AP

Phare

11 Publications

## Informations de base

Numéro de catalogue: 12527-1-AP	Numéro d'acquisition GenBank: BC001553	Méthode de purification: Purification par affinité contre l'antigène
Taille: 150ul , Concentration: 450 µg/ml by Nanodrop;	Identification du gène (NCBI): 25978	Dilutions recommandées: WB 1:1000-1:4000 IHC 1:50-1:500 IF 1:50-1:500
Hôte: Lapin	Nom complet: chromatin modifying protein 2B	
Isotype: IgG	MW calculé 24 kDa	
Immunogen Catalog Number: AG3222	MW observés: 32 kDa	

## Applications

### Applications testées:

IF, IHC, WB, ELISA

### Demandes citées:

IF, IHC, IP, WB

### Spécificité de l'espèce:

Humain, rat, souris

### Espèces citées:

Humain, porc, rat, souris

### Contrôles positifs:

**WB** : cellules NIH/3T3, tissu cardiaque humain, tissu cérébral de souris, tissu cérébral humain, tissu d'iléon humain, tissu placentaire humain, tissu rénal humain

**IHC** : tissu de cancer du foie humain, tissu cérébral humain, tissu hépatique humain

**IF** : cellules HepG2, cellules fixées par PFA

**Remarque-IHC: il est suggéré de démasquer l'antigène avec un tampon de TE buffer pH 9,0; (\*) À défaut, le démasquage de l'antigène peut être effectué avec un tampon citrate pH 6,0.**

## Informations générales

CHMP2B, chromatin-modifying protein 2b, also named CHMP2.5, VPS2B, and VPS2 2, belongs to the chromatin-modifying protein / charged multivesicular body protein (CHMP) family. It is a component of the endosomal sorting complex required for transport III (ESCRT-III), which involves in endosomal and autophagic trafficking of proteins to lysosomes for degradation. Mutations of CHMP2B lead to C-terminal truncation or are replaced with mis-splicing C-termini and cause frontotemporal lobar degeneration (FTLD). In CHMP2B mutation patients, p62- and ubiquitin-positive, but TDP-43 and FUS negative neural inclusions are formed, which may be caused by impaired lysosomal degradation through the autophagy and endosome-lysosome pathways.

## Publications notables

Autrice	Pubmed ID	Journal	Application
Kun Gao	29743530	Cell Death Dis	IF
Xiaokang Li	35235147	J Cardiovasc Transl Res	IHC
Cristina Ballesteros	29957332	Int J Parasitol Drugs Drug Resist	WB

## Stockage

### Stockage:

Stocker à -20°C. Stable pendant un an après l'expédition.

### Tampon de stockage:

PBS avec azoture de sodium à 0,02 % et glycérol à 50 % pH 7,3

L'aliquotage n'est pas nécessaire pour le stockage à -20C

\*\*\* Les 20ul contiennent 0,1% de BSA.

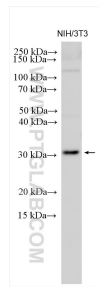
For technical support and original validation data for this product please contact:

T: 1 (888) 4PTGLAB (1-888-478-4522) (toll free in USA), or 1(312) 455-8498 (outside USA)

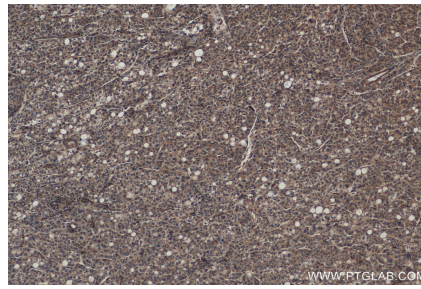
E: proteintech@ptglab.com  
W: ptglab.com

This product is exclusively available under Proteintech Group brand and is not available to purchase from any other manufacturer.

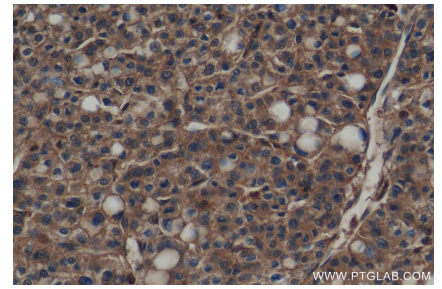
## Données de validation sélectionnées



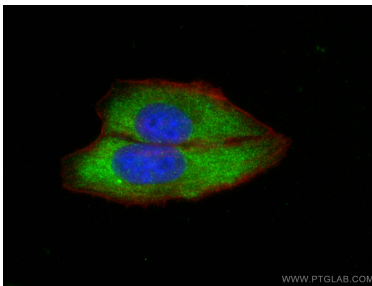
NIH/3T3 cells were subjected to SDS PAGE followed by western blot with 12527-1-AP (CHMP2B antibody) at dilution of 1:2000 incubated at room temperature for 1.5 hours.



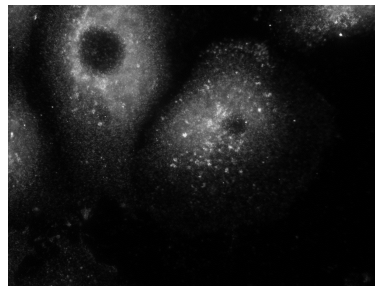
Immunohistochemical analysis of paraffin-embedded human liver cancer tissue slide using 12527-1-AP (CHMP2B antibody) at dilution of 1:200 (under 10x lens). Heat mediated antigen retrieval with Tris-EDTA buffer (pH 9.0).



Immunohistochemical analysis of paraffin-embedded human liver cancer tissue slide using 12527-1-AP (CHMP2B antibody) at dilution of 1:200 (under 40x lens). Heat mediated antigen retrieval with Tris-EDTA buffer (pH 9.0).



Immunofluorescent analysis of (-20°C Ethanol) fixed HepG2 cells using CHMP2B antibody (12527-1-AP) at dilution of 1:200 and CoraLite®488-Conjugated AffiniPure Goat Anti-Rabbit IgG(H+L), CL594-Phalloidin (red).



IF result (endosomal stain) of anti-CHMP2B (12527-1-AP) with the cell (PFA fixed) which has been treated with siRNA for VPS4 by Dr. Philip Woodman.