

À des fins de recherche uniquement

Anticorps Polyclonal de lapin anti-PLAA



Numéro de catalogue: 12529-1-AP

Phare

2 Publications

Informations de base

Numéro de catalogue:

12529-1-AP

Taille:

150ul, Concentration: 800 µg/ml by Nanodrop and 400 µg/ml by Bradford method using BSA as the standard;

Hôte:

Lapin

Isotype:

IgG

Immunogen Catalog Number:

AG3224

Numéro d'acquisition GenBank:

BC032551

Identification du gène (NCBI):

9373

Nom complet:

phospholipase A2-activating protein

MW calculé

738 aa, 81 kDa

MW observés:

72-74 kDa

Méthode de purification:

Purification par affinité contre l'antigène

Dilutions recommandées:

WB 1:500-1:1000

IP 0.5-4.0 ug for IP and 1:500-1:1000 for WB

IHC 1:50-1:500

Applications

Applications testées:

IHC, IP, WB, ELISA

Demandes citées:

IF, IHC, WB

Spécificité de l'espèce:

Humain

Espèces citées:

Humain, souris

Remarque-IHC: il est suggéré de démasquer l'antigène avec un tampon de TE buffer pH 9,0; (*) A défaut, 'le démasquage de l'antigène peut être 'effectué avec un tampon citrate pH 6,0.

Contrôles positifs:

WB : cellules K-562, cellules MCF-7

IP : cellules K-562,

IHC : tissu de cancer du poumon humain, tissu rénal humain

Informations générales

Phospholipase A-2-activating protein (PLAA), also named PLAP, can interact with ubiquitin and is involved in the maintenance of ubiquitin levels. PLAA contains multiple consensus domains including WD repeats, PFU domain and PUL domain. Although the function of PLAA remains unclear, ubiquitin binding of PLAA might be the central role that connects ubiquitination and degradation in ERAD. Recent finding revealed that PLAA served as a novel nociceptive mediator after incision, and its expression level is regulated by miR-203.

Publications notables

Autrice	Pubmed ID	Journal	Application
Zhilong Zheng	37211156	Biochim Biophys Acta Mol Cell Res	WB, IF
Sun Yuan Y	22846677	Anesthesiology	WB, IHC

Stockage

Stockage:

Stocker à -20°C. Stable pendant un an après l'expédition.

Tampon de stockage:

PBS avec azoture de sodium à 0,02 % et glycérol à 50 % pH 7,3

L'aliquoteage n'est pas nécessaire pour le stockage à -20C

*** Les 20ul contiennent 0,1% de BSA.

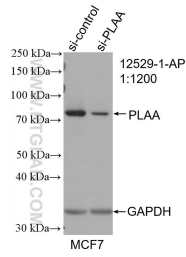
For technical support and original validation data for this product please contact:

T: 1 (888) 4PTGLAB (1-888-478-4522) (toll free in USA), or 1(312) 455-8498 (outside USA)

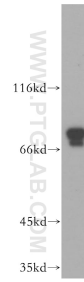
E: proteintech@ptglab.com
W: ptglab.com

This product is exclusively available under Proteintech Group brand and is not available to purchase from any other manufacturer.

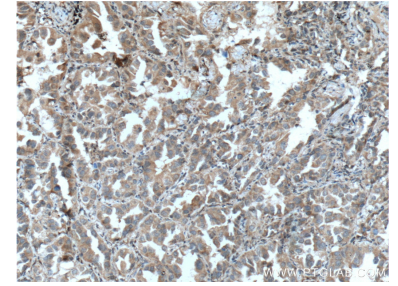
Données de validation sélectionnées



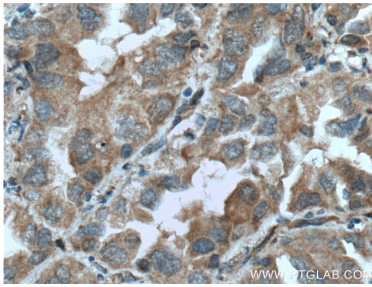
WB result of PLAA antibody (12529-1-AP; 1:1200; incubated at room temperature for 1.5 hours) with sh-Control and sh-PLAA transfected MCF-7 cells.



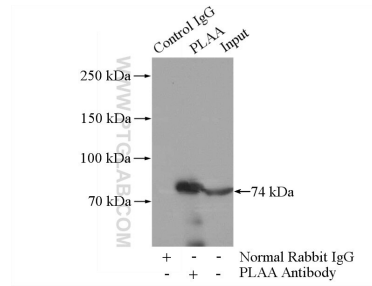
K-562 cells were subjected to SDS PAGE followed by western blot with 12529-1-AP (PLAA antibody) at dilution of 1:500 incubated at room temperature for 1.5 hours.



Immunohistochemical analysis of paraffin-embedded human lung cancer tissue slide using 12529-1-AP (PLAA Antibody) at dilution of 1:200 (under 10x lens). Heat mediated antigen retrieval with Tris-EDTA buffer (pH 9.0).



Immunohistochemical analysis of paraffin-embedded human lung cancer tissue slide using 12529-1-AP (PLAA Antibody) at dilution of 1:200 (under 40x lens). Heat mediated antigen retrieval with Tris-EDTA buffer (pH 9.0).



IP Result of anti-PLAA (IP:12529-1-AP, 4 μ g; Detection:12529-1-AP 1:600) with K-562 cells lysate 3200 μ g.