

À des fins de recherche uniquement

# Anticorps Polyclonal de lapin anti-HNF1B



Numéro de catalogue: 12533-1-AP

Phare

22 Publications

## Informations de base

Numéro de catalogue: 12533-1-AP	Numéro d'acquisition GenBank: BC017714	Méthode de purification: Purification par affinité contre l'antigène
Taille: 150ul , Concentration: 800 µg/ml by Nanodrop;	Identification du gène (NCBI): 6928	Dilutions recommandées: WB 1:500-1:1000 IHC 1:200-1:800 IF 1:50-1:500
Hôte: Lapin	Nom complet: HNF1 homeobox B	
Isotype: IgG	MW calculé: 557 aa, 61 kDa	
Immunogen Catalog Number: AG3232	MW observés: 58-60 kDa	

## Applications

### Applications testées:

IF, IHC, WB, ELISA

### Demandes citées:

CoIP, FC, IF, IHC, WB

### Spécificité de l'espèce:

Humain, rat, souris

### Espèces citées:

Humain, porc, souris

### Contrôles positifs:

WB : cellules L02, cellules Jurkat, cellules MDCK

IHC : tissu de carcinome à cellules rénales humain, tissu de cancer du foie humain

IF : cellules L02,

**Remarque-IHC: il est suggéré de démasquer l'antigène avec un tampon de TE buffer pH 9,0; (\*) À défaut, le démasquage de l'antigène peut être effectué avec un tampon citrate pH 6,0.**

## Informations générales

Hepatocyte nuclear factor-1-beta (HNF1B), or transcription factor-2(TCF2), is a member of the homeodomain-containing superfamily of transcription factors. Early expression of HNF1B(12533-1-AP) is seen in the kidney, liver, pancreas, thymus, lung, gut and genital tract. HNF1B can be a homodimer or a heterodimer with HNF1A. It's a transcription factor, probably by binding to the inverted palindrome 5'-GTTAATNATTAAC-3', and as a bookmarking factor that marks target genes for rapid transcriptional reactivation after mitosis. This is a rabbit polyclonal antibody raised against part chain of N-terminus of human HNF1B. HNF1B exists some isoforms with MV 61 kDa, 58 kDa, 46 kDa and 44 kDa.

## Publications notables

Autrice	Pubmed ID	Journal	Application
Yiannis Drosos	28894253	Sci Rep	IHC
Jianqing Wang	31636385	Oncogene	WB,IHC
Wei Lu	33174391	J Cell Mol Med	WB,IHC

## Stockage

### Stockage:

Stocker à -20°C. Stable pendant un an après l'expédition.

### Tampon de stockage:

PBS avec azoture de sodium à 0,02 % et glycérol à 50 % pH 7,3

L'aliquotage n'est pas nécessaire pour le stockage à -20C

\*\*\* Les 20ul contiennent 0,1% de BSA.

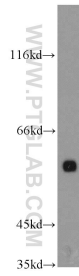
For technical support and original validation data for this product please contact:

T: 1 (888) 4PTGLAB (1-888-478-4522) (toll free in USA), or 1(312) 455-8498 (outside USA)

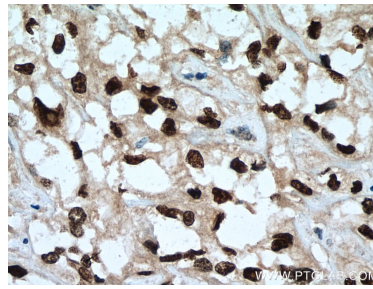
E: proteintech@ptglab.com  
W: ptglab.com

This product is exclusively available under Proteintech Group brand and is not available to purchase from any other manufacturer.

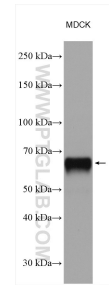
## Données de validation sélectionnées



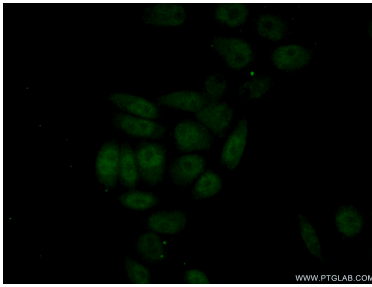
L02 cells were subjected to SDS PAGE followed by western blot with 12533-1-AP (HNF1B antibody) at dilution of 1:800 incubated at room temperature for 1.5 hours.



Immunohistochemical analysis of paraffin-embedded human renal cell carcinoma tissue slide using 12533-1-AP (HNF1B antibody) at dilution of 1:400 (under 40x lens). Heat mediated antigen retrieval with Tris-EDTA buffer (pH 9.0).



MDCK cells were subjected to SDS PAGE followed by western blot with 12533-1-AP (HNF1B antibody) at dilution of 1:800 incubated at room temperature for 1.5 hours.



Immunofluorescent analysis of (4% PFA) fixed L02 cells using 12533-1-AP (HNF1B antibody) at dilution of 1:50 and Alexa Fluor 488-conjugated AffiniPure Goat Anti-Rabbit IgG(H+L).