

À des fins de recherche uniquement

Anticorps Polyclonal de lapin anti-PSMD6



Numéro de catalogue: 12539-1-AP

Informations de base

| | | |
|--|--|--|
| Numéro de catalogue: 12539-1-AP | Numéro d'acquisition GenBank: BC012369 | Méthode de purification: Purification par affinité contre l'antigène |
| Taille: 150ul , Concentration: 800 µg/ml by Nanodrop and 333 µg/ml by Bradford method using BSA as the standard; | Identification du gène (NCBI): 9861 | Dilutions recommandées: WB 1:1000-1:6000 IP 0.5-4.0 ug for IP and 1:500-1:1000 for WB IHC 1:50-1:500 |
| Hôte: Lapin | Nom complet: proteasome (prosome, macropain) 26S subunit, non-ATPase, 6 | |
| Isotype: IgG | MW calculé 389 aa, 46 kDa | |
| Immunogen Catalog Number: AG3251 | MW observés: 46 kDa | |

Applications

| | |
|--|--|
| Applications testées: IHC, IP, WB, ELISA | Contrôles positifs: WB : cellules HEK-293, cellules HeLa, cellules Jurkat IP : cellules K-562, IHC : tissu testiculaire de souris, tissu cérébral de souris, tissu rénal de souris |
| Spécificité de l'espèce: Humain, rat, souris | |
| Remarque-IHC: <i>il est suggéré de démasquer l'antigène avec un tampon de TE buffer pH 9.0; (*) À défaut, 'le démasquage de l'antigène peut être 'effectué avec un tampon citrate pH 6,0.</i> | |

Informations générales

The 26 S proteasome is a 2.5-MDa molecular machine that degrades ubiquitinated proteins in eukaryotic cells. It consists of a proteolytic core particle and two 19 S regulatory particles (RPs) composed of 6 ATPase (RPT) and 13 non-ATPase (RPN) subunits. PSMD6 gene encodes 26S proteasome regulatory subunit RPN7, the characteristic of this protein is not well known to date.

Stockage

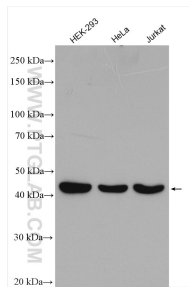
Stockage:
Stocker à -20°C. Stable pendant un an après l'expédition.
Tampon de stockage:
PBS avec azoture de sodium à 0,02 % et glycérol à 50 % pH 7,3
L'aliquotage n'est pas nécessaire pour le stockage à -20C

*** Les 20ul contiennent 0,1% de BSA.

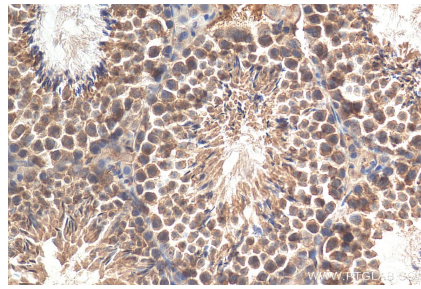
For technical support and original validation data for this product please contact:
T: 1 (888) 4PTGLAB (1-888-478-4522) (toll free in USA), or 1(312) 455-8498 (outside USA)
E: proteintech@ptglab.com
W: ptglab.com

This product is exclusively available under Proteintech Group brand and is not available to purchase from any other manufacturer.

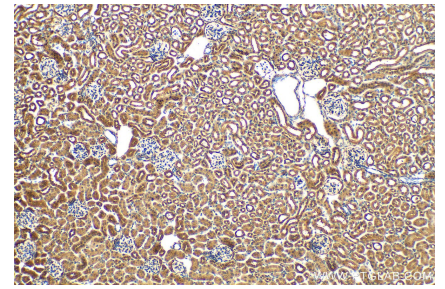
Données de validation sélectionnées



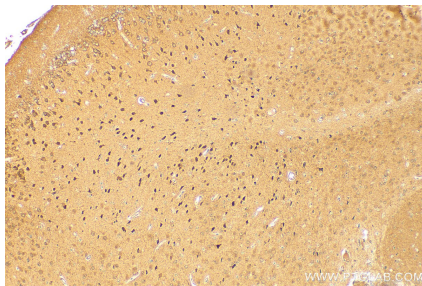
Various lysates were subjected to SDS PAGE followed by western blot with 12539-1-AP (PSMD6 antibody) at dilution of 1:3000 incubated at room temperature for 1.5 hours.



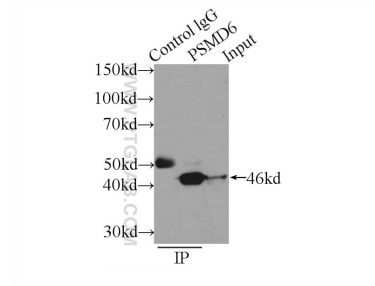
Immunohistochemical analysis of paraffin-embedded mouse testis tissue slide using 12539-1-AP (PSMD6 antibody) at dilution of 1:200 (under 40x lens). Heat mediated antigen retrieval with Tris-EDTA buffer (pH 9.0).



Immunohistochemical analysis of paraffin-embedded mouse kidney tissue slide using 12539-1-AP (PSMD6 antibody) at dilution of 1:200 (under 10x lens). Heat mediated antigen retrieval with Tris-EDTA buffer (pH 9.0).



Immunohistochemical analysis of paraffin-embedded mouse brain tissue slide using 12539-1-AP (PSMD6 antibody) at dilution of 1:200 (under 10x lens). Heat mediated antigen retrieval with Tris-EDTA buffer (pH 9.0).



IP Result of anti-PSMD6 (IP:12539-1-AP, 3ug; Detection:12539-1-AP 1:500) with K-562 cells lysate 1500ug.