

À des fins de recherche uniquement

# Anticorps Polyclonal de lapin anti-Annexin VI



Numéro de catalogue: 12542-1-AP

9 Publications

## Informations de base

Numéro de catalogue:  
12542-1-AP

Taille:  
150ul, Concentration: 500 µg/ml by Nanodrop and 180 µg/ml by Bradford method using BSA as the standard;

Hôte:  
Lapin

Isotype:  
IgG

Immunogen Catalog Number:  
AG3263

Numéro d'acquisition GenBank:  
BC017046

Identification du gène (NCBI):  
309

Nom complet:  
annexin A6

MW calculé:  
673 aa, 76 kDa

MW observés:  
67 kDa

Méthode de purification:  
Purification par affinité contre l'antigène

Dilutions recommandées:  
WB 1:500-1:2000  
IP 0.5-4.0 ug for IP and 1:500-1:1000 for WB  
IHC 1:50-1:500  
IF 1:50-1:500

## Applications

Applications testées:  
IF, IHC, IP, WB, ELISA

Demandes citées:  
IF, IHC, IP, WB

Spécificité de l'espèce:  
Humain, rat, souris

Espèces citées:  
Humain, rat, souris

**Remarque-IHC: il est suggéré de démasquer l'antigène avec un tampon de TE buffer pH 9.0; (\*) A défaut, 'le démasquage de l'antigène peut être 'effectué avec un tampon citrate pH 6,0.**

Contrôles positifs:

WB : cellules HeLa, cellules A549, cellules Jurkat, tissu cérébral de souris, tissu cérébral humain, tissu placentaire de souris, tissu rénal de souris

IP : tissu rénal de souris,

IHC : tissu de côlon humain, tissu rénal humain, tissu testiculaire humain

IF : cellules HeLa,

## Informations générales

ANXA6, also called CBP68, or 67 kDa calelectrin, belongs to a family of calcium-dependent membrane and phospholipid binding proteins. Several members of the annexin family have been implicated in membrane-related events along exocytotic and endocytotic pathways. The annexin VI gene is approximately 60 kbp long and contains 26 exons. It encodes a protein of about 68 kDa that consists of eight 68-amino acid repeats separated by linking sequences of variable lengths. It is highly similar to human annexins I and II sequences, each of which contain four such repeats. Annexin VI has been implicated in mediating the endosome aggregation and vesicle fusion in secreting epithelia during exocytosis.

## Publications notables

Autrice	Pubmed ID	Journal	Application
Bing Wang	29158682	Onco Targets Ther	WB
Yin Cao	30901224	J Proteome Res	WB, IHC
Hao Zhang	35372351	Front Cell Dev Biol	WB

## Stockage

Stockage:

Stocker à -20°C. Stable pendant un an après l'expédition.

Tampon de stockage:

PBS avec azoture de sodium à 0,02 % et glycérol à 50 % pH 7,3

L'aliquotage n'est pas nécessaire pour le stockage à -20C

\*\*\* Les 20ul contiennent 0,1% de BSA.

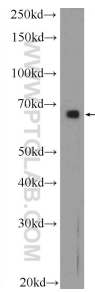
For technical support and original validation data for this product please contact:

T: 1 (888) 4PTGLAB (1-888-478-4522) (toll free in USA), or 1(312) 455-8498 (outside USA)

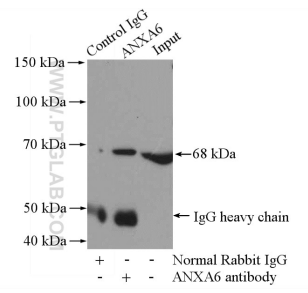
E: proteintech@ptglab.com  
W: ptglab.com

This product is exclusively available under Proteintech Group brand and is not available to purchase from any other manufacturer.

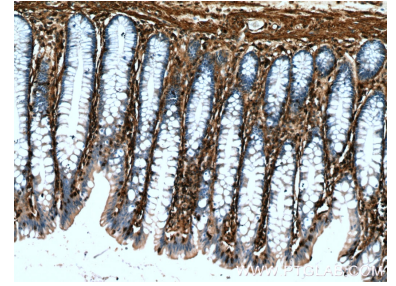
## Données de validation sélectionnées



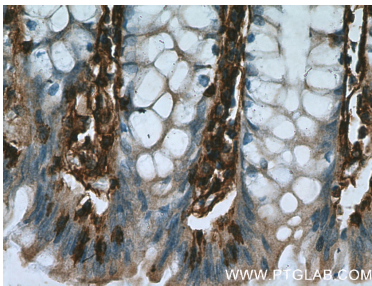
HeLa cells were subjected to SDS PAGE followed by western blot with 12542-1-AP (Annexin VI antibody at dilution of 1:1000 incubated at room temperature for 1.5 hours.



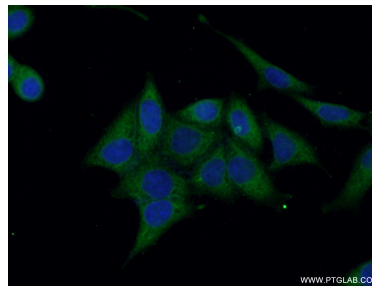
IP Result of anti-Annexin VI (IP:12542-1-AP, 4ug; Detection:12542-1-AP 1:500) with mouse kidney tissue lysate 4000ug.



Immunohistochemical analysis of paraffin-embedded human colon tissue slide using 12542-1-AP (Annexin VI antibody at dilution of 1:200 (under 10x lens).



Immunohistochemical analysis of paraffin-embedded human colon tissue slide using 12542-1-AP (Annexin VI antibody at dilution of 1:200 (under 40x lens).



Immunofluorescent analysis of (-20°C Ethanol) fixed HeLa cells using 12542-1-AP (Annexin VI antibody) at dilution of 1:50 and Alexa Fluor 488-conjugated AffiniPure Goat Anti-Rabbit IgG(H+L).