

À des fins de recherche uniquement

Anticorps Polyclonal de lapin anti-TRIM31



Numéro de catalogue: 12543-1-AP

Phare

13 Publications

Informations de base

Numéro de catalogue:
12543-1-AP

Taille:
150ul, Concentration: 500 µg/ml by Nanodrop and 300 µg/ml by Bradford method using BSA as the standard;

Hôte:
Lapin

Isotype:
IgG

Immunogen Catalog Number:
AG3264

Numéro d'acquisition GenBank:
BC017017

Identification du gène (NCBI):
11074

Nom complet:
tripartite motif-containing 31

MW calculé
425 aa, 48 kDa

MW observés:
48 kDa

Méthode de purification:
Purification par affinité contre l'antigène

Dilutions recommandées:
WB 1:500-1:1000
IP 0.5-4.0 ug for IP and 1:200-1:1000 for WB
IHC 1:2000-1:8000

Applications

Applications testées:
IHC, IP, WB, ELISA

Demandes citées:
IF, IHC, IP, WB

Spécificité de l'espèce:
Humain

Espèces citées:
Humain, rat, souris

Remarque-IHC: il est suggéré de démasquer l'antigène avec un tampon de TE buffer pH 9,0; (*) A défaut, le démasquage de l'antigène peut être effectué avec un tampon citrate pH 6,0.

Contrôles positifs:

WB: cellules COLO 320,

IP: cellules COLO 320,

IHC: tissu cardiaque de souris, tissu d'intestin grêle humain

Informations générales

TRIM31 (Tripartite motif-containing protein 31) is also named as C6orf13, RNF and belongs to the TRIM/RBCC family. The deduced protein contains an N-terminal RING domain, a B-box-2 domain, and a coiled-coil region. TRIM31 forms homodimers (PMID:11331580). This protein has 2 isoforms produced by alternative splicing.

Publications notables

Autrice	Pubmed ID	Journal	Application
Wei Zhao	32929041	J Immunol	WB
Yafei Guo	34650049	Cell Death Dis	WB, IHC
Eun A Ra	27216961	Nat Commun	WB

Stockage

Stockage:

Stocker à -20°C. Stable pendant un an après l'expédition.

Tampon de stockage:

PBS avec azoture de sodium à 0,02 % et glycérol à 50 % pH 7,3

L'aliquotage n'est pas nécessaire pour le stockage à -20C

*** Les 20ul contiennent 0,1% de BSA.

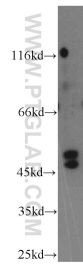
For technical support and original validation data for this product please contact:

T: 1 (888) 4PTGLAB (1-888-478-4522) (toll free in USA), or 1(312) 455-8498 (outside USA)

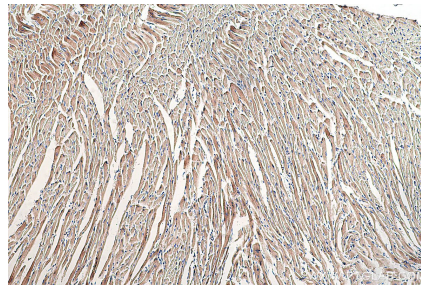
E: proteintech@ptglab.com
W: ptglab.com

This product is exclusively available under Proteintech Group brand and is not available to purchase from any other manufacturer.

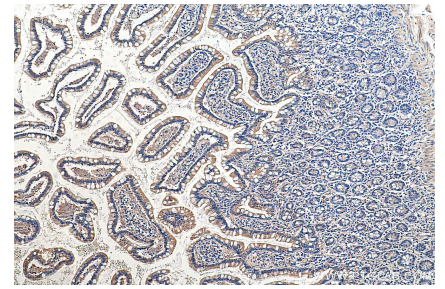
Données de validation sélectionnées



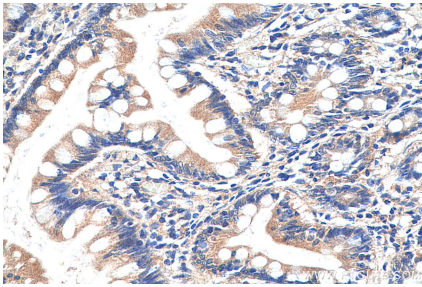
COLO 320 cells were subjected to SDS PAGE followed by western blot with 12543-1-AP (TRIM31 antibody) at dilution of 1:400 incubated at room temperature for 1.5 hours.



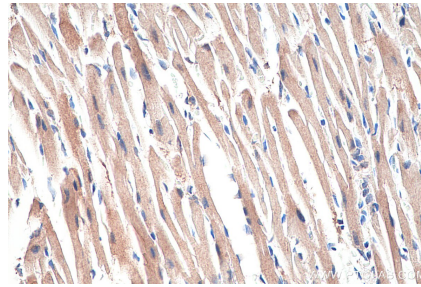
Immunohistochemical analysis of paraffin-embedded mouse heart tissue slide using 12543-1-AP (TRIM31 antibody) at dilution of 1:4000 (under 10x lens). Heat mediated antigen retrieval with Tris-EDTA buffer (pH 9.0).



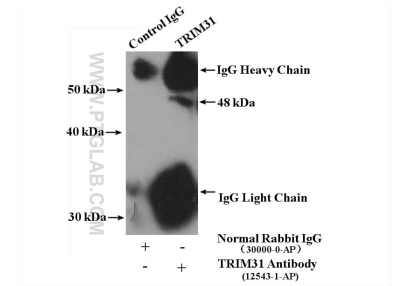
Immunohistochemical analysis of paraffin-embedded human small intestine tissue slide using 12543-1-AP (TRIM31 antibody) at dilution of 1:1000 (under 10x lens). Heat mediated antigen retrieval with Tris-EDTA buffer (pH 9.0).



Immunohistochemical analysis of paraffin-embedded human small intestine tissue slide using 12543-1-AP (TRIM31 antibody) at dilution of 1:1000 (under 40x lens). Heat mediated antigen retrieval with Tris-EDTA buffer (pH 9.0).



Immunohistochemical analysis of paraffin-embedded mouse heart tissue slide using 12543-1-AP (TRIM31 antibody) at dilution of 1:4000 (under 40x lens). Heat mediated antigen retrieval with Tris-EDTA buffer (pH 9.0).



IP Result of anti-TRIM31 (IP:12543-1-AP, 4ug; Detection:12543-1-AP 1:400) with COLO 320 cells lysate 3200ug.